



OPEN ACCESS

Cohort study of electronic cigarette use: effectiveness and safety at 24 months

Lamberto Manzoli,^{1,2,3,4} Maria Elena Flacco,^{1,2} Margherita Ferrante,⁵ Carlo La Vecchia,⁶ Roberta Siliquini,⁷ Walter Ricciardi,^{8,9} Carolina Marzuillo,¹⁰ Paolo Villari,¹⁰ Maria Fiore,⁵ the ISLESE Working Group

► Additional material is published online only. To view please visit the journal online (<http://dx.doi.org/10.1136/tobaccocontrol-2015-052822>).

For numbered affiliations see end of article.

Correspondence to

Dr Lamberto Manzoli, Palazzina di Odontoiatria, University of Chieti, Via dei Vestini 5, Chieti 66100, Italy; lmanzoli@post.harvard.edu

LM and MEF equally contributed to the present study.

Received 11 November 2015
Accepted 19 April 2016
Published Online First
6 June 2016

ABSTRACT

Objective To evaluate the safety and effectiveness of e-cigarettes, by comparing users of only e-cigarettes, smokers of only tobacco cigarettes and dual users.

Design Prospective cohort study. We update previous 12-month findings and report the results of the 24-month follow-up.

Data sources Direct contact and questionnaires by phone or via internet.

Methods Adults (30–75 years) were classified as: (1) tobacco smokers, if they smoked ≥ 1 tobacco cigarette/day, (2) e-cigarette users, if they inhaled ≥ 50 puffs/week of any type of e-cigarette and (3) dual users, if they smoked tobacco cigarettes and also used e-cigarettes. Carbon monoxide levels were tested in 50% of those declaring tobacco smoking abstinence. Hospital discharge data were used to validate possibly related serious adverse events in 46.0% of the sample.

Main outcome measures Sustained abstinence from tobacco cigarettes and/or e-cigarettes after 24 months, the difference in the number of tobacco cigarettes smoked daily between baseline and 24 months, possibly related serious adverse events.

Results Data at 24 months were available for 229 e-cigarette users, 480 tobacco smokers and 223 dual users (overall response rate 68.8%). Of the e-cigarette users, 61.1% remained abstinent from tobacco (while 23.1% and 26.0% of tobacco-only smokers and dual users achieved tobacco abstinence). The rate (18.8%) of stopping use of either product (tobacco and/or e-cigarettes) was not higher for e-cigarette users compared with tobacco smokers or dual users. Self-rated health and adverse events were similar between all groups. Among those continuing to smoke, there were no differences in the proportion of participants reducing tobacco cigarette consumption by 50% or more, the average daily number of cigarettes and the average self-rated health by baseline group. Most dual users at baseline abandoned e-cigarettes and continued to smoke tobacco. Those who continued dual using or converted from tobacco smoking to dual use during follow-up experienced significant improvements in the 3 outcomes compared with those who continued or switched to only smoking tobacco ($p < 0.001$).

Conclusions E-cigarette use alone might support tobacco quitters remaining abstinent from smoking. However, dual use did not improve the likelihood of quitting tobacco or e-cigarette use, but may be helpful to reduce tobacco consumption. Adverse event data were scarce and must be considered preliminary.

Trial registration number NCT01785537.

INTRODUCTION

Despite their potential public health relevance, the current evidence on the safety and efficacy/effectiveness of e-cigarettes is scarce, and long-term data are urgently needed.^{1–7} The published prospective evidence on the efficacy/effectiveness for healthy participants consists of 2 randomised trials,^{8 9} 2 single-arm small trials^{10–12} and 11 observational studies.^{13–23} However, these studies mostly included users of both tobacco and e-cigarettes followed for ≤ 12 months, used various assessment methods, and did not directly compare e-cigarette users and tobacco smokers.^{4 6 7 24 25} Moreover, the entire evidence on e-cigarette safety—at 6 months—is limited to 122 healthy participants, most of whom were also smoking tobacco for most of the follow-up.^{8 9 11} We previously reported the 12-month follow-up results²⁶ of our 5-year study aimed at evaluating the long-term effects of e-cigarette use.²⁷ We report the results of the 24-month follow-up, and include hospital discharge data.

METHODS

The protocol and 12-month results of this prospective cohort study are reported elsewhere,^{26 27} and registered in Clinicaltrials.gov (NCT01785537). In brief, we recruited adults (30–75 years) who were: (1) tobacco smokers of ≥ 1 tobacco cigarette daily for ≥ 6 months; (2) e-cigarette users of any type of e-cigarette for ≥ 6 months (3) dual users of tobacco and e-cigarettes for ≥ 6 months, via general practitioners, e-cigarette shops, internet advertisements and social networks.

Data were collected through a structured questionnaire, administered through phone interview and/or by internet, and follow-up will continue up to 60 months. Two investigators (MEF and LM) tested carbon monoxide levels in expired breath (Smokerlyzer piCO+, Bedfont Scientific) in a random sample of those declaring tobacco smoking abstinence (25% and 50% at 12 and 24 months, respectively).

The work was approved by Chieti University Ethics Committee; all participants provided written informed consent.

Outcome variables and data analysis

The primary outcome was the percentage of sustained (30 days) abstinence from tobacco smoking at 24 months. Other outcomes were the proportion of participants abstinent from both tobacco smoking and e-cigarette use, the number of tobacco



CrossMark

To cite: Manzoli L, Flacco ME, Ferrante M, et al. *Tob Control* 2017;**26**:284–292.

cigarettes smoked per day (and the proportion of participants reducing tobacco cigarette consumption by 50% or more between baseline and 24 months), self-reported health (assessed through the final item of the Italian version of the EuroQol EQ-D5L²⁸) and possibly related serious adverse events. Adverse events were both self-reported and gathered from data obtained from the regional hospital discharge administrative database (Italian Scheda di Dimissione Ospedaliera) for the residents in the Abruzzo Region (46.0% of the sample); and only self-reported for the rest of the sample. The details of the International Classification of Diseases, Ninth Revision, Clinical Modification (ICD-9-CM) codes used to extract adverse events are reported in the protocol²⁷ and in the online supplementary material.

The differences by baseline cigarette use were evaluated using Kruskal-Wallis or one-way analysis of variance with Sidak correction for continuous variables, and χ^2 test for categorical variables. For the latter, when more than two categories were compared (such as for cigarette use), separate comparisons were made for one group versus the others, and different p values were computed. The difference in continuous variables (ie, number of cigarettes smoked per day) within groups between baseline and end of follow-up was evaluated through Wilcoxon matched-pairs signed-rank test.

Multivariable random-effect linear and logistic regressions, with geographical region as the cluster unit, were used to investigate potential predictors of continuous and categorical outcomes, respectively. We set eight multivariable models for the following outcomes: (A) tobacco smoking abstinence at 24 months; (B) abstinence from both tobacco smoking and e-cigarette use at 24 months; (C) possibly related serious adverse events at 24 months; (D) reduction by $\geq 50\%$ of tobacco cigarette consumption from baseline to 24 months, by baseline cigarette use group (this model was fitted into two versions: the first included the whole sample of tobacco and dual users at baseline; the second included only the subsample of continuing smokers, excluding those who had quit and whose cigarette consumption was zero at follow-up); (E) reduction by $\geq 50\%$ of tobacco cigarette consumption from baseline to 24 months, by 24-month cigarette use group (as most dual users switched to another group, this model and model G were needed to further investigate the potential predictors of tobacco smoking reduction among the switchers); (F) difference in the daily number of tobacco cigarettes smoked per day at 24 months compared with baseline, by baseline cigarette use group (this model was fitted into two versions: the first included the whole sample of tobacco and dual users at baseline; the second included only the subsample of continuing smokers, excluding those who had quit and whose cigarette consumption was zero at follow-up); (G) difference in the daily number of tobacco cigarettes smoked per day at 24 months compared with baseline, by 24-month cigarette use group and (H) difference in the self-rated health at 24 months compared with baseline. The users of e-cigarettes only at baseline were excluded from models D, E, F and G.

With the exceptions of models C, E and G, which included a limited number of successes and had to be fitted with a restricted set of covariates, for all other models the number of successes of categorical outcomes (excluding adverse events) approximated 10 successes for each recorded variable (thus avoiding overfitting requirements).²⁹ It was thus decided a priori to include all recorded variables into all final models regardless of significance, unless inclusion would create multicollinearity or violate other assumptions. Each covariate was tested in its

original form or transformed if needed: only the number of cigarettes smoked per day was transformed into its square root; because the results were similar to those with the covariate included in its untransformed version, it was thus kept in the model in its original form. Models A, B, D, F and H were adjusted for the following baseline characteristics: age, gender, body mass index, marital status, educational level, occupation, alcohol use, hypertension, hypercholesterolaemia, diabetes, self-rated health and years of tobacco smoking (former smoking for e-cigarette-only users). We excluded physical activity from the final multivariate models due to substantial missing data ($n=41$) and its virtually null effect on any dependent variables. The number of tobacco cigarettes smoked per day was transformed to be included into models A, B, C and H: because no tobacco cigarettes were smoked at baseline by e-cigarette-only users, we recategorised the amount of smoking, using tertiles. Those smoking <10 tobacco cigarettes per day (or <50 puffs per day if e-cigarette-only smokers) at baseline were assigned to the lowest tertile of consumption; smokers of 10–19 tobacco cigarettes (or 50–100 puffs if e-cigarette-only users) per day at baseline were assigned to the intermediate tertile; smokers of 20 or more cigarettes (or 100 or more puffs if e-cigarette-only users) per day at baseline were classified into the highest tertile.

Potential interactions with the dependent variable and/or quadratic/cubic terms were investigated for all covariates. In logistic regression analyses, the outlier analysis was based on Pearson calculation and standardised residuals, the change in Pearson χ^2 , and Dbeta influence statistics and leverage (hat diagonal matrix). The validity of the final linear regression models was assessed as follows. The assumption of constant error variance was checked graphically, plotting Pearson residuals versus fitted values, and formally, using the Cook-Weisberg test for heteroscedasticity. High leverage observations were identified by computing Pearson, standardised and studentised residuals, Cook's D influence, Welsch distance and the hat diagonal matrix (LC Hamilton. Statistics with Stata: Version 12, Eighth Edition. Boston: Cengage 2013). We found <30 influential or high-leverage observations in all models. In all cases, we repeated the analyses excluding these observations, with no substantial changes, and we thus kept all observations in the models.

We had very few missing data for all outcome variables (<5) except self-rated health, which was not answered by 56 participants at baseline (but only 30 of them were kept in the 24-month assessment), and by 3 participants at the 24-month follow-up. Models A, B, C and H were rerun without self-rated health at baseline (-30 participants), with no appreciable variation, therefore it was retained. Model H was inevitably fitted with 33 missing observations. Given that the participants lost in model H were relatively few (3.5% of the sample) and balanced across baseline groups, no missing data imputation technique was adopted. Finally, the distribution of the difference in self-rated health was relatively skewed (Shapiro-Wilk $p<0.01$) and model G was set also using its cubic form. However, again the estimates of p values of cigarette use covariates were similar and the dependent variable was maintained in its original form to facilitate results interpretation.

The results of the logistic regression analyses are presented as ORs and the corresponding 95% CIs whereas the results of the linear regression analyses are presented as β -coefficients and 95% CIs. A two-tailed p value of 0.05 was considered significant for all analyses, which were performed using Stata V.13.1 (Stata Corp, College Station, Texas, USA, 2014).

RESULTS

The flow of the participants is shown in figure 1 and baseline characteristics are reported in online supplementary table S1. After 24 months, 61.1% of the 229 baseline e-cigarette-only users were still abstinent from tobacco smoking; 23.1% of the 480 baseline tobacco smokers and 26.0% of the 223 baseline dual users achieved tobacco abstinence ($p<0.001$ for e-cigarette-only users vs tobacco smokers or dual users; table 1). The proportion of participants who achieved complete abstinence (who were using neither tobacco cigarettes nor e-cigarettes) did not significantly differ by baseline use group: 18.8%, 17.5% and 14.3% among e-cigarette users, tobacco smokers and dual users, respectively (all $p>0.05$).

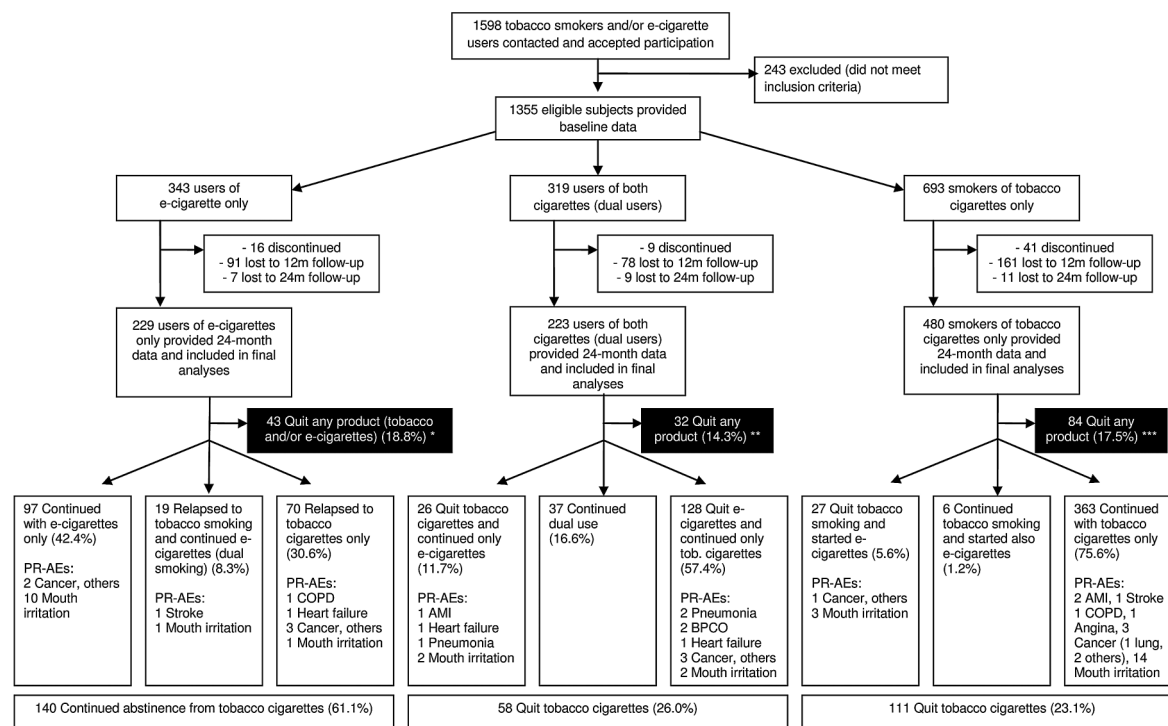
The proportion of participants reducing tobacco cigarette consumption by 50% or more, or by ≥ 5 tobacco cigarettes per day, and the average daily number of cigarettes, did not change by baseline group (table 1; all $p>0.05$). Importantly, the majority (83.4%) of dual users at baseline abandoned e-cigarettes and continued to smoke only tobacco (57.4%), or quit tobacco (11.7%) or both tobacco cigarettes and e-cigarettes (14.3%) during follow-up (table 1). Therefore, a second analysis was conducted stratifying by baseline and 24-month cigarette use, in order to assess the variation of the pattern of consumption among the switchers as well. Among the 603 tobacco-only smokers or dual users at baseline, 21 of the 40 (52.5%) participants who started or continued dual use during the follow-up reduced tobacco cigarette consumption by $\geq 50\%$, while only 67 of the 489 (13.7%) participants who started or continued only tobacco smoking showed a $\geq 50\%$ cigarette reduction ($p<0.001$, table 1).

No significant differences in average self-rated health were noted by baseline group (all $p>0.05$). A substantial improvement, however, was observed for tobacco smokers or dual users

who switched to e-cigarettes only (+1.1 or 1.0 in EuroQol mean score, respectively; $p<0.05$; table 1).

We recorded an identical number of mouth irritations ($n=38$) and possibly related serious adverse events ($n=38$; table 1). Potential adverse events were reported by 4.4%, 2.9% and 6.3% of baseline e-cigarette users, tobacco smokers and dual users, respectively ($p<0.05$ for the comparison of tobacco smokers vs dual users). Mouth irritation rates were 6.1%, 4.2% and 1.8% in the above groups ($p<0.05$ for the comparison of e-cigarette users vs dual users). The distribution of adverse events by baseline and 24-month group is reported in figure 1. The characteristics of the participants reporting a serious adverse event, and its type, are reported in online supplementary table S2. Also, the cigarette use throughout the follow-up of the 38 participants experiencing a possibly related serious adverse event is shown in online supplementary figure S1. Notably, most tobacco-only smokers at baseline, who experienced an adverse event, remained tobacco-only smokers or quit both tobacco smoking and e-cigarette use. In contrast, most of the e-cigarette-only and dual users at baseline who experienced a serious adverse event ($n=24$), switched group during the 24-month follow-up: 13 switched to tobacco smoking only, and 5 quit both tobacco cigarettes and e-cigarettes.

Multivariate analyses substantially confirmed univariate results (table 2): when several potential confounders were adjusted for, tobacco smoking abstinence remained significantly more likely among e-cigarette users (adjusted OR 5.56; 95% CI 3.89 to 7.95; $p<0.001$); the likelihood of abstinence from tobacco smoking and e-cigarette use, as well as self-reported health, did not significantly vary by baseline group ($p>0.05$); the probability of halving or reducing the average number of daily tobacco cigarettes smoked did not change by baseline group, but tobacco smokers who started dual use or dual users



PR-AEs: Possibly related adverse events. AMI = Acute Myocardial infarction. COPD = Chronic obstructive pulmonary diseases. * Among the 43 baseline users of e-cigarette only that quit all cigarettes, the following PR-AEs were observed: 1 AMI, 1 Cancer, others, 2 Mouth irritation. ** Among the 32 baseline dual users who quit all cigarettes, the following PR-AEs were observed: 1 COPD, 1 AMI, 1 Angina. *** Among the 84 baseline tobacco smokers only that quit all cigarettes, the following PR-AEs were observed: 2 COPD, 1 Pneumonia, 1 Stroke, 1 Hematological cancer, 3 Mouth irritation.

Figure 1 Flow of the participants, number of quitters and possibly related serious adverse events.

Table 1 Main outcomes at 24 months

	Cigarette use at baseline					
	E-cigarettes only (n=229)	Tobacco cigarettes only (n=480)	Dual use (n=223)	p Value ^A	p Value ^B	p Value ^C
1. Cigarette use at 24 months						
Tobacco cigarettes only, per cent (n)						
Continuous tobacco abstinence from baseline or cessation from tobacco smoking during follow-up*	61.1 (140)	23.1 (111)	26.0 (58)	<0.001	0.4	<0.001
Tobacco smoking (continued or relapsed)	38.9 (89)	76.9 (369)	74.0 (165)	<0.001	0.4	<0.001
All product use (cigarettes and/or e-cigarettes), per cent (n)						
Quit using any product (either tobacco and/or e-cigarette)	18.8 (43)	17.5 (84)	14.3 (32)	0.7	0.3	0.20
Using e-cigarettes only	42.4 (97)	5.6 (27)	11.7 (26)	<0.001	0.004	<0.001
Dual use (tobacco cigarettes and e-cigarettes)	8.3 (19)	1.3 (6)	16.6 (37)	<0.001	<0.001	0.007
Smoking tobacco cigarettes only	30.6 (70)	75.6 (363)	57.4 (128)	<0.001	<0.001	<0.001
2. Number of tobacco cigarettes						
Mean number of tobacco cigarettes daily at 24 months (SD)						
Stratified by baseline group	—	10.0 (8.4)	11.2 (9.8)	—	0.09	—
Stratified by cigarette use at 24 months						
Started or continued tobacco cigarettes only	0.0 (0.0)	14.8 (8.1)	15.8 (9.1)	—	0.2	—
Started or continued dual use only	0.0 (0.0)	19.0 (6.3)	14.0 (9.5)	—	0.2	—
		(p=0.2)†	(p=0.3)‡			
Percentage of participants reducing tobacco cigarettes of 50% or more from baseline to 24 months						
Stratified by baseline group	—	34.5	39.7	—	0.2	—
Stratified by product use at 24 months						
Started or continued tobacco cigarettes only	—	14.1 (n=51)	9.4 (n=12)	—	0.2	—
Started or continued dual use only	—	66.7 (n=4)	50.0 (n=17)	—	0.5	—
		(p<0.001)†	(p<0.001)‡			
Percentage of participants who smoked ≥5 tobacco cigarettes less between baseline and 24 months						
Stratified by baseline group	—	38.6	42.5	—	0.3	—
Stratified by product use at 24 months						
Started or continued tobacco cigarettes only	—	23.5 (n=85)	22.1 (n=28)	—	0.7	—
Started or continued dual use only	—	66.7 (n=4)	55.9 (n=19)	—	0.6	—
Mean difference in the daily number of tobacco cigarettes between 24 months and baseline (SD)						
Stratified by baseline group	—	−4.1 (8.1)	−4.0 (11.8)	—	0.9	—
Stratified by product use at 24 months						
Started or continued tobacco cigarettes only	—	−1.6 (6.4)	−0.8 (9.6)	—	0.2	—
Started or continued dual use only	—	−5.3 (3.3)	−6.5 (10.7)	—	0.8	—
		(p=0.2)†	(p=0.003)‡			
3. Self-rated health—Mean difference between 24 months and baseline (SD)						
Stratified by baseline group	0.0 (1.7)	0.0 (1.4)	−0.1 (1.7)	0.9	0.4	0.5
Stratified by product use at 24 months						
Quit using any product (either tobacco and/or e-cigarette)	+0.2 (1.6)	+0.3 (1.4)	−0.2 (2.1)	0.7	0.14	0.4
Using e-cigarettes only	+0.3 (1.4)	+1.1 (1.7)	+1.0 (1.6)	0.014	0.8	0.03
Dual use (tobacco cigarettes and e-cigarettes)	−0.3 (1.7)	+0.3 (1.5)	+0.2 (1.7)	0.4	0.9	0.3
Smoking tobacco cigarettes only	−0.5 (1.9)	−0.1 (1.4)	−0.4 (1.4)	0.041	0.039	0.7
4. Safety—possibly related sAEs, per cent (n)						
Stratified by baseline group						
Mouth irritation	6.1 (14)	4.2 (20)	1.8 (4)	0.27	0.10	0.019

Continued

Table 1 Continued

p Value ^A	Cigarette use at baseline		
	E-cigarettes only (n=229) p Value ^B	Tobacco cigarettes only (n=480) p Value ^C	Dual use (n=223)
Any SAE [†]	4.4 (10)	2.9 (14)	6.3 (14)
Any cancer	2.6 (6)	1.0 (5)	1.4 (3)
Any SAE [†] stratified by product use at 24 months, per cent (n)			
Quit using any product (either tobacco and/or e-cigarette)	4.6 (2)	6.0 (5)	9.4 (3)
Using e-cigarettes only	2.1 (2)	3.7 (1)	11.5 (3)
Dual use (tobacco cigarette and e-cigarettes)	5.3 (1)	0.0	0.0 (0)
Smoking tobacco cigarettes only	7.1 (5)	2.2 (8)	6.3 (8)
p Value for the comparisons of the following groups at baseline: ^A tobacco cigarettes only versus e-cigarettes only; ^B tobacco cigarettes only versus dual use; ^C e-cigarettes only versus dual use.			
*Including (1) users of e-cigarettes only at baseline who quit e-cigarette use and did not start tobacco smoking; (2) smokers of tobacco cigarettes only at baseline who quit tobacco cigarette use and did not start e-cigarette use; (3) dual users at baseline who quit both tobacco smoking and e-cigarette use; (4) e-cigarette users at baseline who continued to use only e-cigarettes; (5) tobacco cigarette smokers at baseline who quit tobacco smoking and started using e-cigarettes; (6) dual users at baseline who quit tobacco smoking and continued to use e-cigarettes only.			
[†] p Value for the comparison of the tobacco-only smokers at baseline who started or continued tobacco cigarettes only versus tobacco-only smokers at baseline who started or continued dual use only.			
[‡] p Value for the comparison of the dual users at baseline who started or continued tobacco cigarettes only versus dual users at baseline who started or continued dual use only.			
[§] EuroQol final item, ranging from 1 (feel very bad) to 10 (perfectly healthy).			
Mouth irritation excluded; chronic obstructive pulmonary diseases, stroke, heart failure, myocardial infarction, angina, pneumonia and any type of cancer included.			
SAE, serious adverse event.			

who continued dual using, were significantly more likely to halve their tobacco cigarette consumption and to decrease the average number of cigarettes per day than those who started or continued only smoking tobacco (all $p < 0.001$); dual users at baseline remained significantly more likely to report a serious adverse event than tobacco-only smokers (OR 2.40; 95% CI 1.09 to 5.26; $p = 0.029$).

Switching or quitting cigarette use

Overall, 435 participants switched ($n = 276$; 29.6%) or stopped ($n = 159$; 17.1%) using either product (tobacco cigarettes or e-cigarettes) during the follow-up (figure 1 and table 3). Very few tobacco cigarette smokers switched to dual use (5.6%) or to e-cigarettes only (1.3%). In contrast, only 16.6% of dual users remained dual users after 24 months, and most of them (57.4%) abandoned e-cigarettes and continued to smoke only tobacco cigarettes. Thirty-nine per cent of e-cigarette-only users switched to tobacco smoking, while 42.4% continued with e-cigarettes only or stopped using either tobacco cigarettes or e-cigarettes.

Of the 159 participants who quit using either product at 24 months, 91 had quit at the 12-month follow-up (57.2%). Of the 131 participants who quit using either product at 12 months, 6 were lost to follow-up, 91 remained abstinent and 34 relapsed (27.2%): 29 to tobacco smoking only, 4 to e-cigarettes only and 1 to dual use. Similar results were observed for quitting tobacco cigarettes (table 3).

Other secondary findings on CO levels, the other predictors of tobacco smoking, and abstinence from tobacco cigarettes and e-cigarettes, and adverse events, are reported in the online supplementary material.

DISCUSSION

To date, this is the only study to directly compare smokers of tobacco cigarettes only with users of e-cigarettes only, and to provide safety data on e-cigarette-only users for >12 months. With respect to the first year of follow-up, the analyses after the second year provided some important confirmations and some new insights.

This confirms that complete switching to e-cigarettes may help tobacco quitters remain abstinent from smoking: after 24 months the rate of relapse to tobacco smoking remained relatively low (38.9%), if compared with the 60–90% relapse rates of tobacco cigarette smokers observed in population-based studies.³⁰ It should be kept in mind that all e-cigarette users in our sample were former tobacco smokers at baseline, with a mean time of 8 months since switching to e-cigarettes. Notably, the analysis of those who had quit tobacco smoking at 12 months showed that the relapse rates to tobacco smoking at 24 months were also relatively low for tobacco-only smokers (30.3%; table 3). With regard to safety, the rate of adverse events was not lower in e-cigarette-only users than in tobacco smokers, which was expected in this phase of the study, given that the excess risk of tobacco smoking takes 1–5 years to substantially decrease.^{31 32}

The results also confirmed that the use of e-cigarettes in addition to tobacco smoking (dual use) does not seem to encourage tobacco smokers to quit tobacco. Further, dual users at baseline did not differ from tobacco-only smokers in tobacco cigarette consumption and self-rated health. However, the vast majority of dual users switched to another use status during the follow-up, which suggests that dual use is generally a transient phase rather than a long-term pattern of use. Further, the analyses stratified by baseline status may provide limited

Table 2 Tobacco smoking and/or e-cigarette use abstinence or cessation, possibly related adverse events, difference in daily tobacco cigarette consumption and self-reported health: results of the multivariate analyses

Outcomes at 24 months	Adjusted OR (95% CI)	p Value	Crude OR (95% CI)	p Value
Continuous tobacco abstinence from baseline or quit tobacco smoking during follow-up*,†				
Tobacco cigarettes only at baseline	1 (ref cat)	–	1 (ref cat)	–
E-cigarettes only at baseline	5.56 (3.89 to 7.95)	<0.001	5.23 (3.72 to 7.35)	<0.001
Both tobacco and e-cigarettes at baseline	1.25 (0.85 to 1.84)	0.2	1.17 (0.81 to 1.69)	0.4
Quit all cigarettes (electronic and/or traditional)*				
Tobacco cigarettes only at baseline	1 (ref cat)	–	1 (ref cat)	–
E-cigarettes only at baseline	1.12 (0.73 to 1.72)	0.6	1.09 (0.73 to 1.64)	0.7
Both tobacco and e-cigarettes at baseline	0.94 (0.59 to 1.49)	0.8	0.79 (0.51 to 1.23)	0.3
Safety—possibly related sAEs‡				
Tobacco cigarettes only at baseline	1 (ref cat)	–	1 (ref cat)	–
E-cigarettes only at baseline	1.48 (0.63 to 3.47)	0.4	1.52 (0.66 to 3.48)	0.3
Both tobacco and e-cigarettes at baseline	2.40 (1.09 to 5.26)	0.029	2.23 (1.04 to 4.76)	0.038
Reduction of tobacco cigarette consumption by 50% or more from baseline to 24 months§				
Tobacco cigarettes only at baseline	1 (ref cat)	–	1 (ref cat)	–
Both tobacco and e-cigarettes at baseline	1.28 (0.90 to 1.82)¶	0.2	1.25 (0.89 to 1.76)¶	0.2
	0.99 (0.57 to 1.71)**	0.9	1.25 (0.76 to 2.05)**	0.4
Reduction of tobacco cigarette consumption by 50% or more from baseline to 24 months††				
Tobacco or dual users at baseline who switched to or continued with tobacco smoking only	1 (ref cat)	–	1 (ref cat)	–
Tobacco or dual users at baseline who started or continued dual use	8.48 (4.05 to 17.8)	<0.001	7.47 (3.81 to 14.7)	<0.001
Adjusted coefficient (95% CI)		Raw coefficient (95% CI)		
Difference in the daily number of tobacco cigarettes from 24 months to baseline‡‡				
Tobacco cigarettes only at baseline	0 (ref cat)	–	0 (ref cat)	–
Both tobacco and e-cigarettes at baseline	0.44 (–0.88 to 1.75)¶	0.5	0.10 (–1.41 to 1.61)¶	0.9
	0.75 (–1.13 to 2.63)**	0.4	0.87 (–0.42 to 2.15)**	0.2
Difference in the daily number of tobacco cigarettes from 24 months to baseline§§				
Tobacco smokers who continued only smoking and dual users at baseline who switched to tobacco only smoking	0 (ref cat)	–	0 (ref cat)	–
Dual users at baseline who continued dual use and tobacco-only smokers who switched to dual use	–5.71 (–8.02 to –3.39)	<0.001	–5.32 (–7.80 to –2.85)	<0.001
Difference in the self-reported health score from 24 months to baseline¶¶				
Tobacco cigarettes only at baseline	0 (ref cat)	–	0 (ref cat)	–
E-cigarettes only at baseline	0.14 (–0.08 to 0.35)	0.2	–0.03 (–0.27 to 0.22)	0.8

Continued

Table 2 Continued

	Adjusted coefficient (95% CI)		Raw coefficient (95% CI)
Both tobacco cigarettes and e-cigarettes at baseline	−0.15 (−0.36 to 0.07)	0.2	−0.14 (−0.38 to 0.11)
<p>*Random-effect logistic regression with region as the cluster level, adjusting for the following baseline characteristics: age, gender, BMI, marital status, educational level, occupation, alcohol use, hypertension, hypercholesterolaemia, diabetes, self-reported health, years of tobacco smoking (former smoking for e-cigarette users), number of tobacco cigarettes smoked per day (or puffs per day for e-cigarette only smokers). A total of 902 participants were included in the final model due to 30 missing items in the self-reported health item at baseline.</p> <p>†Including (1) users of e-cigarettes only at baseline who quit e-cigarette use and did not start tobacco smoking; (2) smokers of tobacco cigarettes only at baseline who quit tobacco cigarette use and did not start e-cigarette use; (3) dual users at baseline who quit both tobacco smoking and e-cigarette use; (4) e-cigarette users at baseline who continued to use only e-cigarettes; (5) tobacco cigarettes smokers at baseline who quit tobacco smoking and started using e-cigarettes; (6) dual users at baseline who quit tobacco smoking and continued to use e-cigarettes only.</p> <p>‡Random-effect logistic regression with region as the cluster level, adjusting for age, baseline self-reported health and quitting all smoking during the 24-month follow-up.</p> <p>§E-cigarette-only users at baseline were not included. Random-effect logistic regression with region as the cluster level, adjusting for the following baseline characteristics: age, gender, BMI, marital status, educational level, occupation, alcohol use, hypertension, hypercholesterolaemia, diabetes, self-reported health, years of tobacco smoking, number of tobacco cigarettes smoked per day. A total of 682 participants were included in the final model due to 21 missing items in the self-reported health item at baseline.</p> <p>¶Computed from a model that included the whole sample of tobacco and dual smokers at baseline.</p> <p>**Computed from a model that included only the subsample of baseline smokers who continued smoking at 24 months (excluding those who had quit and whose cigarette consumption was zero at follow-up).</p> <p>††Restricted to tobacco only smokers or dual users at baseline who did not quit or switch to e-cigarettes only (n=529). Random-effect logistic regression with region as the cluster level, adjusting for the following baseline characteristics: age, gender, self-reported health, years of tobacco smoking, number of tobacco cigarettes smoked per day.</p> <p>‡‡E-cigarette-only users at baseline were not included. Random-effect linear regression with region as the cluster level, adjusting for the following baseline characteristics: age, gender, BMI, marital status, educational level, occupation, alcohol use, hypertension, hypercholesterolaemia, diabetes, self-reported health, years of tobacco smoking, number of tobacco cigarettes smoked per day. A total of 682 participants were included in the final model due to 21 missing items in the self-reported health item at baseline.</p> <p>§§Restricted to tobacco-only smokers or dual users at baseline who did not quit or switch to e-cigarettes only (n=529). Random-effect linear regression with region as the cluster level, adjusting for the following baseline characteristics: age, gender, self-reported health, years of tobacco smoking, number of tobacco cigarettes smoked per day.</p> <p>¶¶Random-effect linear regression with region as the cluster level, adjusting for the following baseline characteristics: age, gender, BMI, marital status, educational level, occupation, alcohol use, hypertension, hypercholesterolaemia, diabetes, self-reported health, years of tobacco smoking (former smoking for e-cigarette users), number of tobacco cigarettes smoked per day (or puffs per day for e-cigarette only smokers). A total of 899 participants were included in the final model due to 30 missing items in the self-reported health item at baseline and 3 missing items in the self-reported health at 24 months.</p> <p>BMI, body mass index; sAEs, serious adverse events.</p>			

information on dual users. However, when baseline and 24-month use data were considered together, we found that tobacco-only smokers who started dual use or dual users who continued dual use were significantly more likely to reduce the average number of daily cigarettes, to reduce their consumption by 50% or more, and showed a significant increase in self-rated health at 24 months compared with those who returned to or continued smoking only tobacco. Similarly, while baseline dual users showed a significantly higher probability of a serious adverse event, all these events occurred in participants who switched group during the 24-month follow-up: six stopped smoking (two of whom continued using e-cigarettes) and eight returned to only smoking cigarettes. Moreover, it cannot be excluded that, particularly for those who returned to only smoking tobacco, the previous years of exposure to smoking (23 years on average in our sample) played a greater role in developing an adverse health outcome beyond the 1-year (n=4) or 2-year (n=4) periods of dual use.

Our findings on smoking cessation and reduction rates are comparable to some previous studies,^{10 14 16 18 20 33} but different from others.^{11 13 15 17 18 33} As a potential explanation, three of the latter studies may have had less motivated samples,^{9 11 17} and another included some countries with an e-cigarette ban, which could affect use patterns.¹³ Our relapse rate to tobacco smoking among e-cigarette users doubled the estimate by Etter and Bullen¹⁶ (whose sample, however, may have been highly motivated to maintain abstinence from smoking as they were recruited from smoking cessation websites), but was much lower than the $\approx 94\%$ relapse rate in the randomised controlled trial by Bullen *et al.*⁸ However, our observational study included e-cigarette users who were already abstinent from tobacco smoking for many months prior to recruitment, did not control for type of e-cigarette used and had broader inclusion criteria than some other studies (eg, included smokers of <10 cigarettes per day).

Some of our study limitations have already been reported in detail elsewhere.²⁶ In brief, smoking cessation was partially self-reported. However, we tested CO levels in 50% of the sample in the 24-month follow-up, finding false declarations were sporadic (n=1 among e-cigarette users; n=2 among tobacco smokers). Second, we had no 24-month follow-up data for 31.2% of baseline participants. However, the loss rate is still lower than those in most previous prospective studies,^{9 11 14 16–18} and non-responders were similar to responders for most baseline variables.²⁶ Third, we did not distinguish between different types of e-cigarettes used, and could not reliably assess frequency of use. These factors (product type and frequency of use) appear to be important characteristics predicting change in smoking behaviour.^{14 19 20} Finally, it has been suggested that dual users are frequently ‘quitting failures’ and thus biased against cessation.⁶ However, in our sample, the proportion of those who tried quitting before was quite similar between tobacco smokers (33.7%) and dual users (35.9%).

CONCLUSIONS

Overall, the first 2 years of the study confirm that switching completely to e-cigarettes might help tobacco smokers remain abstinent from smoking. The findings on dual use of e-cigarettes and tobacco smoking remain controversial: dual use did not improve the likelihood of quitting tobacco or use of e-cigarettes, but it may facilitate the reduction of tobacco cigarette consumption and improve self-rated health. Dual use also did not appear to reduce smoking quit rates compared with those of smokers not using e-cigarettes. Adverse events were still scarce, and the

Table 3 Quitting and switching cigarette use during follow-up

	Cigarette use at baseline		
	E-cigarettes only (n=229)	Tobacco cigarettes only (n=480)	Dual use (n=223)
Switching to another product use group at 24 months	(n=229)	(n=480)	(n=223)
No switch	42.4	75.6	16.6
Switch to no product use	18.8	17.5	14.3
Switch from e-cigarettes only to dual use or tobacco-only smoking	38.9	—	—
Switch from dual use or tobacco-only smoking to e-cigarettes only	—	5.6	11.7
Switch from dual use to tobacco-only smoking	—	—	57.4
Switch from tobacco only to dual use	—	1.3	—
Quitting all product use			
Quit all product use* at 12 months (n=125)	(n=34)	(n=65)	(n=26)
Remained abstinent from both tobacco cigarettes and e-cigarettes at 24 months	76.5	72.3	69.2
Relapsed to either tobacco and/or e-cigarettes at 24 months	23.5	27.7	30.8
Tobacco smoking quitters at 12 months (n=106)	(n=0)	(n=69)	(n=37)
Remained abstinent from smoking at 24 months	—	69.7	74.0
Relapsed to tobacco smoking at 24 months	—	30.3	26.0

*Both tobacco smoking abstinence/cessation and e-cigarette use abstinence/cessation.

next years of follow-up will help clarify safety concerns, which remain the most important issue to support policies on e-cigarettes use.

What this paper adds

- Despite the potential public health relevance, the current evidence on long-term safety and efficacy/effectiveness of e-cigarettes is scarce and conflicting.
- After 24 months of a prospective follow-up, most users of e-cigarettes alone were able to remain abstinent from tobacco smoking.
- Dual use of e-cigarettes with tobacco cigarettes did not encourage quitting tobacco or e-cigarette use, but may be helpful to reduce tobacco consumption.

Author affiliations

¹Department of Medicine and Aging Sciences, University of Chieti, Chieti, Italy

²Local Health Unit of Pescara, Pescara, Italy

³"University G. d'Annunzio" Foundation, Chieti, Italy

⁴Regional Healthcare Agency of Abruzzo, Pescara, Italy

⁵Department "G. F. Ingrassia"—Hygiene and Public Health, University of Catania, Catania, Italy

⁶Department of Clinical Sciences and Community Health, University of Milan, Milan, Italy

⁷Department of Public Health Sciences, University of Turin, Turin, Italy

⁸Italian National Institute of Health, Rome, Italy

⁹Institute of Public Health, Università Cattolica del Sacro Cuore, Rome, Largo Francesco Vito, Roma, Italy

¹⁰Department of Public Health and Infectious Diseases, Sapienza University of Rome, Roma, Italy

Acknowledgements Although their contribution has been substantial, some of the authors have been listed as ISLESE (Italian Study on Long-term E-cigarette Safety and Efficacy) Working Group, including Maria Rosaria Gualano (University of Turin, Italy), Giancarlo Cicolini (Local Health Unit of Lanciano-Vasto-Chieti, Italy), Giorgia Fragassi (University of Chieti, Italy), Giorgio Liguori (University Parthenope of Naples) and Stefania Boccia (Università Cattolica del Sacro Cuore, Rome). The investigators are also grateful to Dr Serena Di Sante, Giorgia Di Sante, the students of the Faculty of Medicine of Catania and general practitioners from Abruzzo (Francesco Di Silvestro, Luciano Giacci, Marino Mincone, Gabriella Salladini, Giuliano Salvio, Renato Seller, Lucio Zinni) for their help during recruitment.

Collaborators Maria Rosaria Gualano (Department of Public Health Sciences, University of Turin, Turin, Italy); Giancarlo Cicolini (Local Health Unit of Lanciano-Vasto-Chieti, Chieti, Italy); Giorgia Fragassi (Department of Medicine and Aging Sciences, University of Chieti, Chieti, Italy); Giorgio Liguori (Department of Movement Sciences and Wellbeing, University Parthenope of Naples, Naples, Italy); Stefania Boccia (Institute of Public Health, Università Cattolica del Sacro Cuore, Rome, Italy).

Contributors All the authors and the collaborators participated in the design, analysis and interpretation of the study. LM, MEF, CLV, RS, WR, MFi and PV were involved in all phases of the study. MFe and CM collected baseline and follow-up data, and participated in data-analysis. LM and MEF tested CO levels, linked hospital admissions and wrote the manuscript. LM is the guarantor for all data.

Funding The first 2 years of the study were unfunded. The next 3 years of follow-up are going to be funded through crowdfunding (Kickstarter project titled 'E-cigarette long-term efficacy & safety: a study to complete'). Besides seven authors (MEF, RS, MRG, GL, MFi, PV, CM) and seven anonymous contributors, who donated a total of €515 and €80, respectively, all other contributors are private citizens. The authors are indebted to all of them: Mattia Brescianini, Necdet Yucel, Giuseppe Prosperini, Giancarlo Cicolini, Ludovica Rotunno, Annalisa Esposito, Cristina Naccarato, Phuong Pham, Giorgia Fragassi, Giorgio Salvatore, Maria Grazia D'Agati, Giacomo Manzoli, Eliseo Torrez, Cheng Kin Phang, Ryan White, Placido D'Agati, Fabrizio Bert, Macz Yaemmaneechai, Felice Iossa, Lu Gedge, Carol Long, Patrick Murphy, Jeff Mundine, Lucia Manzoli, Martin Smith, Julien Malfroy, Taylor Darsey, Sam Lewis, Jeff George and Alexander van der Wal.

Competing interests None declared.

Patient consent Obtained.

Ethics approval Ethics Committee of the University of Chieti.

Provenance and peer review Not commissioned; externally peer reviewed.

Data sharing statement The raw data set is available from the corresponding author on request.

Open Access This is an Open Access article distributed in accordance with the Creative Commons Attribution Non Commercial (CC BY-NC 4.0) license, which permits others to distribute, remix, adapt, build upon this work non-commercially, and license their derivative works on different terms, provided the original work is properly cited and the use is non-commercial. See: <http://creativecommons.org/licenses/by-nc/4.0/>

REFERENCES

- 1 Chang AY, Barry M. The global health implications of e-cigarettes. *JAMA* 2015;314:663–4.
- 2 Manzoli L, Boccia S. Electronic cigarettes: scarce data and divergent legislations. The need for evidence-based health policies and research funding. *Eur J Public Health* Published Online First: 1 Oct 2015. doi:10.1093/eurpub/ckv179
- 3 McKee M, Capewell S. Evidence about electronic cigarettes: a foundation built on rock or sand? *BMJ* 2015;351:h4863.

- 4 Gualano MR, Passi S, Bert F, *et al.* Electronic cigarettes: assessing the efficacy and the adverse effects through a systematic review of published studies. *J Public Health (Oxf)* 2015;37:488–97.
- 5 Hajek P. Electronic cigarettes have a potential for huge public health benefit. *BMC Med* 2014;12:225.
- 6 McRobbie H, Bullen C, Hartmann-Boyce J, *et al.* Electronic cigarettes for smoking cessation and reduction. *Cochrane Database Syst Rev* 2014;12:CD010216.
- 7 Pisinger C, Dossing M. A systematic review of health effects of electronic cigarettes. *Prev Med* 2014;69:248–60.
- 8 Bullen C, Howe C, Laugesen M, *et al.* Electronic cigarettes for smoking cessation: a randomised controlled trial. *Lancet* 2013;382:1629–37.
- 9 Caponnetto P, Campagna D, Cibella F, *et al.* Efficiency and Safety of an eElectronic cigarette (ECLAT) as tobacco cigarettes substitute: a prospective 12-month randomized control design study. *PLoS ONE* 2013;8:e66317.
- 10 Polosa R, Caponnetto P, Morjaria JB, *et al.* Effect of an electronic nicotine delivery device (e-Cigarette) on smoking reduction and cessation: a prospective 6-month pilot study. *BMC Public Health* 2011;11:786.
- 11 Polosa R, Morjaria JB, Caponnetto P, *et al.* Effectiveness and tolerability of electronic cigarette in real-life: a 24-month prospective observational study. *Intern Emerg Med* 2014;9:537–46.
- 12 Adriaens K, Van Gucht D, Declerck P, *et al.* Effectiveness of the electronic cigarette: an eight-week Flemish study with six-month follow-up on smoking reduction, craving and experienced benefits and complaints. *Int J Environ Res Public Health* 2014;11:11220–48.
- 13 Adkison SE, O'Connor RJ, Bansal-Travers M, *et al.* Electronic nicotine delivery systems: international tobacco control four-country survey. *Am J Prev Med* 2013;44:207–15.
- 14 Biener L, Hargraves JL. A longitudinal study of electronic cigarette use in a population-based sample of adult smokers: association with smoking cessation and motivation to quit. *Nicotine Tob Res* 2015;17:127–33.
- 15 Choi K, Forster JL. Beliefs and experimentation with electronic cigarettes: a prospective analysis among young adults. *Am J Prev Med* 2014;46:175–8.
- 16 Etter JF, Bullen C. A longitudinal study of electronic cigarette users. *Addict Behav* 2014;39:491–4.
- 17 Grana RA, Popova L, Ling PM. A longitudinal analysis of electronic cigarette use and smoking cessation. *JAMA Intern Med* 2014;174:812–13.
- 18 Vickerman KA, Carpenter KM, Altman T, *et al.* Use of electronic cigarettes among state tobacco cessation quitline callers. *Nicotine Tob Res* 2013;15:1787–91.
- 19 Brose LS, Hitchman SC, Brown J, *et al.* Is the use of electronic cigarettes while smoking associated with smoking cessation attempts, cessation and reduced cigarette consumption? A survey with a 1-year follow-up. *Addiction* 2015;110:1160–8.
- 20 Hitchman SC, Brose LS, Brown J, *et al.* Associations between e-cigarette type, frequency of use, and quitting smoking: findings from a longitudinal online panel survey in Great Britain. *Nicotine Tob Res* 2015;17:1187–94.
- 21 Al-Delaimy WK, Myers MG, Leas EC, *et al.* E-cigarette use in the past and quitting behavior in the future: a population-based study. *Am J Public Health* 2015;105:1213–19.
- 22 Pearson JL, Stanton CA, Cha S, *et al.* E-cigarettes and smoking cessation: insights and cautions from a secondary analysis of data from a study of online treatment-seeking smokers. *Nicotine Tob Res* 2015;17:1219–27.
- 23 Sutfin EL, Reboussin BA, Debinski B, *et al.* The impact of trying electronic cigarettes on cigarette smoking by college students: a prospective analysis. *Am J Public Health* 2015;105:e83–9.
- 24 Rahman MA, Hann N, Wilson A, *et al.* E-cigarettes and smoking cessation: evidence from a systematic review and meta-analysis. *PLoS ONE* 2015;10:e0122544.
- 25 Kalkhoran S, Glantz SA. E-cigarettes and smoking cessation in real-world and clinical settings: a systematic review and meta-analysis. *Lancet Respir Med* 2016;4:116–28.
- 26 Manzoli L, Flacco ME, Fiore M, *et al.* Electronic cigarettes efficacy and safety at 12 months: cohort study. *PLoS ONE* 2015;10:e0129443.
- 27 Manzoli L, La Vecchia C, Flacco ME, *et al.* Multicentric cohort study on the long-term efficacy and safety of electronic cigarettes: study design and methodology. *BMC Public Health* 2013;13:883.
- 28 Savoia E, Fantini MP, Pandolfi PP, *et al.* Assessing the construct validity of the Italian version of the EQ-5D: preliminary results from a cross-sectional study in North Italy. *Health Qual Life Outcomes* 2006;4:47.
- 29 Stoltzfus JC. Logistic regression: a brief primer. *Acad Emerg Med* 2011;18:1099–104.
- 30 Krall EA, Garvey AJ, Garcia RI. Smoking relapse after 2 years of abstinence: findings from the VA Normative Aging Study. *Nicotine Tob Res* 2002;4:95–100.
- 31 Ahmed AA, Patel K, Nyaku MA, *et al.* Risk of heart failure and death after prolonged smoking cessation: role of amount and duration of prior smoking. *Circ Heart Fail* 2015;8:694–701.
- 32 Kenfield SA, Stampfer MJ, Rosner BA, *et al.* Smoking and smoking cessation in relation to mortality in women. *JAMA* 2008;299:2037–47.
- 33 Caponnetto P, Auditore R, Russo C, *et al.* Impact of an electronic cigarette on smoking reduction and cessation in schizophrenic smokers: a prospective 12-month pilot study. *Int J Environ Res Public Health* 2013;10:446–61.