

Effects of the economic crisis on smoking prevalence and number of smokers in the USA

Silvano Gallus,¹ Simone Ghislandi,^{1,2} Raya Muttarak^{1,3}

► Additional material is published online only. To view please visit the journal online (<http://dx.doi.org/10.1136/tobaccocontrol-2012-050856>).

¹Department of Epidemiology, IRCCS—Istituto di Ricerche Farmacologiche Mario Negri, Milan, Italy

²ECONPUBBLICA, Department of Policy Analysis and Public Management, Bocconi University, Milan, Italy

³Wittgenstein Centre for Demography and Global Human Capital (IIASA, VID/ÖAW, WU), Vienna Institute of Demography/Austrian Academy of Sciences, Vienna, Austria

Correspondence to

Dr Silvano Gallus, Department of Epidemiology, IRCCS—Istituto di Ricerche Farmacologiche Mario Negri, Via G La Masa, 19, Milan 20156, Italy; silvano.gallus@marionegri.it

Received 24 October 2012

Accepted 9 July 2013

Published Online First

16 August 2013

ABSTRACT

Objective Scanty and controversial information is available on the impact of macroeconomic fluctuations on smoking behaviour. No study has quantified the effects of fiscal crises on smoking prevalence. This study aimed to investigate the effects of the 2007–2008 economic crisis on smoking prevalence and number of smokers in the USA.

Methods Using data from the repeated Behavioural Risk Factor Surveillance System (BRFSS) surveys in pre-crisis (2005–2007) and post-crisis (2009–2010) periods on a total of 1 981 607 US adults, we separated the expected (after allowance for the demographic growth of the US population, secular smoking prevalence trends and changes in sociodemographic characteristics) from the unexpected (assumed attributable to the economic crisis) changes in the number of smokers across different employment statuses.

Results Joinpoint regression analysis revealed no significant changes in smoking prevalence trends over the period 2005–2010. The crisis resulted in an increase in the number of smokers in the US by 0.6 million. This is largely due to an unexpected decrease of 1.7 million smokers among employed and an increase of 2.4 million smokers among unemployed individuals, whose smoking prevalence also remains extremely high in the post-crisis period (32.6%).

Conclusions The 2008 financial crisis had a weak effect on smoking prevalence. The pro-cyclical relationship (ie, the crisis results in a lower number of smokers) found among the employed is offset by the counter-cyclical relationship (ie, the crisis results in a higher number of smokers) found among unemployed individuals. Public health interventions should specifically target those in unemployment, particularly in hard times.

INTRODUCTION

As it became clear that the current global economic recession triggered by the financial crisis in 2007–2008 would last for many years to come, concerns were raised about its consequences on poverty, development and public health. With a decline in government welfare expenditures, reduction of household income and increases in job losses there have been warnings that health would deteriorate, particularly for the most vulnerable individuals.^{1–2} Based on evidence from past economic downturns, however, it remains unclear whether health gets worse during recessions.^{3–5} On the one hand, several studies reported a pro-cyclical relationship (ie, economic crisis results in improved health). Economic downturns have been associated with a decline in alcohol-related deaths,⁶ traffic deaths^{7–10} alcohol consumption^{6 11 12} and obesity,¹³ as well as increased physical activity.¹³ On the other hand, a

counter-cyclical relationship (ie, hard times result in deteriorating health) has been observed for other outcomes, including increased suicide rates,^{14–16} worsening mental health conditions¹⁷ and increased consumption of unhealthy food.¹⁸

Scanty and controversial information is available on the role of the economic crisis on smoking behaviour. At least four studies have found that smoking prevalence increases during periods of expanding economic growth and vice versa, thus suggesting that economic crises have pro-cyclical effects on smoking.^{7 13 19 20} In contrast, a large study of individuals aged 15–24 years reported an increase in tobacco use when the economy is weak.²¹

During the 2008 economic crisis, unexpected smoking prevalence trends have been observed in selected high-income countries. A study from Italy reported a significant increase in smoking prevalence from 22.0% in 2008 to 25.4% in 2009 after the spread of the economic crisis,²² although this increase was not sustained.²³ Similarly, in the US, data from the National Health Interview Survey (NHIS) showed an unexpected increase in smoking prevalence from 19.8% in 2007 to 20.6% in 2008,²⁴ but other representative surveys, including the Behavioural Risk Factor Surveillance System (BRFSS), did not show substantial changes in smoking prevalence over the same period.²⁵

Given the inadequate and contradictory information on the impact of the economic crisis on smoking behaviour, the 2008 financial crisis provides a unique opportunity to generate new evidence on this issue. Using a large nationally representative survey of US adults, we analysed the effects of the current economic crisis on smoking behaviours, taking the realistic view that one major effect of the economic crisis is to reallocate people across various employment statuses, with substantially different smoking prevalence rates.

Hence, the crisis might affect the number of smokers directly (that is, by changing smoking prevalence) and indirectly (that is, by shifting people from one employment group to another). Within this general framework, the present study had three main objectives: (1) to detect changes in trends of smoking prevalence in the USA over the period 2005–2010, overall and by employment status; (2) to assess the effects of the economic crisis on US smoking prevalence, overall and by employment status; and (3) to estimate the number of smokers attributable to the economic crisis in the USA, overall and by employment status.

METHODS

The analysis is based on repeated cross-sectional data from the BRFSS survey for 2005 to 2010.²⁶



To cite: Gallus S, Ghislandi S, Muttarak R. *Tob Control* 2015;**24**:82–88.

Disaggregate data were obtained online from the website of the Centers for Disease Control and Prevention (CDC; <http://www.cdc.gov/brfss>), where a detailed description of the methods and questionnaires is available.^{26 27}

The BRFSS is a large state-based, random-digit-dialled telephone survey of non-institutionalised US population aged ≥ 18 years annually administered since 1984 by the CDC. Between 2005 and 2010, data were collected monthly in all 50 states, the District of Columbia, Puerto Rico and the US Virgin Islands. With reference to the variables used in the present analyses, the BRFSS questionnaire did not change over the period 2005–2010.²⁷ Besides month of interview and statistical weights, information on sociodemographic characteristics, including age, sex, state of residence, race/ethnic group, education, marital status and employment status was retrieved. For the present analyses, employment status was categorised into five groups: (i) employed ('employed for wages' and 'self-employed'), (ii) unemployed ('out of work for more than 1 year' and 'out of work for less than 1 year'), (iii) 'unpaid/unable to work' ('a homemaker' and 'unable to work'), (iv) students and (v) retired. Based on questions related to smoking behaviours, smoking status (current vs non-smokers) was obtained. Current smokers were defined as individuals who (i) responded that they had smoked more than 100 cigarettes in their lifetime; and (ii) responded that they smoke every day or some days. Statistical weights, ensuring representativeness of the samples of the overall US adult population, were used in all the analyses.

Joinpoint analysis

To identify possible significant changes in the trends of the monthly smoking prevalence in the US between January 2005 and December 2010, we carried out joinpoint regression analyses, overall and by sex and employment status, using the software provided by the Surveillance Research Program of the US National Cancer Institute.²⁸ The aim of the joinpoint analysis is to identify possible points where a statistically significant change in the linear slope of the trend is detected over the study period.^{29 30} The best fitting points, called 'joinpoints', are chosen where the rate changes significantly. To derive monthly US smoking prevalences, we considered the entire sample of the participants of the six BRFSS studies conducted between 2005 and 2010 with available information on smoking, sex and employment status. From the monthly percentage changes we derived the annual percentage change (APC).

Standardised smoking prevalence ratio

In order to assess the effects of the economic crisis on US smoking prevalence, overall and by employment status, we employed a non-parametric analysis using data from the BRFSS surveys conducted in 2005, 2006, 2007, 2009 and 2010, distinguishing between the pre-crisis (2005–2007) and the post-crisis (2009–2010) samples. We excluded from the analyses the BRFSS survey of 2008, and all the subjects with missing values in at least one of the variables of interest (smoking status, sex, age, education, marital status, race and employment status). The analysis sample was 1 981 607 total participants, 1 122 424 before (2005–2007) and 859 183 after the financial crisis (2009–2010). The effects of the economic crisis on smoking prevalence cannot simply be assessed by comparing the pre-crisis smoking prevalence rates with post-crisis ones. We need to take into account (i) the change in individual characteristics over the two periods; and (ii) the pre-crisis time trend of smoking.

In order to control for the possible changes in socioeconomic characteristics (i), we used an indirect non-parametric standardisation, given stratum-specific smoking prevalence rates from the overall population in the pre-crisis period (used as the reference population). A total of 448 strata, resulting from a combination of the different demographic compositions including sex (2 categories), age (7 categories), education (4 categories), race (4 categories) and marital status (2 categories), were used for the standardisation.

To control for the pre-crisis time trend (ii), once we verified that time trends for smoking prevalence do not change significantly and that a linear trend is the best approximation of the prevalence trend within each group, we projected pre-crisis trends for each employment status in order to build group-specific expected values for the post-crisis prevalence ratios. Thus, the standardised smoking prevalence rates for the 2009–2010 population (post-crisis sample) were further controlled by the sex-specific and employment-status-specific smoking prevalence trends observed during the period from January 2005 to December 2007.

The expected smoking prevalence was therefore obtained after indirect standardisation for sociodemographic characteristics and, for the period 2009–2010, taking into account the sex-specific and employment-group-specific secular trends of 2005–2007 smoking prevalence. The standardised smoking prevalence rates, after allowance for the sex-specific and employment-status-specific smoking prevalence trends, represent the expected smoking prevalence rates in the post-crisis period (2009–2010). The standardised smoking prevalence ratio (SSPR) represents the ratio between the observed and the expected smoking prevalence. Values greater than 1 indicate the smoking prevalence among the study population is higher than that of the general adult population of the pre-crisis period, whereas values less than 1 indicate a lower prevalence.

Main analysis

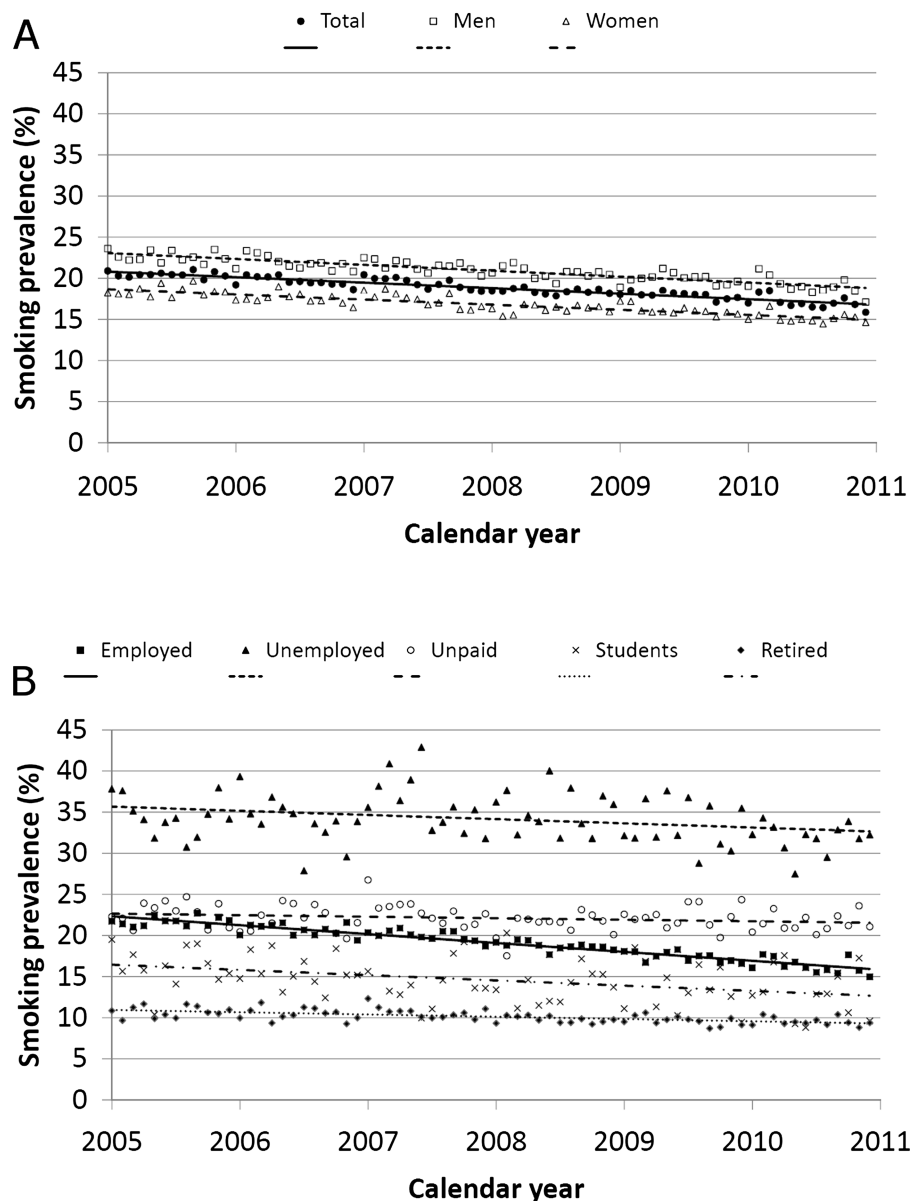
The main objective of this study was to measure the impact of the crisis on the change in the number of smokers. For this purpose, we extend the prevalence values obtained from the BRFSS to calculate the number of smokers in the general US adult population, using data for population size obtained from the US Census Bureau.³¹ In order to establish how much of the change in the number of smokers in the post-crisis period is due to the economic crisis, one has to consider that the number of smokers would have changed even without the crisis, given the variation in the number of people and the natural trends of smoking prevalence within each employment status.

To identify the impact of the crisis, we followed a two-step procedure. First, we broke down the change in the number of smokers into a population effect (change in the population distribution across employment statuses) and a prevalence effect (change in the within-group prevalence). Second, we further broke down these two elements into an expected (what would have happened if the status quo remains) and an unexpected change. The impact of the crisis was then estimated as the change in the number of smokers that was not expected by simply looking at the pre-crisis population and prevalence patterns as described below: (see online supplementary appendix for a calculation method).

- Change due to variation in the distribution of population: this part measures the change in the number of smokers that would follow if people within each employment status continued smoking as in the pre-crisis period. This change is further broken down in two parts:

- A. Expected: the number of smokers attributable simply to a demographic change of the US population between the pre-crisis and the post-crisis periods. The post-crisis number of US citizens is allocated in different employment statuses according to their pre-crisis distribution. The pre-crisis group-specific prevalence is then applied.
- B. Unexpected: the difference between the observed change in the number of smokers due to population change and A.
- Change due to variation in group-specific smoking prevalence: this part measures the change in the number of smokers following the change in the group-specific prevalence. It can be broken down as follows:
- C. Expected: the change in the number of smokers attributable to the pre-crisis prevalence taking into account the secular trend (C1) and the change in sociodemographic characteristics of the population in each employment status (C2).
- D. Unexpected: the difference between the observed change in the number of smokers due to prevalence change and C.
- We assume that the sum of parts B and D—the parts left unexplained—represents the change in the number of smokers attributable to the economic crisis.

Figure 1 US smoking prevalence trends overall and by sex (A), and by employment status (B): joinpoint analysis. Behavioural Risk Factor Surveillance System (BRFSS) 2005–2010.



RESULTS

Over the period 2005–2010 smoking prevalences for US adults had been declining overall and for both sexes. Based on joinpoint regression analysis, we identified no statistically significant changes in trends: the best slope was a linear trend for the whole period for the total population (absolute APC: -0.67%) and separately for men (APC: -0.72%) and women (APC: -0.62%). For the employed the trend was particularly steep (APC: -1.08%), while for the unemployed (APC: -0.51%), the unpaid/unable to work (APC: -0.19%), students (APC: -0.64%) and those in retirement (APC: -0.27%) the slopes are rather flat (figure 1).

Table 1 shows the distribution of the studied population according to their demographic and socioeconomic characteristics and smoking prevalence in 2005–2007 (pre-crisis period) and 2009–2010 (post-crisis period). The distribution of the sample population by age, sex, race, marital status and education did not vary substantially between the two periods. Notably, the proportion of those in employment declined from 61.2% in 2005–2007 to 57.1% in 2009–2010. Simultaneously, the proportion of unemployed individuals rose substantially from 5.0%

Table 1 Percentage distribution of 1 981 607 US subjects according to selected sociodemographic characteristics and smoking status. BRFSS 2005–2007, 2009–2010

Characteristics	2005–2007 (%)	2009–2010 (%)
Age		
<25	12.9	11.2
25–44	38.1	37.5
45–64	32.4	34.0
≥65	16.7	17.4
Sex		
Men	48.5	48.6
Women	51.5	51.4
Race/ethnicity		
White	69.2	68.8
Black	9.5	10.1
Hispanic	14.7	14.2
Other	6.6	6.9
Marital status		
Married	60.1	61.1
Divorced/separated	11.1	10.7
Widow	6.5	6.2
Single	18.3	18.5
Couple	4.1	3.6
Education level		
Low education	12.0	10.4
High school	29.3	28.0
Some college	26.2	26.4
College graduate	32.5	35.2
Employment status		
Employed	61.2	57.1
Unemployed	5.0	8.6
Unpaid/unable to work	13.3	13.2
Students	4.5	4.8
Retired	16.1	16.2
Smoking status		
Never smoker	55.9	57.6
Ex-smoker	24.3	24.9
Current smoker	19.8	17.5
Number of participants	1 122 424	859 183

BRFSS, Behavioural Risk Factor Surveillance System.

in 2005–2007 to 8.6% in 2009–2010 ($p<0.001$). Smoking prevalence also declined significantly from 19.8% in 2005–2007 to 17.5% in 2009–2010 ($p<0.001$).

Table 2 shows the distribution of observed and expected smoking prevalences, and the SSPR for the pre-crisis (2005–2007) and post-crisis (2009–2010) periods, overall and by sex, according to employment status. Overall smoking prevalence declined from 19.8% (22.0% in men and 17.8% in women) in 2005–2007 to 17.5% (19.5% in men and 15.7% in women) in 2009–2010. The expected smoking prevalence in 2009–2010, after accounting for sociodemographic characteristics and pre-crisis trend in smoking prevalence, was 17.1% (19.1% in men and 15.1% in women). Therefore, in the post-crisis period the observed smoking prevalence was higher than the expected one overall (SSPR=1.026), in men (SSPR=1.019) and in women (SSPR=1.034). The observed smoking prevalence rates vary considerably by employment status in the pre-crisis and post-crisis periods. For those who were employed, SSPR was 0.982 in the pre-crisis and 0.997 in the post-crisis period, indicating that

employed individuals smoked slightly less than the overall population. In contrast, the unemployed had a substantially higher observed smoking prevalence than the average in the pre-crisis (34.9% vs 26.3%; SSPR=1.325) and the post-crisis periods (32.6% vs 26.9%; SSPR=1.213), despite the fact that this category was suddenly (due to the crisis) populated by a substantial number of formerly employed people, who on average were less likely to smoke. For those who are unpaid/unable to work, SSPR was 1.077 in the pre-crisis and 1.061 in the post-crisis period. The corresponding SSPR estimates for students were 0.673 and 0.639, and those for retired individuals were 0.964 and 0.935, in the pre-crisis and post-crisis periods, respectively.

Table 3 shows the absolute number of smokers (in thousands) for the overall US population by employment status. The reduction in the total number of smokers between pre-crisis and post-crisis periods (3.49 million smokers less) was largely due to the decline in the number of smokers among the employed individuals in the post-crisis period (5.98 million smokers less), partially counterbalanced by the increase in the number of smokers among the unemployed (2.68 million smokers more). The large decline observed in employed individuals is the result of (i) a reduction of 0.85 million smokers due to the change in population (although projecting the pre-crisis employment rates we would expect 1.1 million smokers more), plus (ii) the change in smoking prevalence, resulting in 5.13 million smokers less (3.21 million less due to the employed-specific secular trend, 2.28 million less due to changes in the sociodemographic characteristics of the employed and 0.36 million more due to unexpected change). The economic crisis was therefore responsible for a reduction of 1.68 million smokers among US employed individuals. Those who were unemployed showed an increase in the number of smokers by 2.68 million smokers, largely due to an unexpected increase in the number of individuals entering unemployment in the post-crisis period (3.26 million smokers more). At the same time, the change in smoking prevalence contributed only slightly to the change in the total number of smokers among the unemployed (0.59 million smokers less). For other employment statuses, we observed only a moderate change in the number of smokers.

Overall, the 3.49 million smokers less are the result of an increase in the number of smokers due to the change in population (3.12 million smokers more, of whom 1.28 million unexpected and due to the economic crisis), and a decrease in smoking prevalence (6.61 million smokers less, of whom only 0.66 million due to the economic crisis). Therefore, in the US, the economic crisis accounted for 0.62 million smokers more (ie, 1.5% of total cigarette smokers in 2009–2010).

DISCUSSION

This is the first original study quantifying the effects of the 2007–2008 economic crisis on smoking prevalence. Results show that US smoking prevalence declined from 19.8% in the pre-crisis (2005–2007) to 17.5% in the post-crisis period (2009–2010), corresponding to a fall in the number of adult smokers by 3.5 million. However, once (i) the demographic increase of the US population, (ii) the pre-crisis secular trends in smoking prevalence and (iii) the change in the distribution of population by sociodemographic characteristics are taken into account, we would expect a fall in the number of US smokers by approximately 4.1 million adults. The economic crisis therefore appears to have increased the number of smokers by 0.6 million in the overall US adult population.

Three key issues are worth discussing. First, most of the impact of the crisis comes from the shift of a substantial part of

Table 2 Distribution of observed and expected US SP estimates according to calendar period: pre-crisis (2005–2007) versus post-crisis (2009–2010), overall and by sex. Corresponding SSPR. BRFSS, 2005–2007, 2009–2010

Factor	Smoking prevalence (%)					
	Pre-crisis 2005–2007			Post-crisis 2009–2010		
	Total	Men	Women	Total	Men	Women
Total						
Observed SP	19.80	21.97	17.76	17.52	19.50	15.65
Expected SP*	19.80	21.97	17.76	17.08	19.13	15.14
SSPR	1.000	1.000	1.000	1.026	1.019	1.034
Number of participants	1 122 424	544 197	578 227	859 183	417 489	441 694
Employed						
Observed SP	20.74	22.23	18.89	16.86	18.10	15.39
Expected SP*	21.13	22.81	19.04	16.91	18.57	14.93
SSPR	0.982	0.975	0.992	0.997	0.975	1.031
Number of participants	686 986	379 980	307 006	490 853	266 850	224 003
Unemployed						
Observed SP	34.87	39.58	30.22	32.59	36.35	27.73
Expected SP*	26.32	29.71	22.97	26.88	33.11	19.87
SSPR	1.325	1.332	1.316	1.213	1.098	1.395
Number of participants	55 551	27 625	27 926	73 896	41 645	32 251
Unpaid/unable to work						
Observed SP	22.50	37.93	18.99	21.87	36.44	18.25
Expected SP*	20.89	30.68	18.67	20.62	30.99	17.81
SSPR	1.077	1.236	1.017	1.061	1.176	1.025
Number of participants	149 024	27 567	121 457	113 437	22 602	90 835
Student						
Observed SP	15.30	15.80	14.86	13.21	13.53	12.88
Expected SP*	22.73	25.08	20.66	20.66	22.51	19.18
SSPR	0.673	0.630	0.719	0.639	0.601	0.672
Number of participants	50 750	23 763	26 987	41 602	20 633	20 969
Retired						
Observed SP	10.59	11.63	9.66	9.61	10.58	8.73
Expected SP*	10.99	12.01	10.08	10.28	10.66	9.88
SSPR	0.964	0.968	0.958	0.935	0.992	0.883
Number of participants	180 113	85 262	94 851	139 395	65 759	73 636

* Estimated through indirect standardisation under the assumption that the sex-specific, age-specific, race/ethnicity-specific, education-specific and marital status-specific subjects have the same prevalence rates of the corresponding categories in the general adult population observed over the period 2005–2007 (pre-crisis). Expected SP estimates for the period 2009–2010 further take into account the sex-specific and employment status-specific smoking prevalence trends observed during the period 2005–2007. BRFSS, Behavioural Risk Factor Surveillance System; SP, smoking prevalence; SSPR, standardised smoking prevalence ratio.

the US population from employed to unemployed status. Specifically, the number of smokers lost due to the reduction in the number of employed individuals (around 2 million smokers less) was counterbalanced by the increase in the number of smokers among the unemployed (around 3 million more). Clearly, any study that does not take into account the change in the population distribution across different employment statuses cannot entirely capture the impact of the economic crisis on the smoking behaviours of a population. This might explain why our findings are in contrast with the few previous studies suggesting a pro-cyclical relationship between economic downturns and smoking prevalence.^{7 13 19} Moreover, the fact that the economic crisis is responsible for massive involuntary job losses suggests that the relationships found between routine economic cycles and various health outcomes might not be the same under severe economic conditions.^{3–5}

The second issue is related to the smoking prevalence of the ‘new’ unemployed (people likely to have lost their job due to the crisis). In line with all the previous literature,^{32 33} smoking prevalence among unemployed individuals is about 30% higher than the average population. Even considering the declining

trend in smoking prevalence, the exceptionally high smoking prevalence among the unemployed stands out in the post crisis period. Our measure of expected prevalence is based on a precise assumption regarding the smoking prevalence of the many new unemployed that lost their jobs due to the crisis: the new unemployed are assumed to be as likely to smoke as the pre-crisis unemployed. Most of the change in the unemployed prevalence after the crisis is then classified as ‘expected’, which in effect reduces the impact of the crisis (alternatively, we could have assumed that the newly unemployed are people who moved out from the average population with average SPRs). Hence, our analysis took a conservative approach and our estimation should be considered as a lower bound of the impact of the crisis. This confirms even more strongly the counter-cyclical nature of smoking during the crisis.

Why are unemployed individuals (old and new) much more likely to be smokers? Extant literature on the issue remains inconclusive.³³ On the one hand, it is likely that unemployment itself is a significant determinant of smoking behaviour, mainly due to the fact that job loss is a stressful life event^{17 34–36} and that individuals may choose to cope with this stress by lighting up a cigarette or

Table 3 US adult smokers (in thousands) in the pre-crisis (2005–2007) and post-crisis (2009–2010) periods, overall and by employment status. BRFSS, 2005–2007, 2009–2010

	Employment status					
Factor	Employed	Unemployed	Unpaid	Students	Retired	Total
Pre-crisis (2005–2007)						
Population (thousands)*	137 473	11 116	29 821	10 156	36 043	224 609
Smoking prevalence (%)	20.74	34.87	22.50	15.30	10.59	19.8
Number of smokers (thousands)	28 507	3877	6708	1554	3818	44 464
Post-crisis (2009–2010)						
Population (thousands)*	133 625	20 117	30 881	11 325	37 948	233 896
Smoking prevalence (%)	16.86	32.59	21.87	13.21	9.61	17.52
Number of smokers (thousands)	22 529	6553	6757	1495	3644	40 978
Difference (thousands)†	−5978	2677	49	−59	−174	−3485
Due to change in Population						
Expected (due to demographic change in population; A)	1187	161	274	64	158	1844
Unexpected (due to the economic crisis; B)	−2032	3100	49	118	42	1278
Due to change in smoking prevalence						
Expected‡ (due to pre-crisis secular trend; C1)	−3213	246	−108	−288	−137	−3501
Expected§ (due to change in sociodemographic characteristics; C2)	−2275	−92	−85	137	−135	−2450
Unexpected (due to the economic crisis; D)	355	−739	−82	−89	−102	−657
Due to the economic crisis (B+D; thousands)	−1676	2362	−32	29	−60	621

*Average population aged ≥18 years over the period. The distribution of population by employment status was derived by the distribution within the BRFSS sample in the specific period.

†Difference in number of smokers among the two periods.

‡Expected estimates taking into account the employment status-specific smoking prevalence trends observed during the period 2005–2007.

§Estimated under the assumption that the sex-specific, age-specific, race/ethnicity-specific, education-specific and marital status-specific subjects have the same prevalence rates of the corresponding categories in the general adult population observed over the period 2005–2007 (pre-crisis).

giving up their attempt for smoking cessation^{32 35 37–39} or relapsing after experiencing an involuntary job loss.³⁴ Accordingly, even though unemployment reduces income and may increase intention to quit smoking, the rate of cessation failure is higher among those with financial stress.^{40–42} For newly unemployed individuals it is also possible that the additional time not working indoors leads to fewer constraints on smoking uptake and intensity, and consequently less pressure to quit. On the other hand, smoking behaviour might be a cause, more than a consequence, of the change in employment status, for example because employers more frequently hire non-smokers or fire current smokers more frequently.^{43–47} Accordingly, a small but increasing number of employers have recently established policies of no longer hiring tobacco users in the US.⁴⁷ However, during such a massive economic crisis, this second causal pattern might have only a marginal role.

Finally, our findings are of importance from a public health perspective. Since the economic cycle does not seem to have played such an important role in the reduction of smoking prevalence, the reassuring message that in bad economic periods people can at least benefit from low smoking rates should be rejected. On the contrary, our findings implicitly underline the importance of the successful anti-smoking campaigns implemented in the USA.^{48 49} Sustaining anti-tobacco programmes thus remains of primary importance in reducing smoking prevalence in the USA. In this sense, confirming that employment status is an important risk factor for smoking, our results suggest that unemployed individuals should be considered a target population for tobacco control strategies, particularly during economic downturns when a substantial proportion of the population lose their jobs involuntarily. Smoking cessation initiatives should be promoted in this specific population subgroup, where there is evidence that compliance with smoking cessation programmes is more likely.⁵⁰

Possible limitations of the present study include those inherent to the repeated cross-sectional study design. Longitudinal panel data are still needed to understand the causal pathway connecting post-crisis employment status and smoking behaviour. Moreover, it is possible that the economic crisis modified attitudes towards smoking, such as increased social acceptability of smoking. Unfortunately, we cannot analyse this issue in our data by considering the possible temporal changes in under-reporting of tobacco use.⁵¹ Strengths include the extremely large sample size of the BRFSS, which allowed us to employ non-parametric methods to derive the expected smoking prevalence rates, taking into account the combination of a number of sociodemographic characteristics.

In conclusion, the 2008 economic crisis in the USA had a counter-cyclical effect on smoking among unemployed individuals, which was not totally counter-balanced by the pro-cyclical relationship observed among employed individuals. Using indirect standardisation methods and taking into account the demographic changes and the previous secular trends in smoking prevalence, we are able to exclude an overall reduction in smoking prevalence or in the number of smokers due to the economic crisis.

What is already known on this subject

- Most of the few studies analysing the relation between economic fluctuations and smoking prevalence found a pro-cyclical relationship (ie, periods of expanding economic growth results in increased smoking prevalence), suggesting favourable smoking patterns during hard times.
- None of those studies took advantage of a severe economic shock.

What this paper adds

- By considering the change in population composition and smoking prevalence for each employment status, the key contribution of this study is to disentangle how the change in the number of smokers with relation to the economic conditions is derived.
- Using a large US dataset of repeated cross-sectional surveys, we found that the 2008 fiscal crisis had, if anything, a counter-cyclical effect on smoking (ie, the economic crisis results in decreased smoking behaviour) in the general population.
- This relationship is substantial among the unemployed, a specific subgroup which maintains an extremely high smoking prevalence during the crisis, and which should be considered the target population for smoking cessation interventions, particularly in hard economic times.

Acknowledgements The authors would like to thank Dr Cristina Bosetti for her valuable help in the implementation of the joinpoint analysis.

Collaborators Cristina Bosetti.

Contributors SGa and SGh had the original idea for the study; RM conducted extensive literature review of the subject; SGa and RM retrieved the data; all authors wrote the article; SGh and SGa conducted the statistical analysis; all authors gave substantial contributions to conception, design and interpretation of data, and approved the final version of the manuscript.

Funding The work of SGa is partially supported by the Italian Association for Research on Cancer (AIRC; grant number 10068).

Competing interests None.

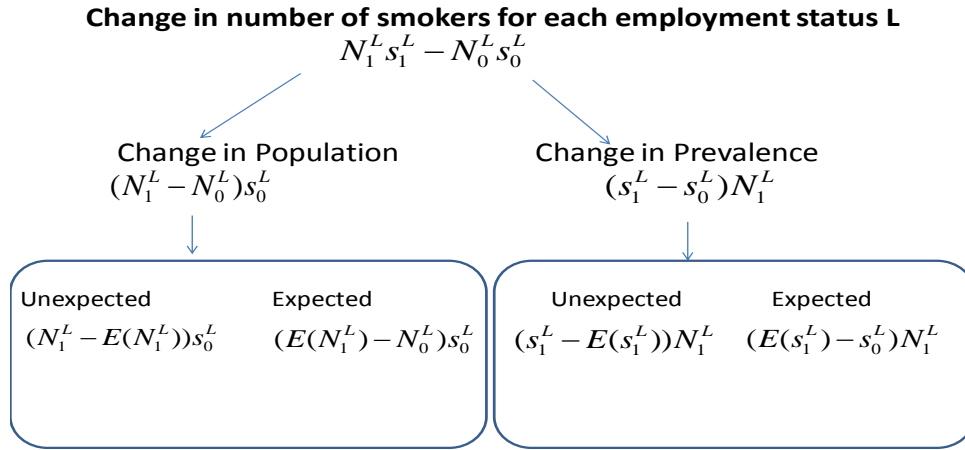
Provenance and peer review Not commissioned; externally peer reviewed.

REFERENCES

- Horton R. The global financial crisis: an acute threat to health. *Lancet* 2009;373:355–6.
- Marmot MG, Bell R. How will the financial crisis affect health? *BMJ* 2009;338:b1314.
- Catalano R, Goldman-Mellor S, Saxton K, et al. The health effects of economic decline. *Annu Rev Public Health* 2011;32:431–50.
- Riva M, Bamba C, Easton S, et al. Hard times or good times? Inequalities in the health effects of economic change. *Int J Public Health* 2011;56:3–5.
- Suhrcke M, Stuckler D. Will the recession be bad for our health? It depends. *Soc Sci Med* 2012;74:647–53.
- Ruhm CJ. Economic conditions and alcohol problems. *J Health Econ* 1995;14:583–603.
- Ruhm CJ. Are recessions good for your health? *Q J Econ* 2000;115:617–50.
- Tapia Granados JA. Recessions and mortality in Spain, 1980–1997. *Eur J Popul* 2005;21:393–422.
- Tapia Granados JA. Macroeconomic fluctuations and mortality in postwar Japan. *Demography* 2008;45:323–43.
- Tapia Granados JA, Ionides E. Mortality and macroeconomic fluctuations in contemporary Sweden. *Eur J Popul* 2011;27:157–84.
- Freeman DG. A note on 'Economic conditions and alcohol problems'. *J Health Econ* 1999;18:661–70.
- Ruhm CJ, Black WE. Does drinking really decrease in bad times? *J Health Econ* 2002;21:659–78.
- Ruhm CJ. Healthy living in hard times. *J Health Econ* 2005;24:341–63.
- Stuckler D, Basu S, Suhrcke M, et al. The public health effect of economic crises and alternative policy responses in Europe: an empirical analysis. *Lancet* 2009;374:315–23.
- Stuckler D, Basu S, Suhrcke M, et al. Effects of the 2008 recession on health: a first look at European data. *Lancet* 2011;378:124–5.
- Luo F, Florence C, Quispe-Agnoli M, et al. Impact of business cycles on US suicide rates, 1928–2007. *Am J Public Health* 2011;101:1139–46.
- Sargent-Cox K, Butterworth P, Anstey KJ. The global financial crisis and psychological health in a sample of Australian older adults: a longitudinal study. *Soc Sci Med* 2011;73:1105–12.
- Dave DM, Kelly IR. How does the business cycle affect eating habits? *Soc Sci Med* 2012;74:254–62.
- Charles KK, Decicca P. Local labor market fluctuations and health: is there a connection and for whom? *J Health Econ* 2008;27:1532–50.
- Martin-Moreno JM, Alfonso-Sanchez JL, Harris M, et al. The effects of the financial crisis on primary prevention of cancer. *Eur J Cancer* 2010;46:2525–33.
- Arkes J. How does youth cigarette use respond to weak economic periods? Implications for the current economic crisis. *Subst Use Misuse* 2012;47:375–82.
- Gallus S, Tramacere I, Padfichi R, et al. Smoking in Italy 2008–2009: a rise in prevalence related to the economic crisis? *Prev Med* 2011;52:182–3.
- Gallus S, Muttarak R, Martinez-Sanchez JM, et al. Smoking prevalence and smoking attributable mortality in Italy, 2010. *Prev Med* 2011;52:434–8.
- Centers for Disease Control and Prevention (CDC). Cigarette smoking among adults and trends in smoking cessation—United States, 2008. *MMWR Morb Mortal Wkly Rep* 2009;58:1227–32.
- Centers for Disease Control and Prevention (CDC). Behavioral Risk Factor Surveillance System. Prevalence and Trends Data. <http://apps.nccd.cdc.gov/brfss/index.asp> (last accessed 27 Jun 2013).
- Centers for Disease Control and Prevention (CDC). Behavioral risk factor surveillance system survey questionnaire. Atlanta, Georgia: U.S. Department of Health and Human Services, Centers for Disease Control and Prevention, 2005–2010.
- Centers for Disease Control and Prevention (CDC). Behavioral risk factor surveillance system survey questionnaire. Atlanta, Georgia: U.S. Department of Health and Human Services, Centers for Disease Control and Prevention, 2005–2010.
- National Cancer Institute (NCI). Joinpoint Regression Program, Version 3.0. 2005. <http://srab.cancer.gov/joinpoint> (last accessed 11 Jul 2012).
- Bosetti C, Bertuccio P, Levi F, et al. Cancer mortality in the European Union, 1970–2003, with a joinpoint analysis. *Ann Oncol* 2008;19:631–40.
- Kim HJ, Fay MP, Feuer EJ, et al. Permutation tests for joinpoint regression with applications to cancer rates. *Stat Med* 2000;19:335–51.
- U.S. Census Bureau. Population Estimates. <http://www.census.gov/popest/data/intercensal/national/nat2010.html> (last accessed 24 Apr 2013).
- Fagan P, Shavers V, Lawrence D, et al. Cigarette smoking and quitting behaviors among unemployed adults in the United States. *Nicotine Tob Res* 2007;9:241–8.
- Henkel D. Unemployment and substance use: a review of the literature (1990–2010). *Curr Drug Abuse Rev* 2011;4:4–27.
- Falba T, Teng HM, Sindelar JL, et al. The effect of involuntary job loss on smoking intensity and relapse. *Addiction* 2005;100:1330–9.
- Kriegbaum M, Larsen AM, Christensen U, et al. Reduced probability of smoking cessation in men with increasing number of job losses and partnership breakdowns. *J Epidemiol Community Health* 2011;65:511–16.
- Nandi A, Galea S, Tracy M, et al. Job loss, unemployment, work stress, job satisfaction, and the persistence of posttraumatic stress disorder one year after the September 11 attacks. *J Occup Environ Med* 2004;46:1057–64.
- De Vogli R, Santinello M. Unemployment and smoking: does psychosocial stress matter? *Tob Control* 2005;14:389–95.
- Hammarstrom A, Janlert U. Unemployment—an important predictor for future smoking: a 14-year follow-up study of school leavers. *Scand J Public Health* 2003;31:229–32.
- Kendzor DE, Reitzel LR, Mazas CA, et al. Individual- and area-level unemployment influence smoking cessation among African Americans participating in a randomized clinical trial. *Soc Sci Med* 2012;74:1394–401.
- Siahpush M, Borland R, Scollo M. Smoking and financial stress. *Tob Control* 2003;12:60–6.
- Siahpush M, Carlin JB. Financial stress, smoking cessation and relapse: results from a prospective study of an Australian national sample. *Addiction* 2006;101:121–7.
- Siahpush M, Yong HH, Borland R, et al. Smokers with financial stress are more likely to want to quit but less likely to try or succeed: findings from the International Tobacco Control (ITC) Four Country Survey. *Addiction* 2009;104:1382–90.
- Chandola T, Head J, Bartley M. Socio-demographic predictors of quitting smoking: how important are household factors? *Addiction* 2004;99:770–7.
- Jusot F, Khlat M, Rochereau T, et al. Job loss from poor health, smoking and obesity: a national prospective survey in France. *J Epidemiol Community Health* 2008;62:332–7.
- Leino-Arjas P, Liira J, Mutanen P, et al. Predictors and consequences of unemployment among construction workers: prospective cohort study. *BMJ* 1999;319:600–5.
- Ryan J, Zwierling C, Jones M. Cigarette smoking at hire as a predictor of employment outcome. *J Occup Environ Med* 1996;38:928–33.
- Asch DA, Muller RW, Volpp KG. Conflicts and compromises in not hiring smokers. *N Engl J Med* 2013;368:1371–3.
- Levy DT, Chaloupka F, Gitchell J. The effects of tobacco control policies on smoking rates: a tobacco control scorecard. *J Public Health Manag Pract* 2004;10:338–53.
- Warner KE, Mendez D. Tobacco control policy in developed countries: yesterday, today, and tomorrow. *Nicotine Tob Res* 2010;12:876–87.
- Lee CS, Hayes RB, McQuaid EL, et al. Predictors of retention in smoking cessation treatment among Latino smokers in the Northeast United States. *Health Educ Res* 2010;25:687–97.
- Gallus S, Tramacere I, Boffetta P, et al. Temporal changes of under-reporting of cigarette consumption in population-based studies. *Tob Control* 2011;20:34–9.

ON-LINE APPENDIX: THE MODEL

To estimate a change in the number of smokers following the economic crisis, we propose a novel method. The general scheme applied is as follows:



where:

- N_0 = population in the pre-crisis period
- N_1 = population in the post-crisis period
- N_1^L = number of population in employment status L in the post-crisis period;
- s_1^L = smoking prevalence for employment status L in the post-crisis period;
- N_0^L = number of population in employment status L in the pre-crisis period;
- s_0^L = smoking prevalence for employment status L in the pre-crisis period
- $E(N_1^L) = (N_0^L / N_0) N_1$
- $E(s_1^L) = s_0^L$ decreased by the trend and adjusted by socioeconomic characteristics.