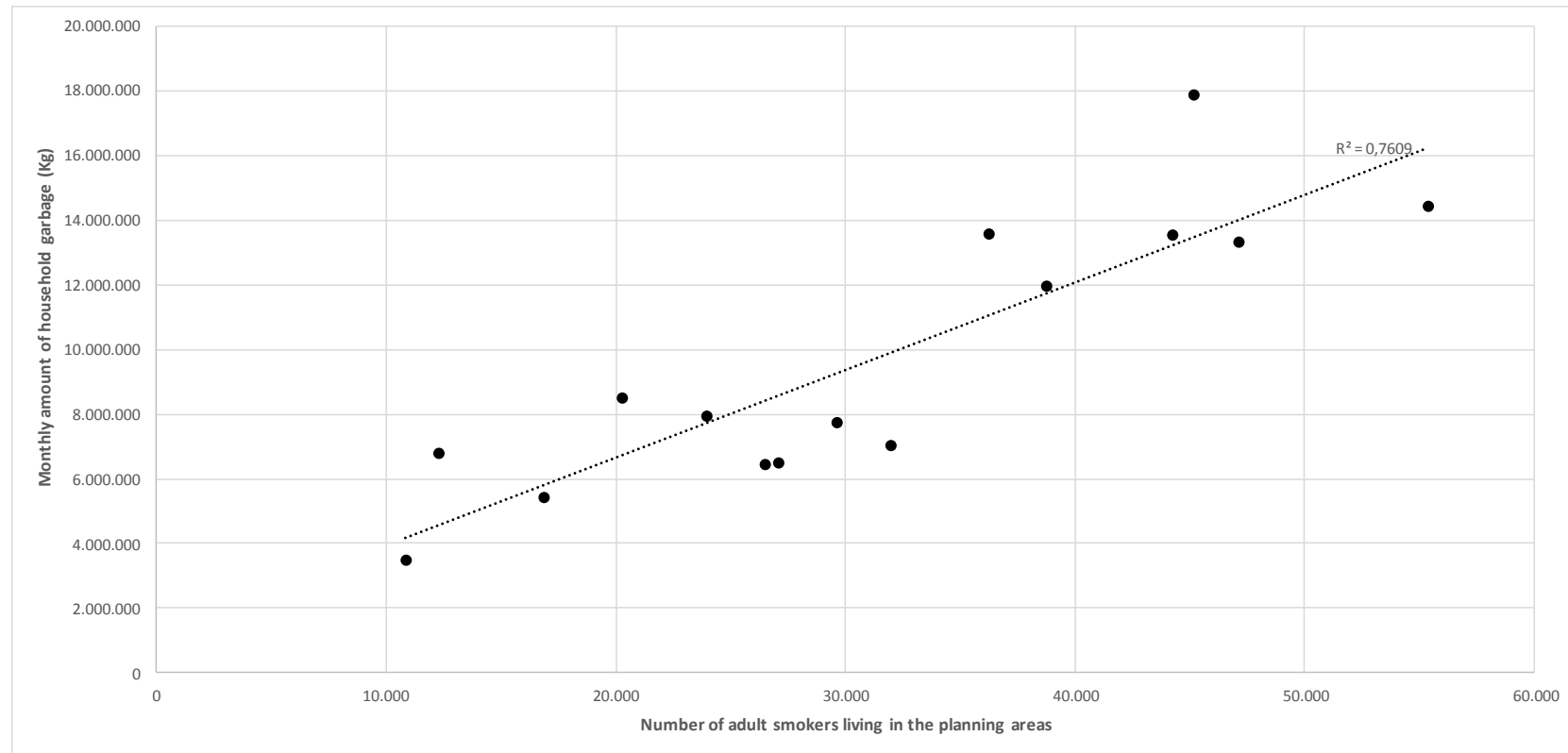


Supplementary Figure 1. Distribution of the average monthly amount of household garbage collected and the number of adult smokers living in the planning areas<sup>1,2</sup>. Rio de Janeiro city, 2018.



<sup>1</sup> Each of the 15 planning areas of the city of Rio de Janeiro are comprised of geographically-bounded neighborhoods

<sup>2</sup> Pearson correlation coefficient: 0.87