



Figure S1.a. Sukun Premiere (abbreviation: SP) kretek: pack, opened stick, and unopened stick.

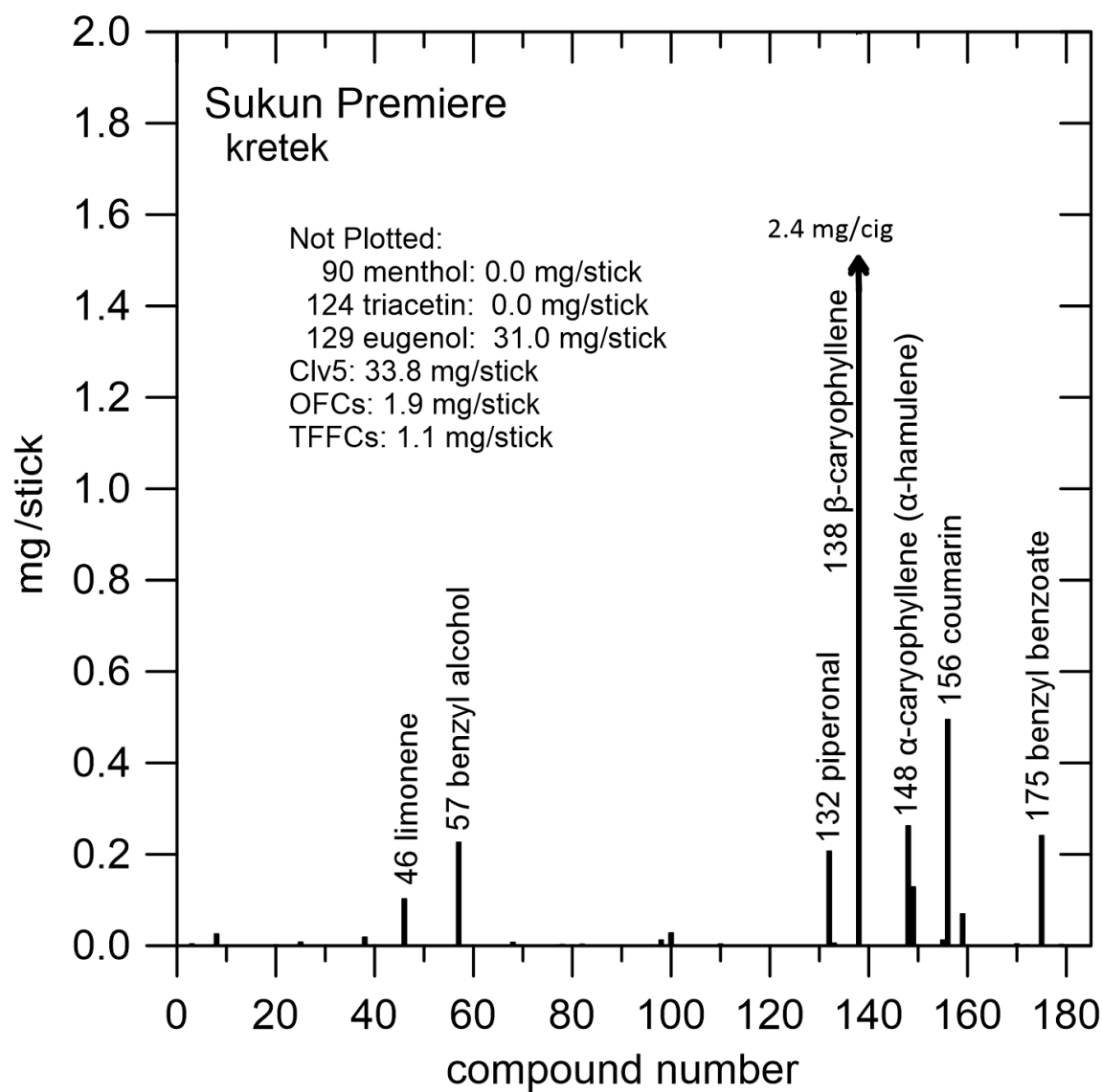


Figure S1.b. Sukun Premiere (abbreviation: SP) kretek; compound bar plot. OFCs = total flavor chemicals - (Clv5 + menthol + triacetin + triethyl citrate).



Figure S2.a. Dji Sam Soe (abbreviation: DSS) kretek; pack, opened stick, and unopened stick.

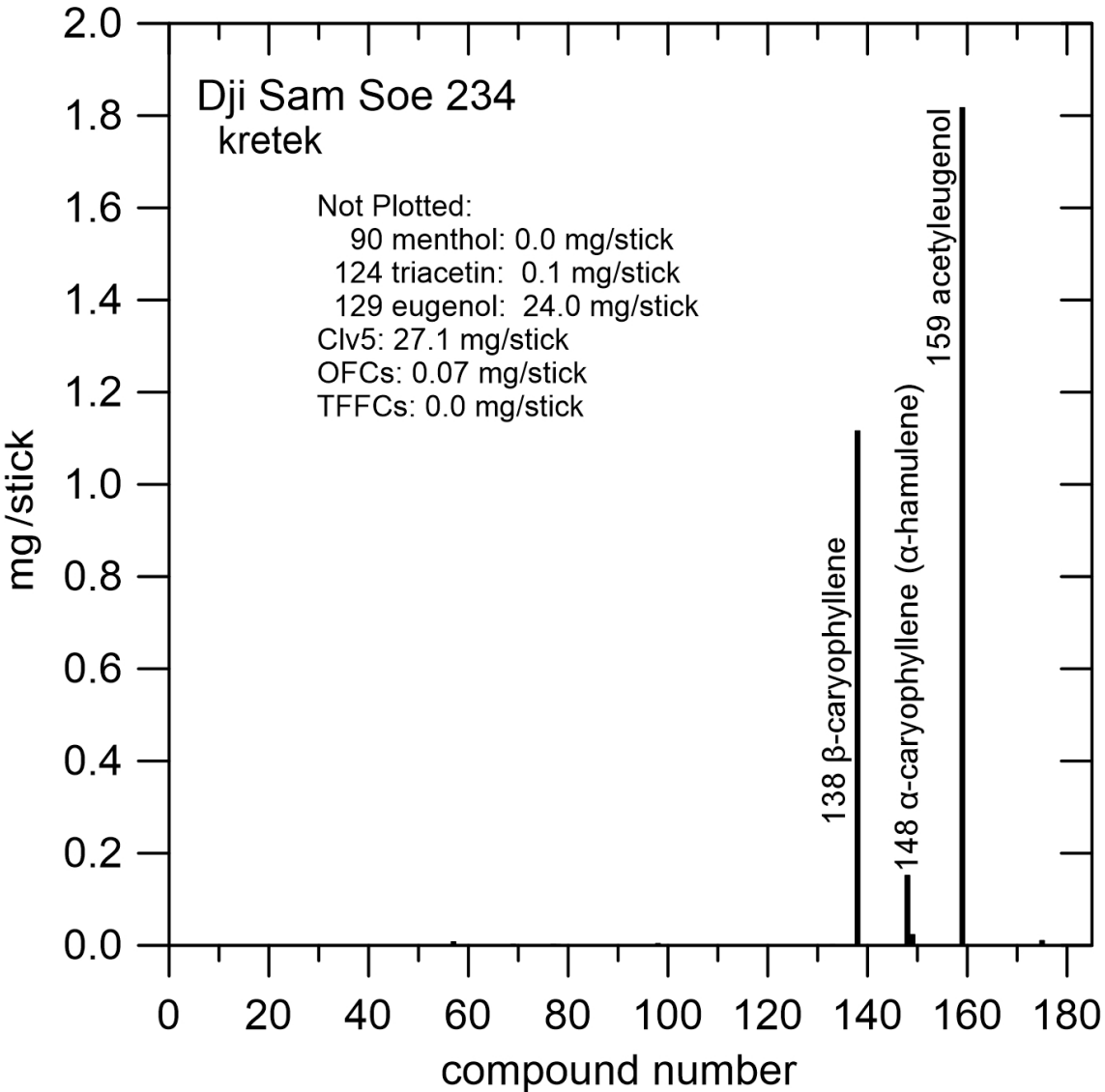


Figure S2.b. Dji Sam Soe 234 (abbreviation: DSS) kretek; compound bar plot. OFCs = total flavor chemicals - (Clv5 + menthol + triacetin + triethyl citrate).



Figure S3.a. Apache (abbreviation: AP) kretek; pack, opened filter, and un-opened stick.

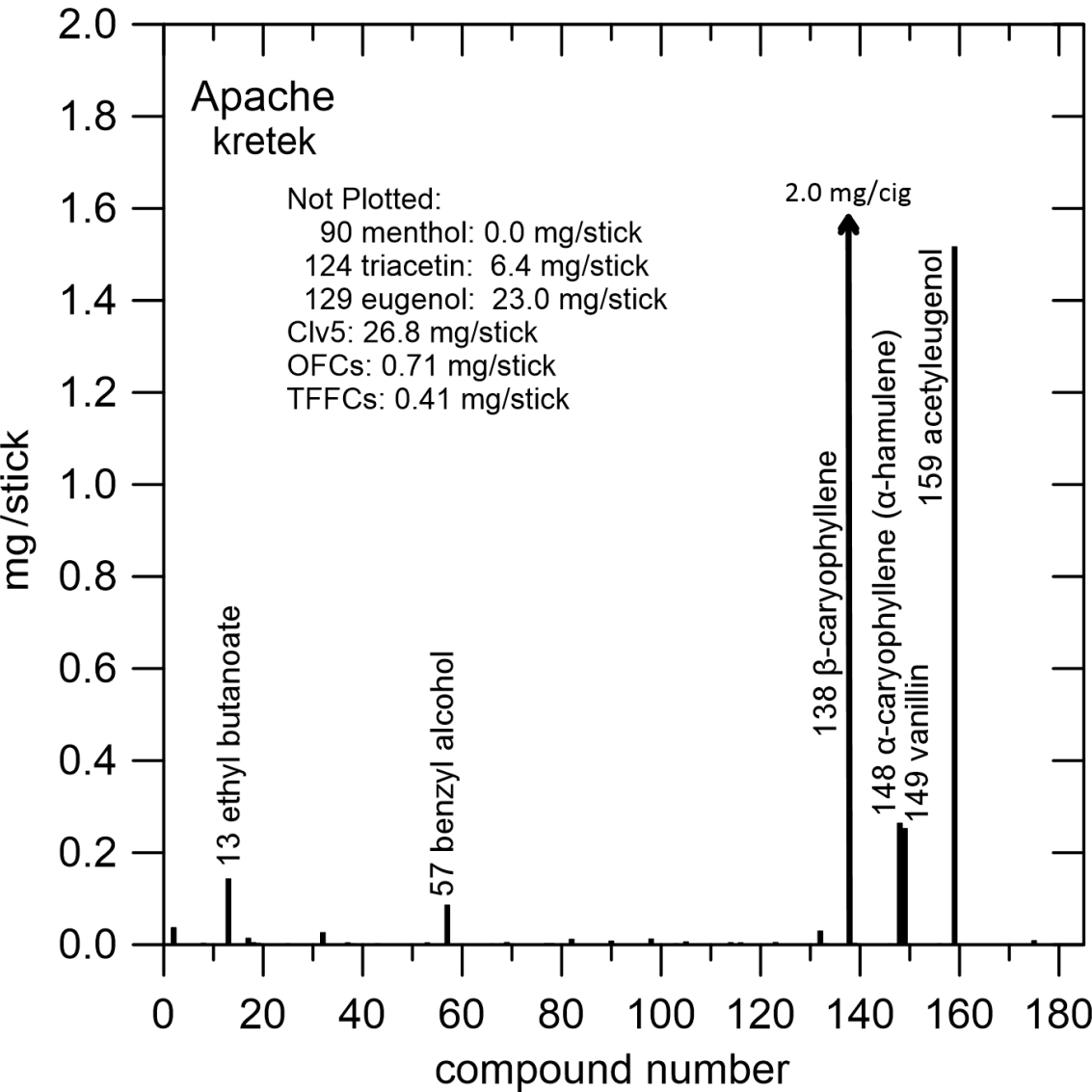


Figure S3.b. Apache (abbreviation: AP) kretek; compound bar plot. OFCs = total flavor chemicals - (Clv5 + menthol + triacetin + triethyl citrate).



Figure S4.a. Xplore Cacao (abbreviation: XC) kretek, pack, opened filter, and unopened stick.

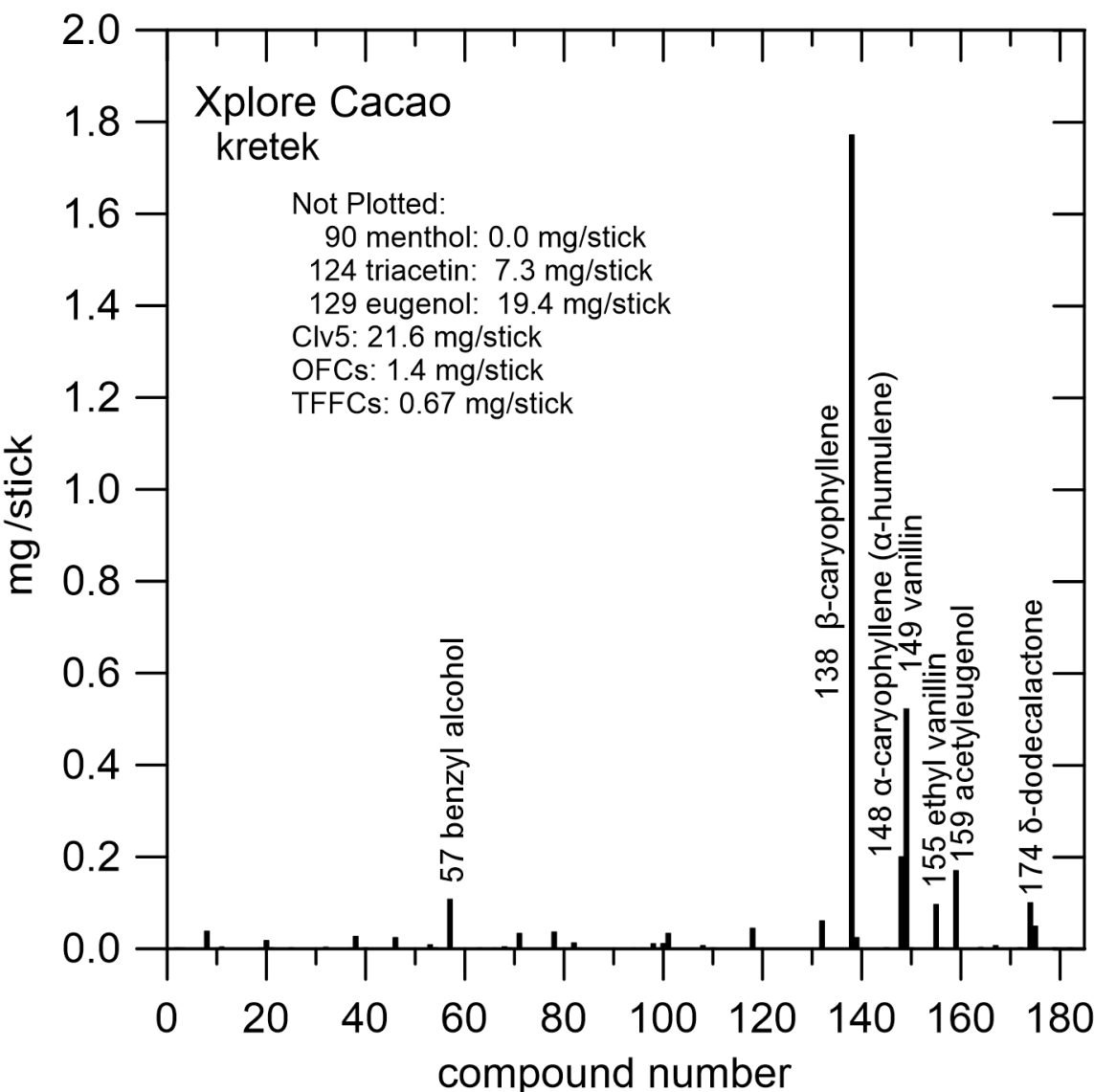


Figure S4.b. Xplore Cacao (abbreviation: XC) kretek; compound bar plot. OFCs = total flavor chemicals - (Clv5 + menthol + triacetin + triethyl citrate).



Figure S5.a. Surya Professional (abbreviation: SPF) kretek; pack, opened filter, and unopened stick.

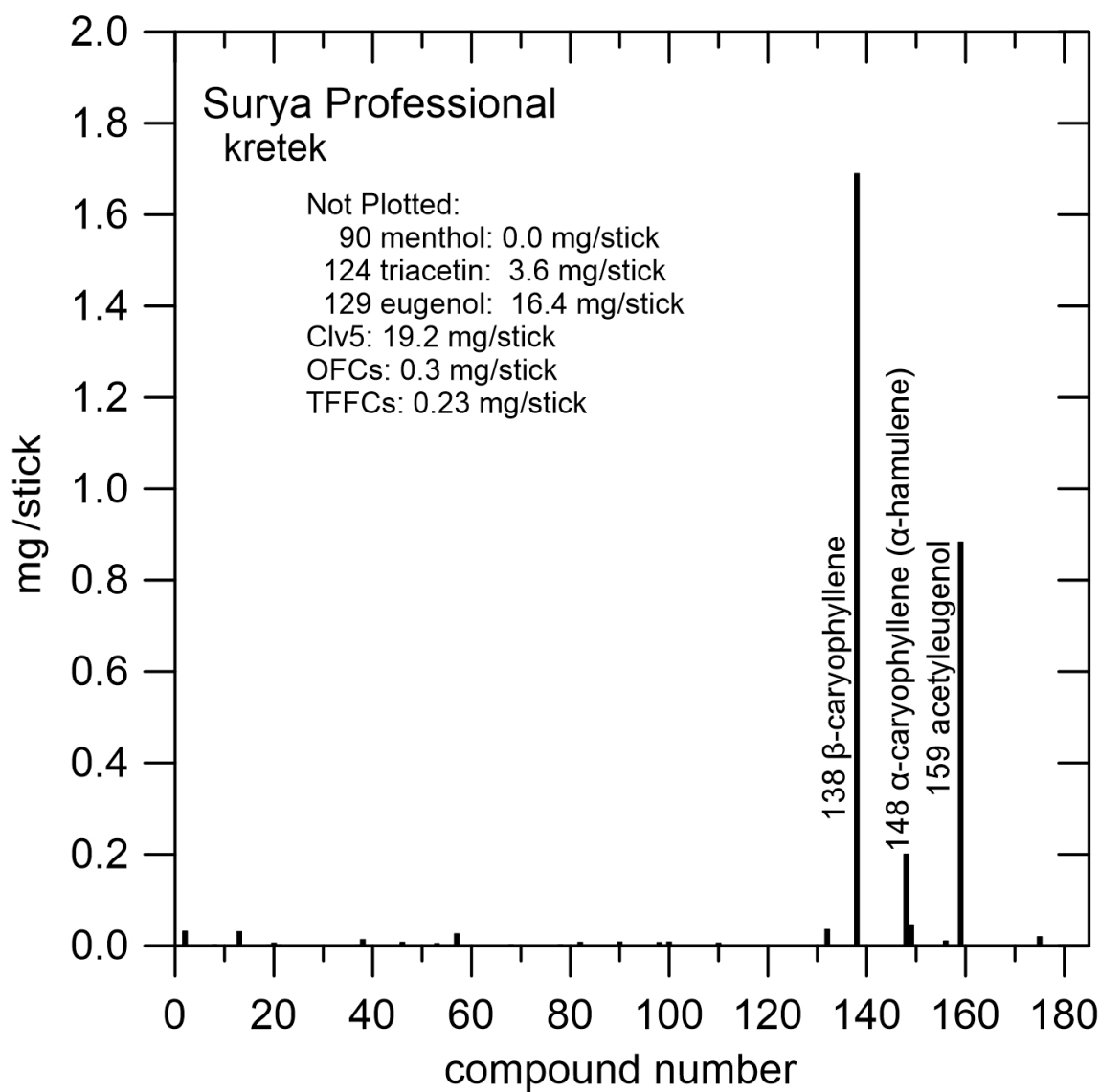


Figure S5.b. Surya Professional (abbreviation: SPF) kretek; compound bar plot. OFCs = total flavor chemicals - (Clv5 + menthol + triacetin + triethyl citrate).



Figure S6.a. LA Menthol (abbreviation: LAM) kretek; pack, opened filter, and unopened stick.

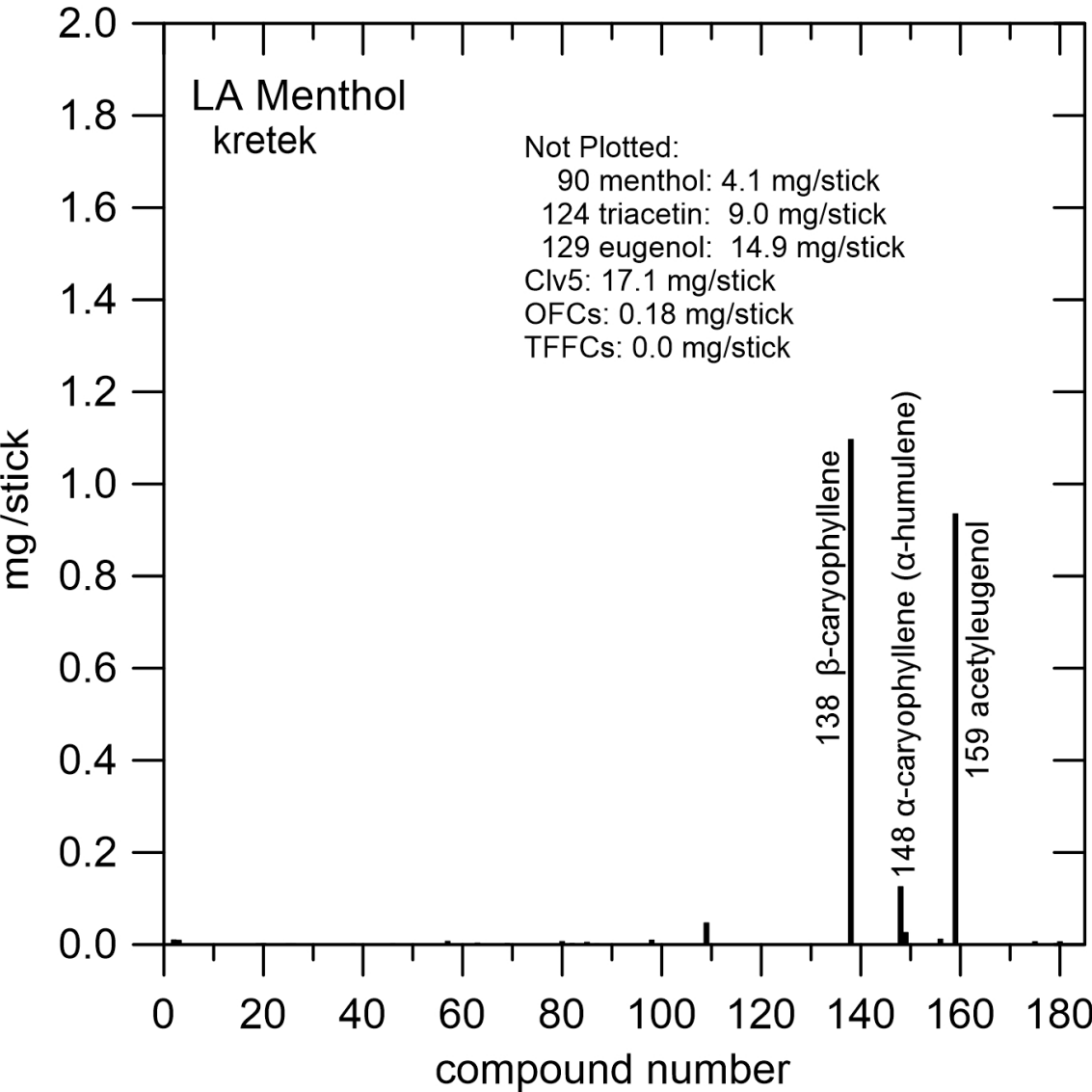


Figure S6.b. LA Menthol (abbreviation: LAM) kretek; compound bar plot. OFCs = total flavor chemicals - (Clv5 + menthol + triacetin + triethyl citrate).



Figure S7.a. ESSE Honey Pop (abbreviation: EHP) kretek; pack, opened filter, and unopened stick.

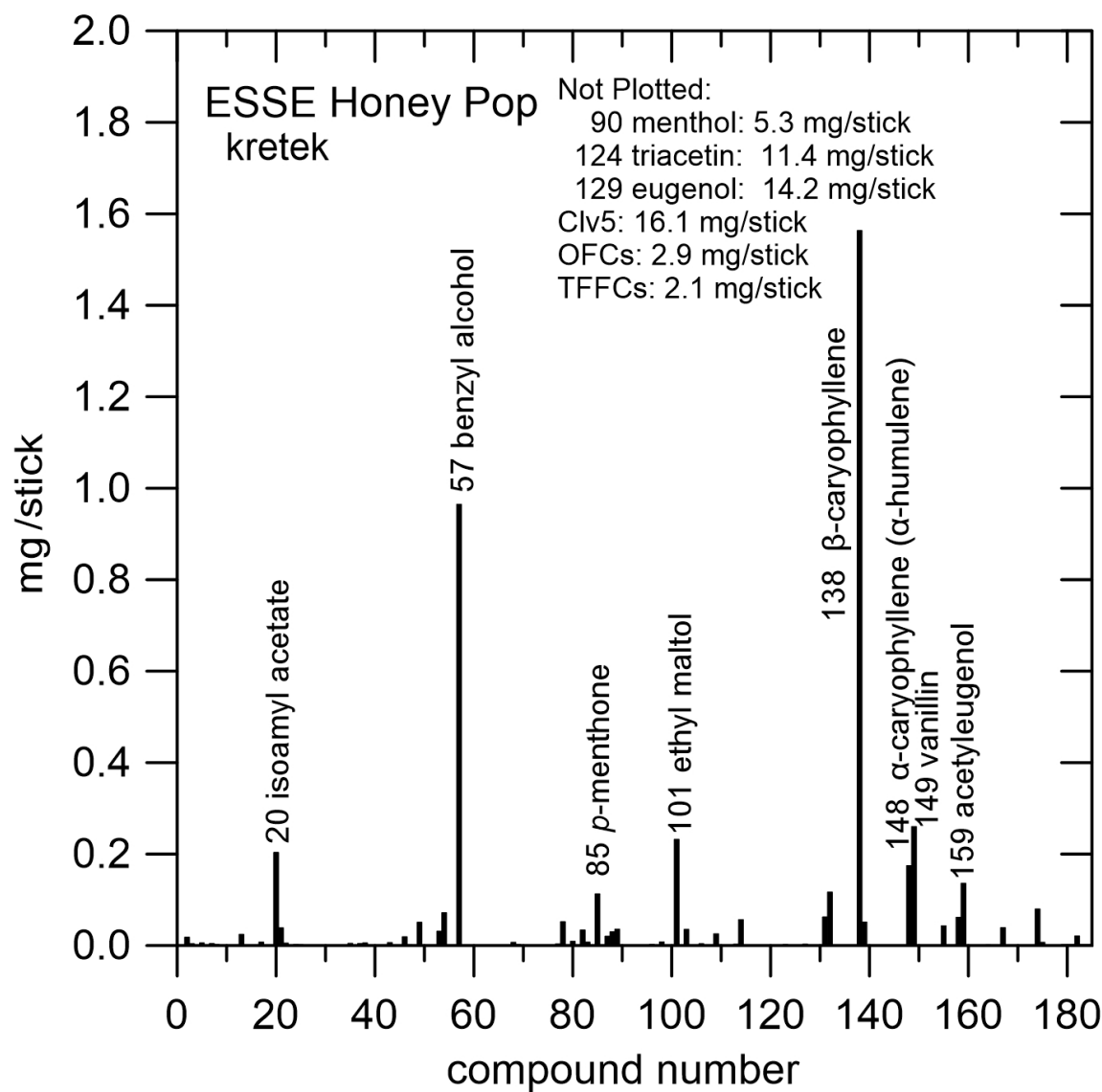
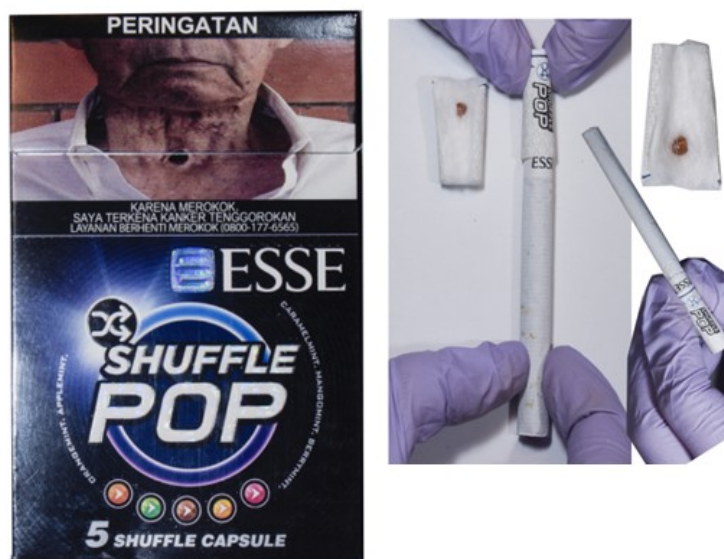


Figure S7.b. ESSE Honey Pop (abbreviation: EHP) kretek; compound bar plot. OFCs = total flavor chemicals - (Clv5 + menthol + triacetin + triethyl citrate).



One capsule in filter (green, orange, or brown – brown shown).

Figure S8.a. ESSE Shuffle Pop – Sampler Green (abbreviation: ESP-S/Gr) kretek; pack, opened filter, and un-opened stick.

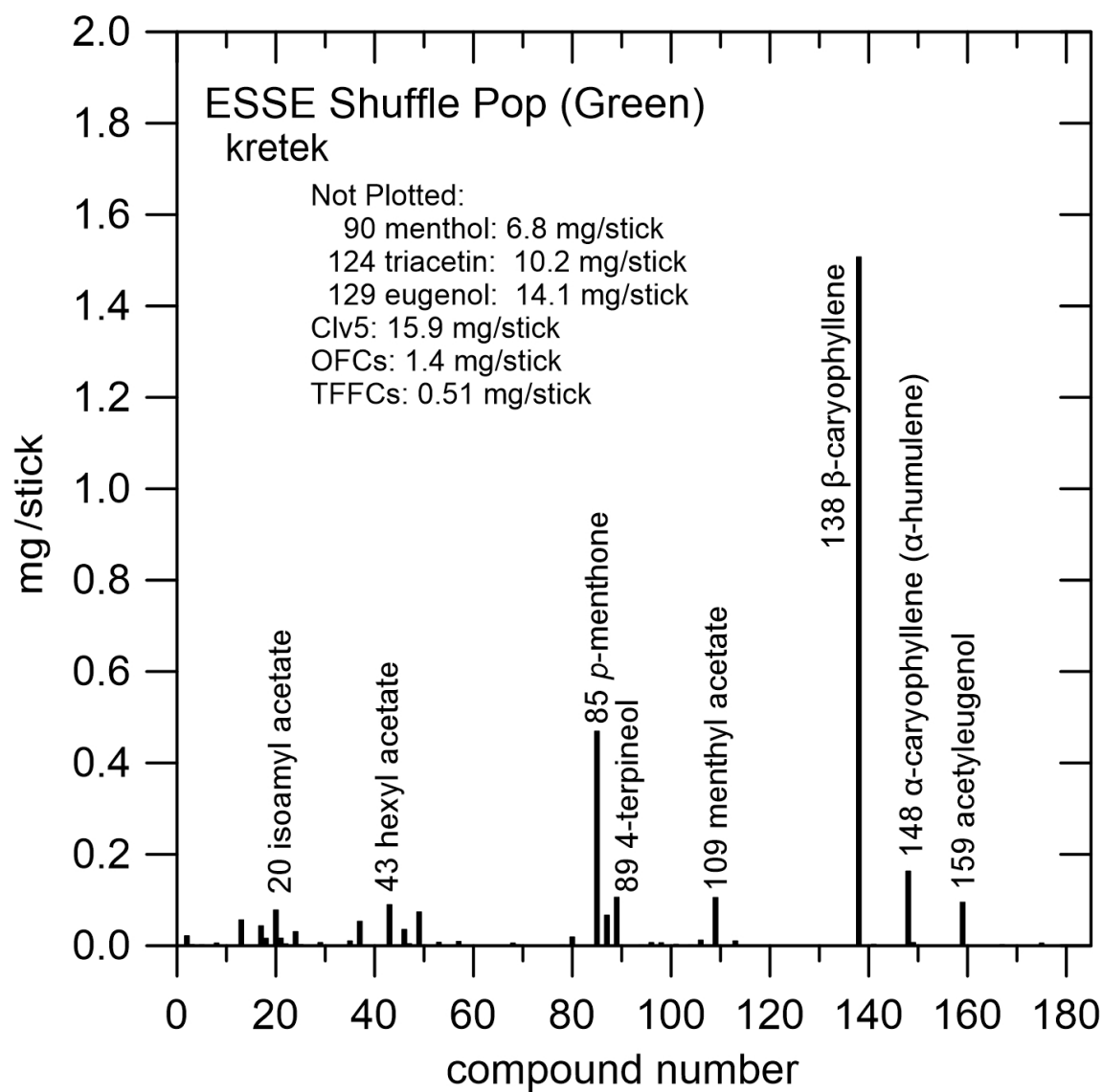
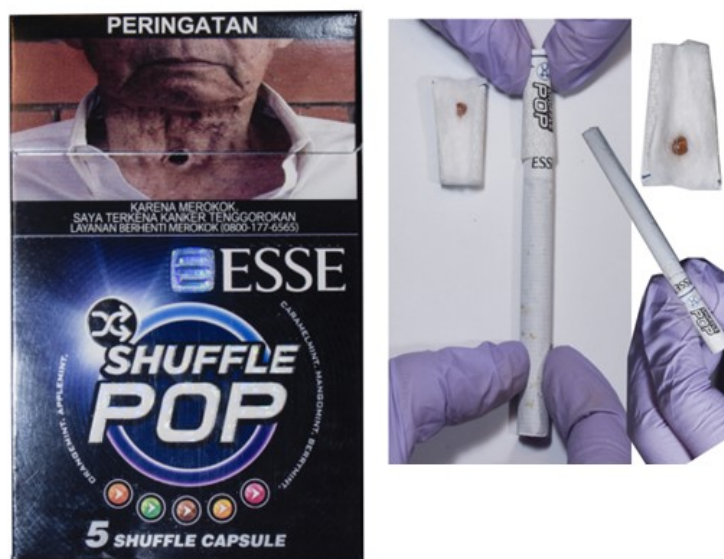


Figure S8.b. ESSE Shuffle Pop – Sampler Green (abbreviation: ESP-S/Gr) kretek; compound bar plot. OFCs = total flavor chemicals - (Clv5 + menthol + triacetin + triethyl citrate).



One capsule in filter (green, orange, or brown – brown shown).

Figure S9.a. ESSE Shuffle Pop – Sampler Orange (abbreviation: ESP-S/Or) kretek; pack, opened filter, and un-opened stick.

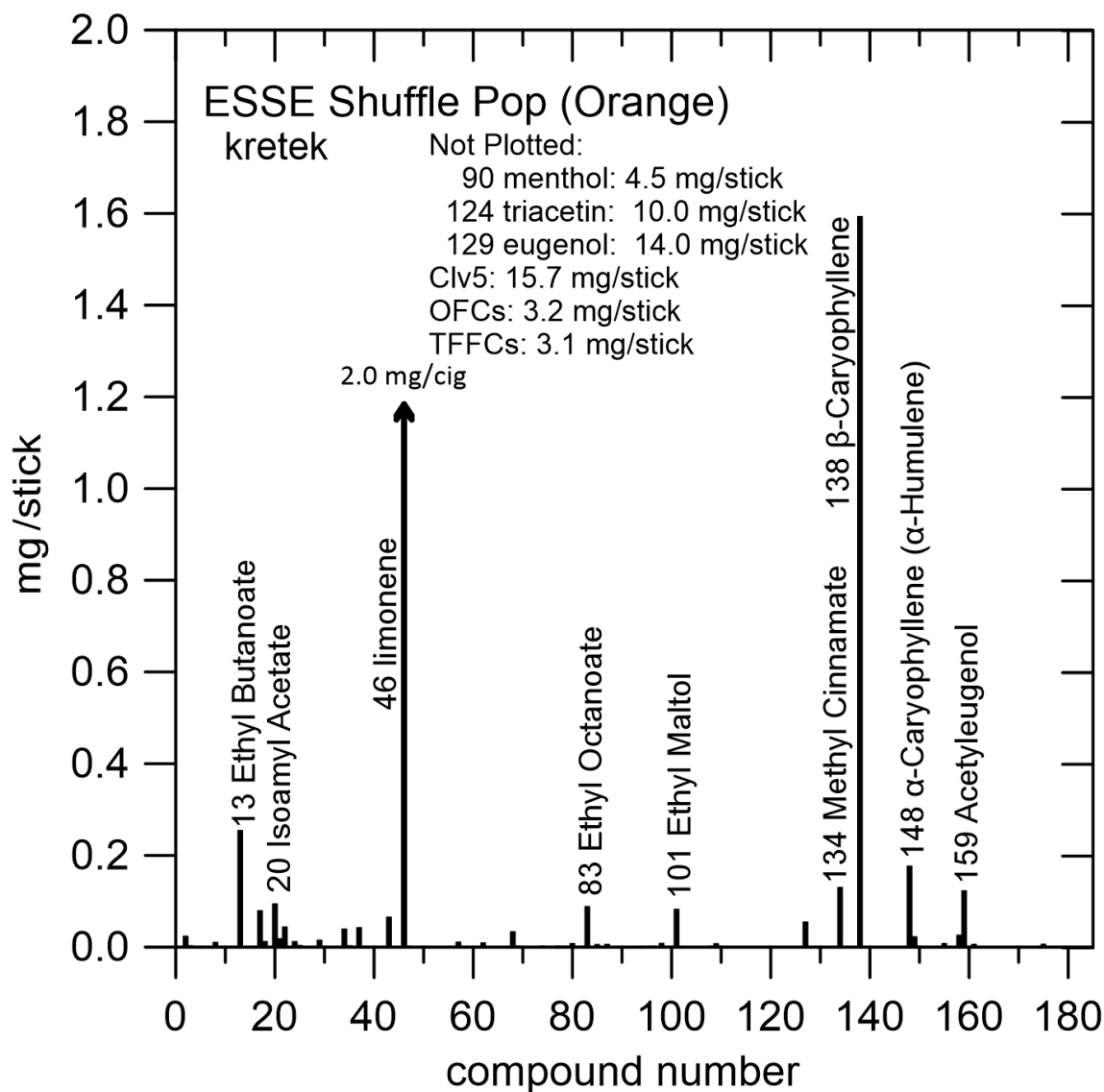


Figure S9.b. ESSE Shuffle Pop – Sampler Orange (abbreviation: ESP-S/Or) kretek; compound bar plot. OFCs = total flavor chemicals - (Clv5 + menthol + triacetin + triethyl citrate).



Figure S10.a. Gudang Garam International (abbreviation: GGI) kretek; pack, opened filter, and un-opened stick.

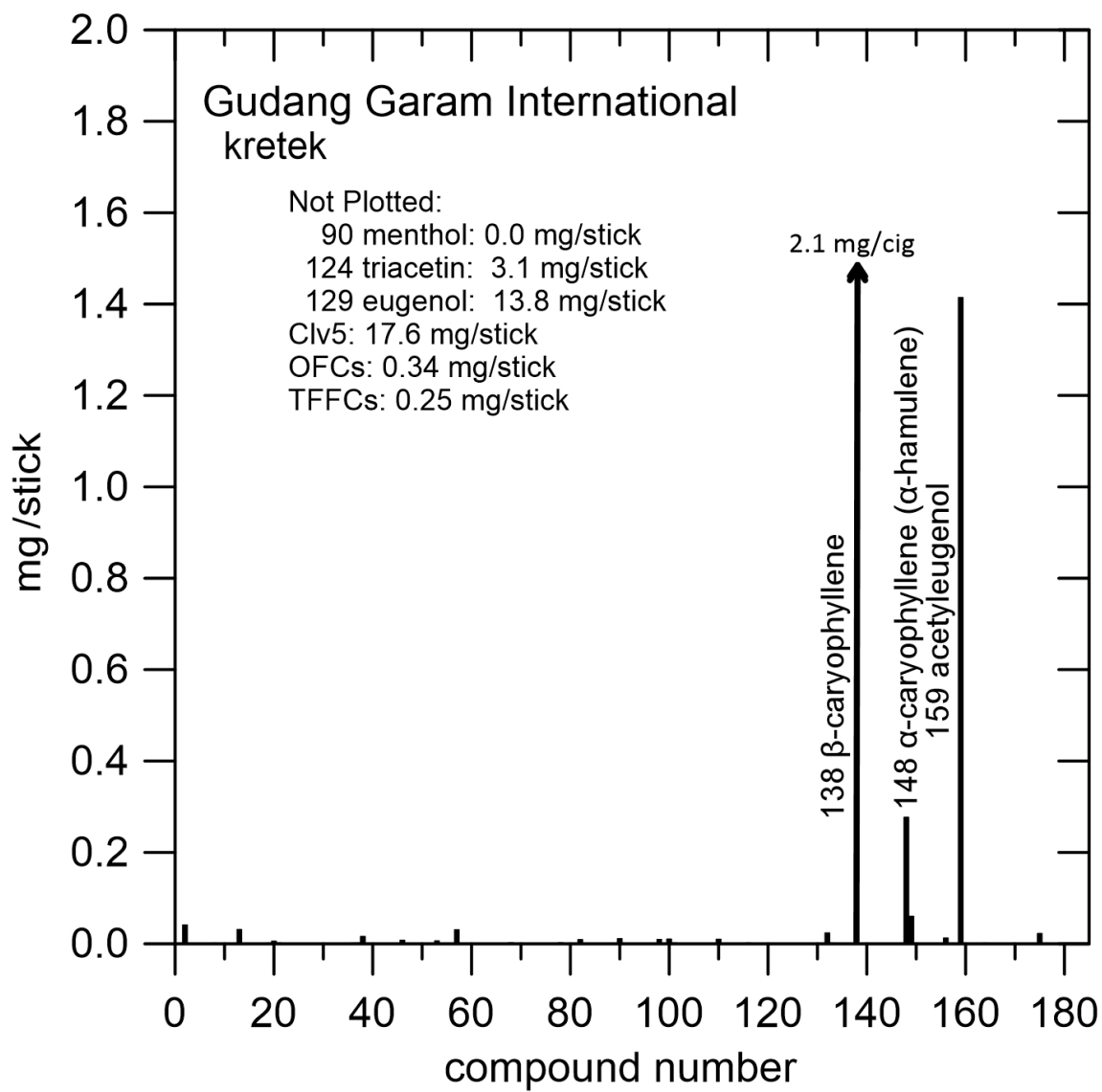
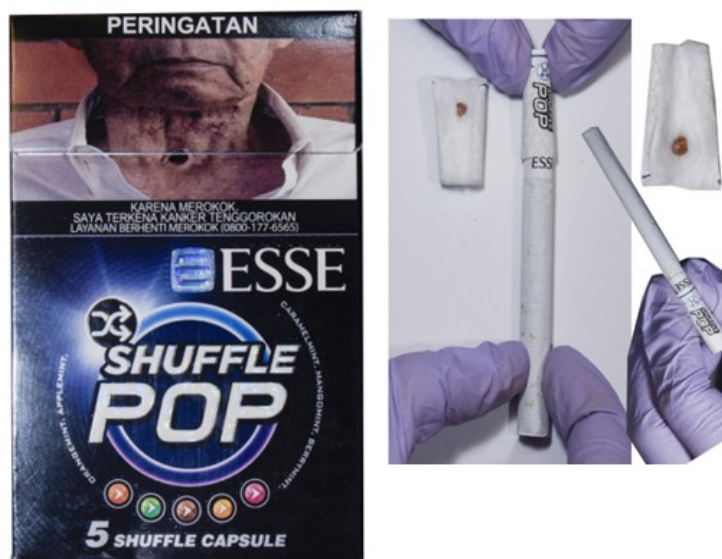


Figure S10.b. Gudang Garam International (abbreviation: GGI) kretek; compound bar plot. OFCs = total flavor chemicals - (Clv5 + menthol + triacetin + triethyl citrate).



One capsule in filter (green, orange, or brown – brown shown).

Figure S11.a. ESSE Shuffle Pop – Sampler Brown (abbreviation: ESP-S/Br) kretek; pack, opened filter, and un-opened stick.

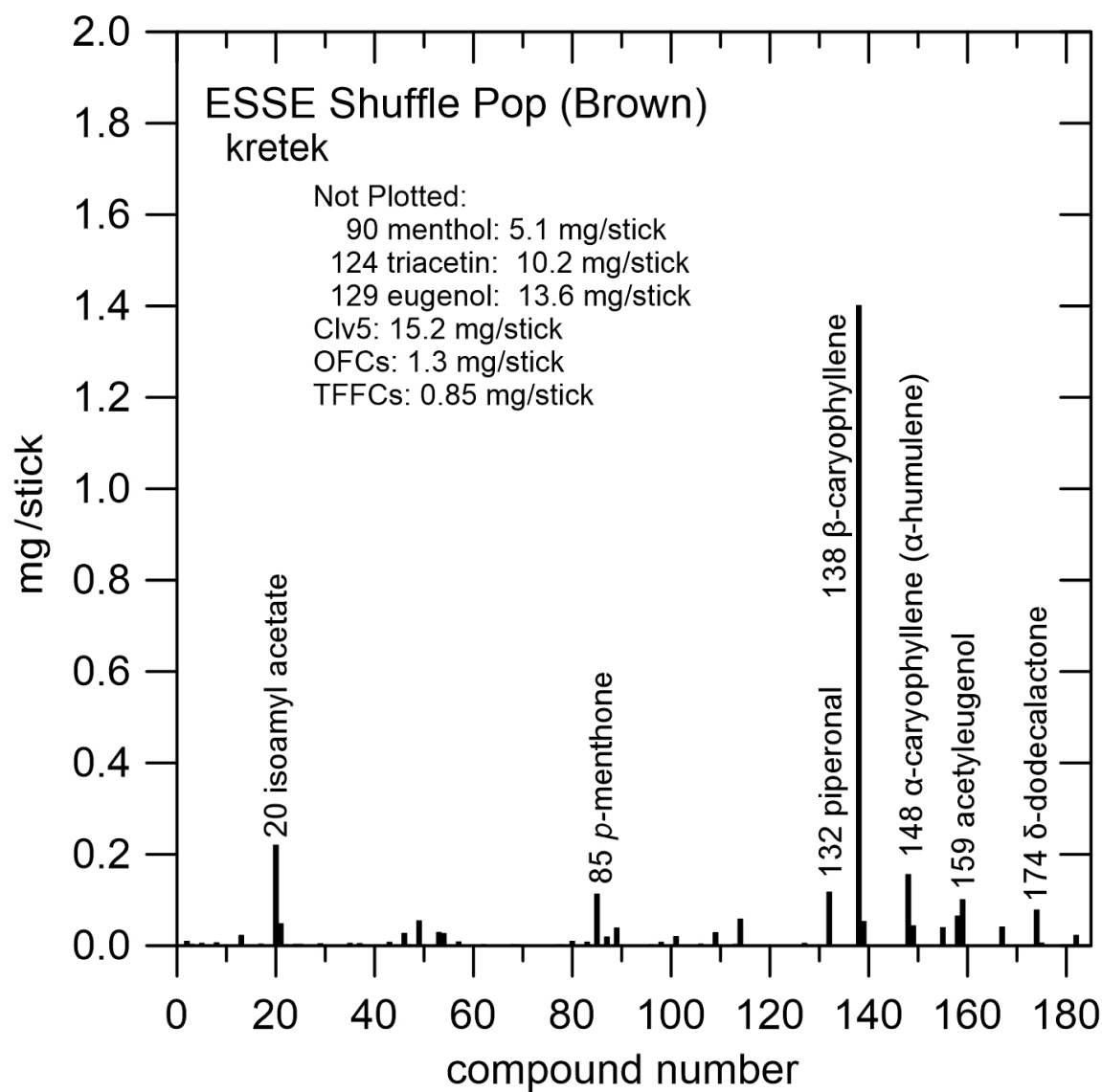


Figure S11.b. ESSE Shuffle Pop – Sampler Brown (abbreviation: ESP-S/Br) kretek; compound bar plot. OFCs = total flavor chemicals - (Clv5 + menthol + triacetin + triethyl citrate).



Figure S12.a. ESSE Punch Pop (abbreviation: EPP) kretek; pack, opened filter, and unopened stick.

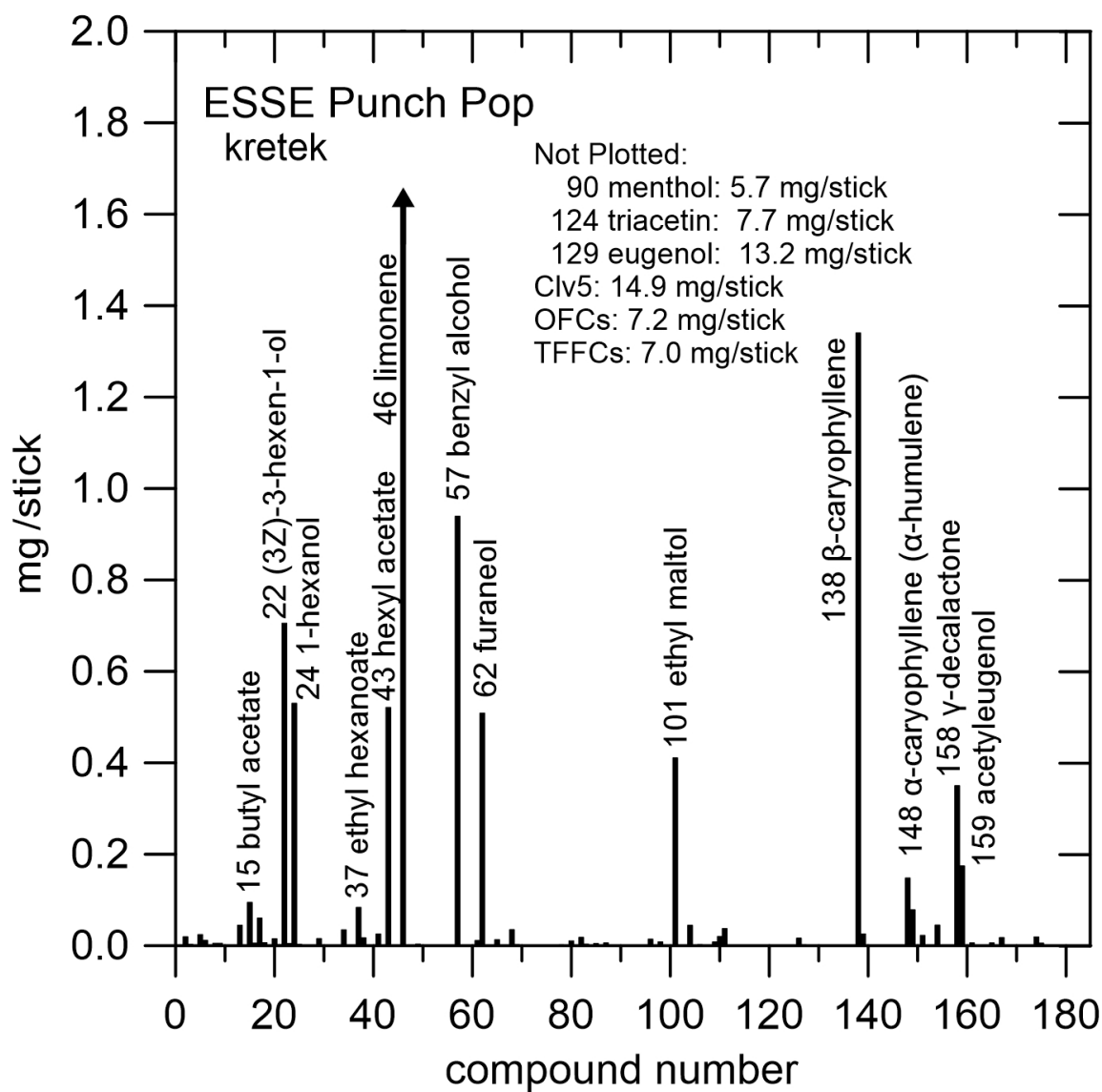


Figure S12.b. ESSE Punch Pop (abbreviation: EPP) kretek; compound bar plot. OFCs = total flavor chemicals - (Clv5 + menthol + triacetin + triethyl citrate).



Figure S13.a. LA Ice (abbreviation: LAI) kretek; pack, opened filter, and un-opened stick.

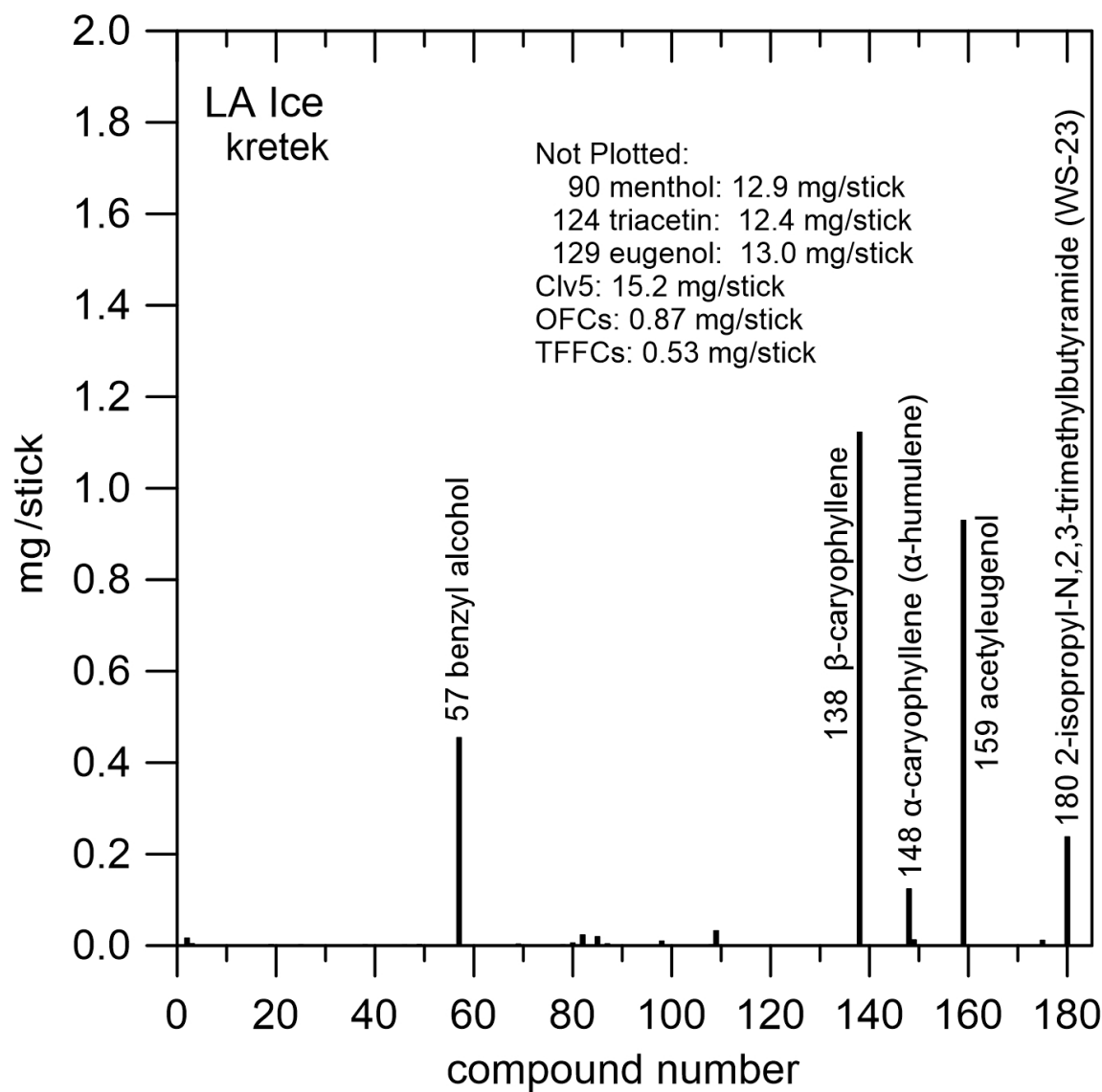


Figure S13.b. LA Ice (abbreviation: LAI) kretek; compound bar plot. OFCs = total flavor chemicals - (Clv5 + menthol + triacetin + triethyl citrate).



Figure S14.a. Sampoerna A Mild Menthol Burst (abbreviation: SAMB) kretek; pack, opened filter, and un-opened stick.

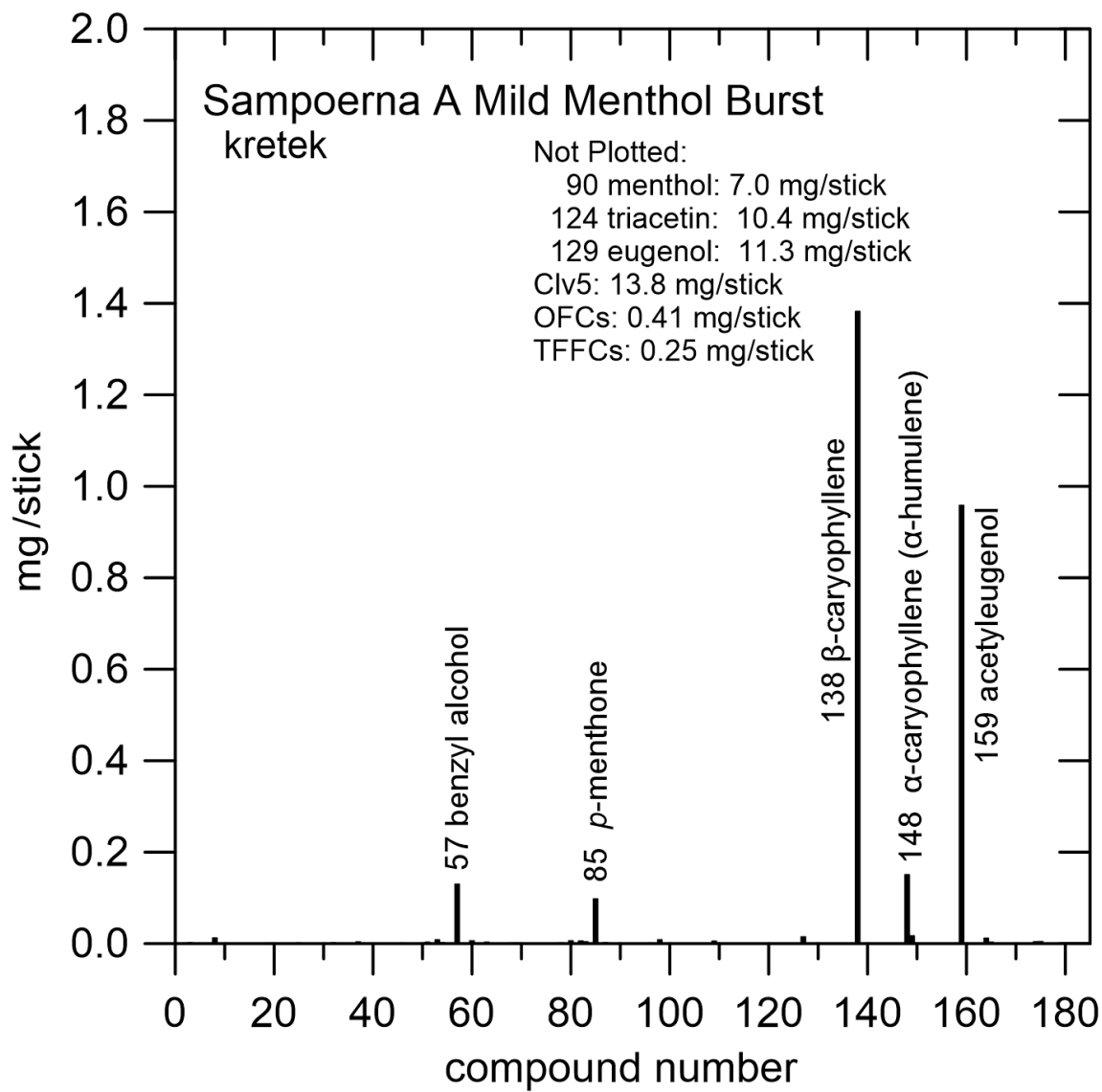


Figure S14.b. Sampoerna A Mild Menthol Burst (abbreviation: SAMB) kretek; compound bar plot. OFCs = total flavor chemicals - (Clv5 + menthol + triacetin + triethyl citrate).



Figure S15.a. ESSE Café (abbreviation: EC) kretek; pack, opened filter, and un-opened stick.

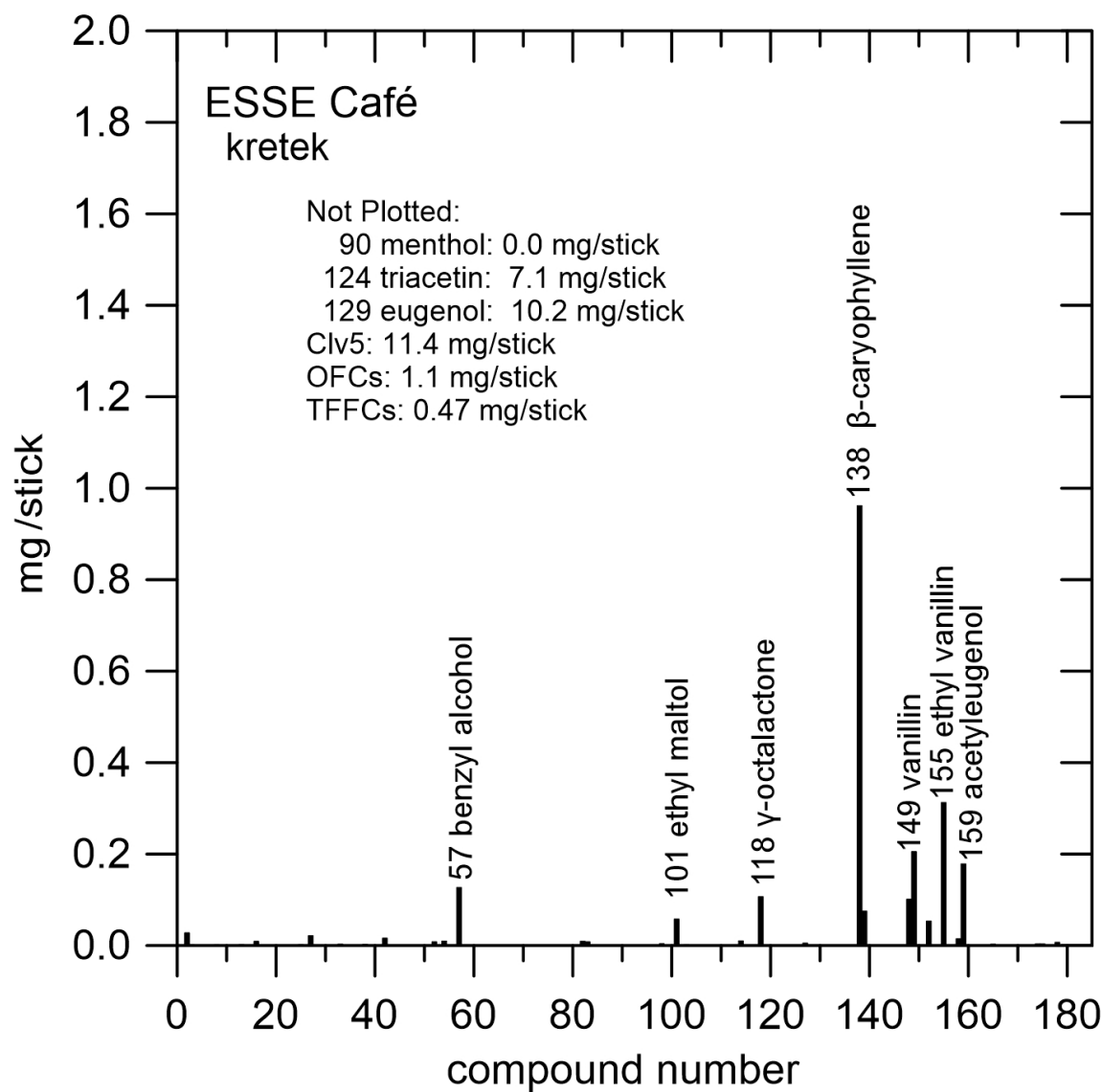


Figure S15.b. ESSE Café (abbreviation: EC) kretek; compound bar plot. OFCs = total flavor chemicals - (Clv5 + menthol + triacetin + triethyl citrate).



Figure S16.a Sampoerna Avolution Slim Menthol (abbreviation: SASM) kretek; pack, opened filter, and un-opened stick.

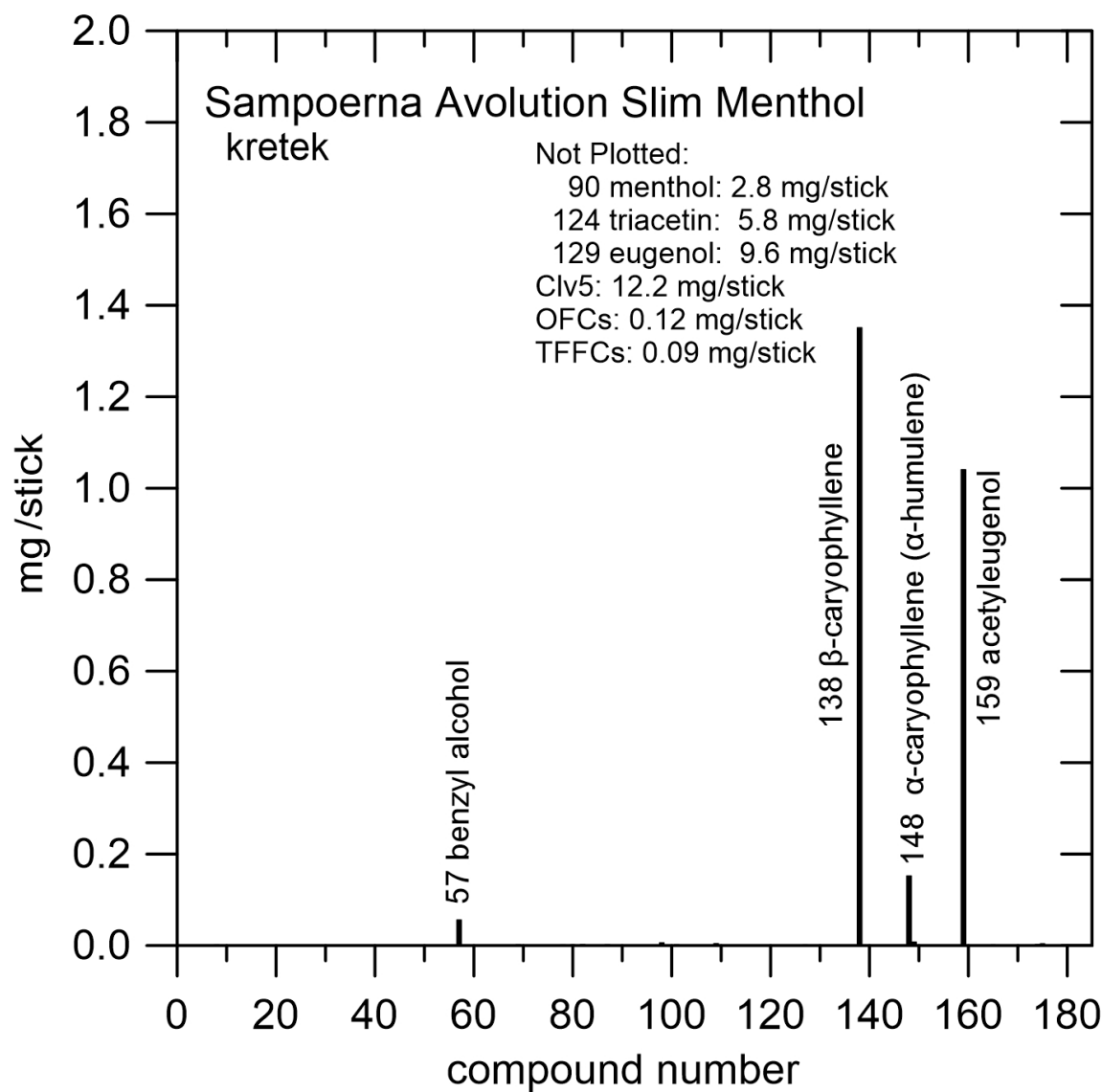


Figure S16.b. Sampoerna Avolution Slim Menthol (abbreviation: SASM) kretek; compound bar plot. OFCs = total flavor chemicals - (Clv5 + menthol + triacetin + triethyl citrate).



Figure S17.a ESSE Change Double (abbreviation: ECD) kretek; pack, opened filter, and un-opened stick.

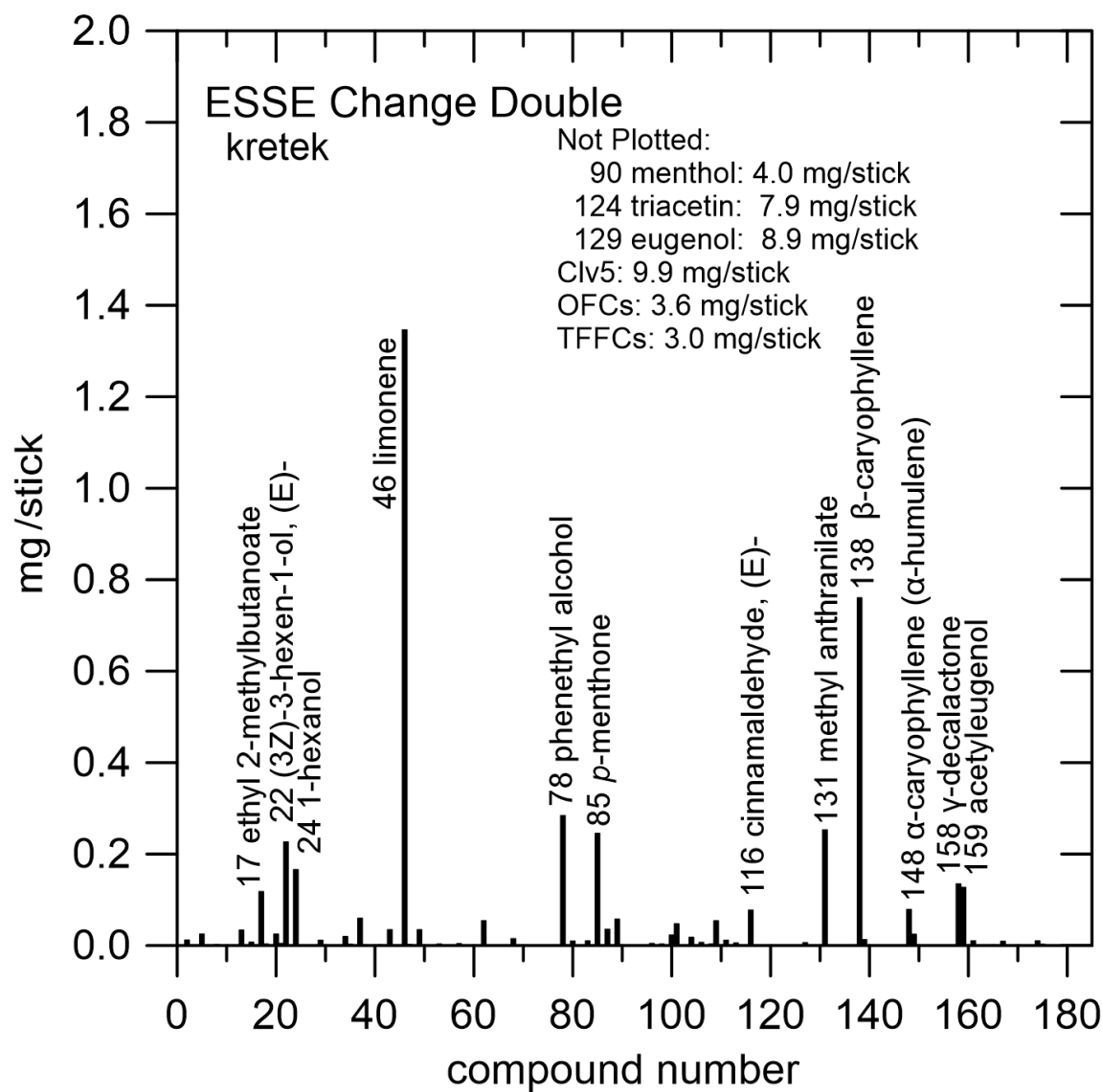


Figure S17.b. ESSE Change Double (abbreviation: ECD) kretek; compound bar plot.

OFCs = total flavor chemicals - (Clv5 + menthol + triacetin + triethyl citrate).



Figure S18.a. Sampoerna A Mild (abbreviation: SAM) kretek; pack, opened filter, and un-opened stick.

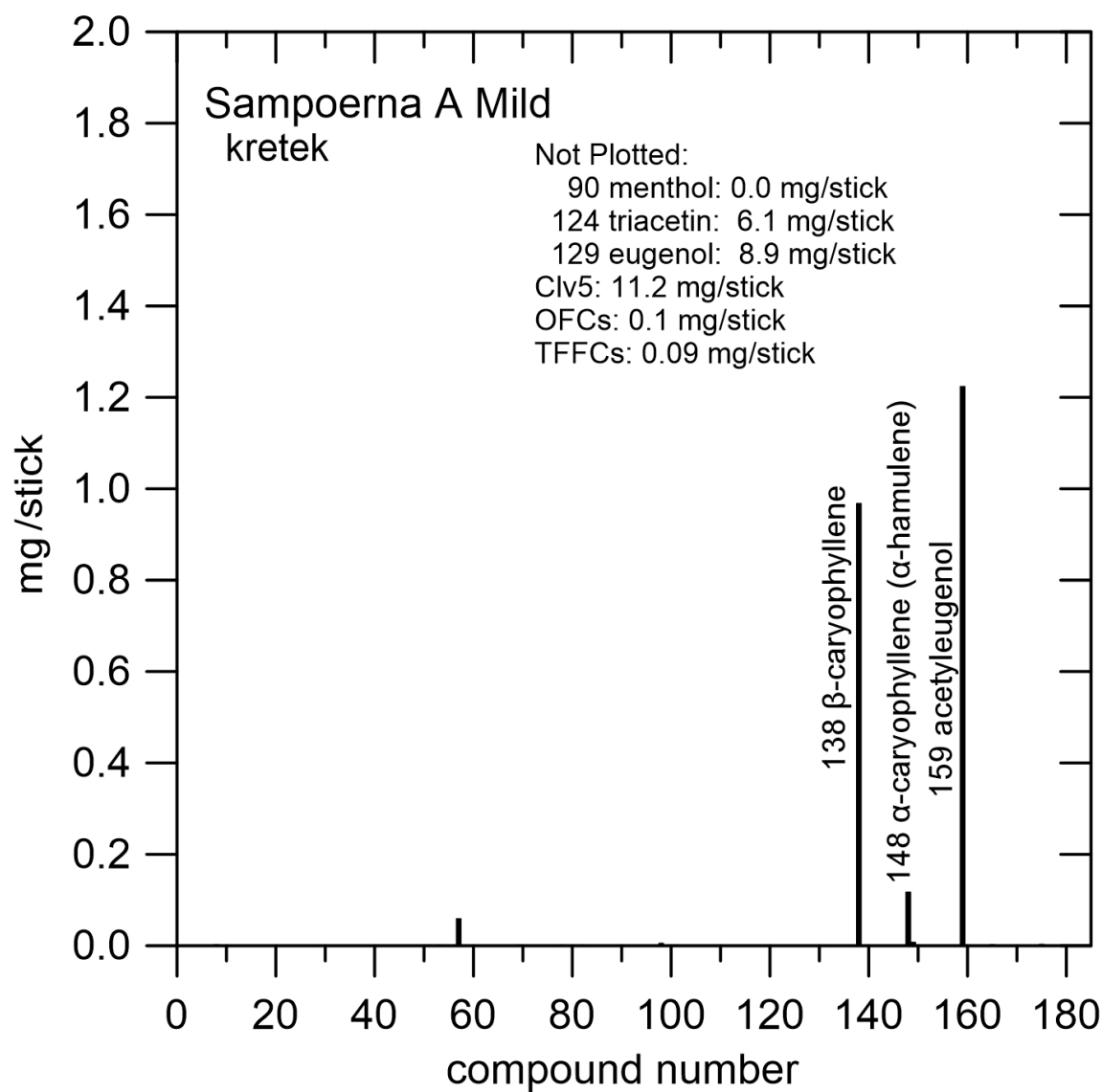


Figure S18.b. Sampoerna A Mild (abbreviation: SAM) kretek; compound bar plot. OFCs = total flavor chemicals - (Clv5 + menthol + triacetin + triethyl citrate).



Figure S19.a. ESSE Change Grape (abbreviation: ECG) kretek; pack, opened filter, and un-opened stick.

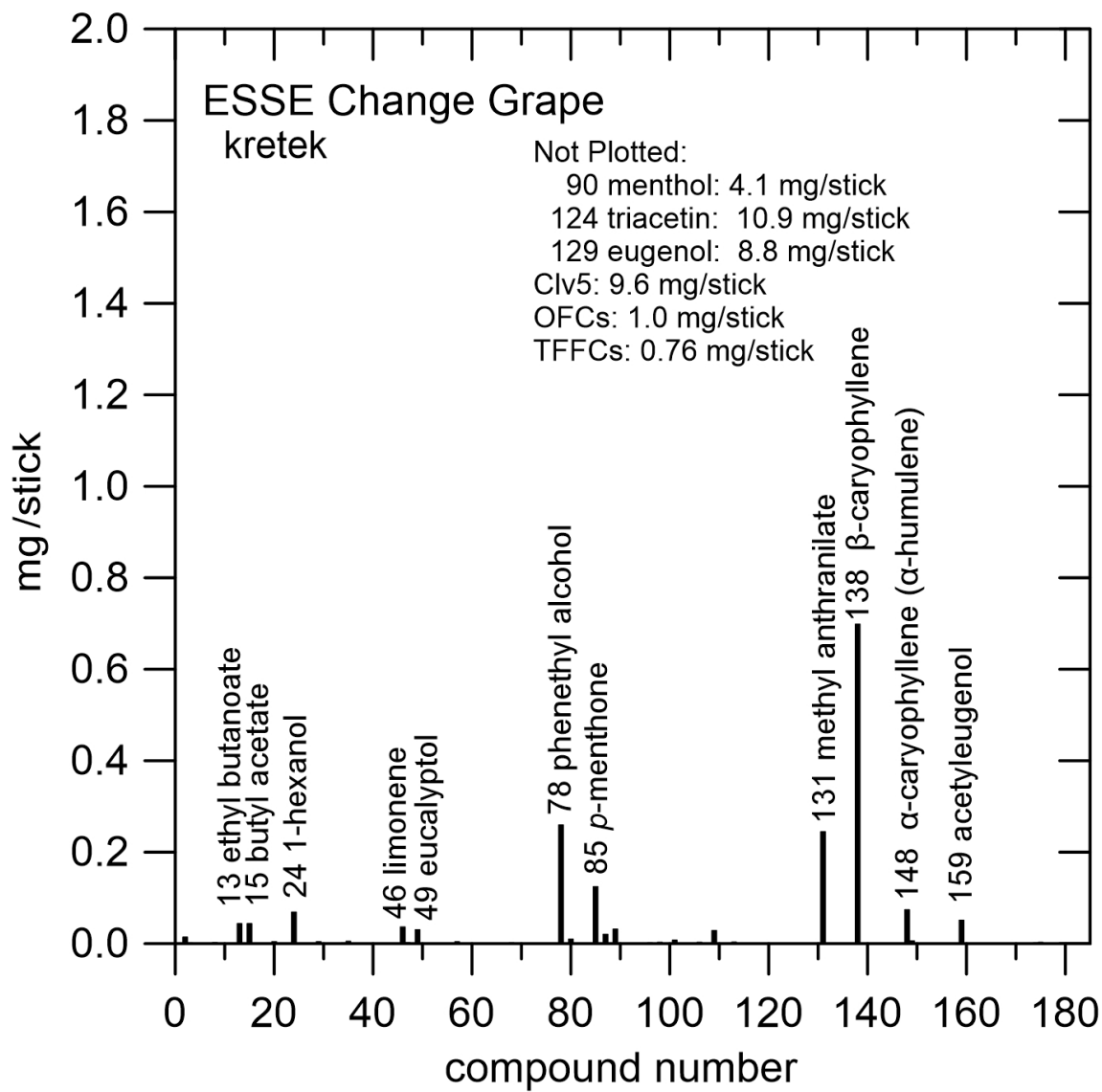


Figure S19.b. ESSE Change Grape (abbreviation: ECG) kretek; compound bar plot. OFCs = total flavor chemicals - (Clv5 + menthol + triacetin + triethyl citrate).



Figure S20.a. Sampoerna Avolution Slim Original (abbreviation: SASO) kretek; pack, opened filter, and un-opened stick.

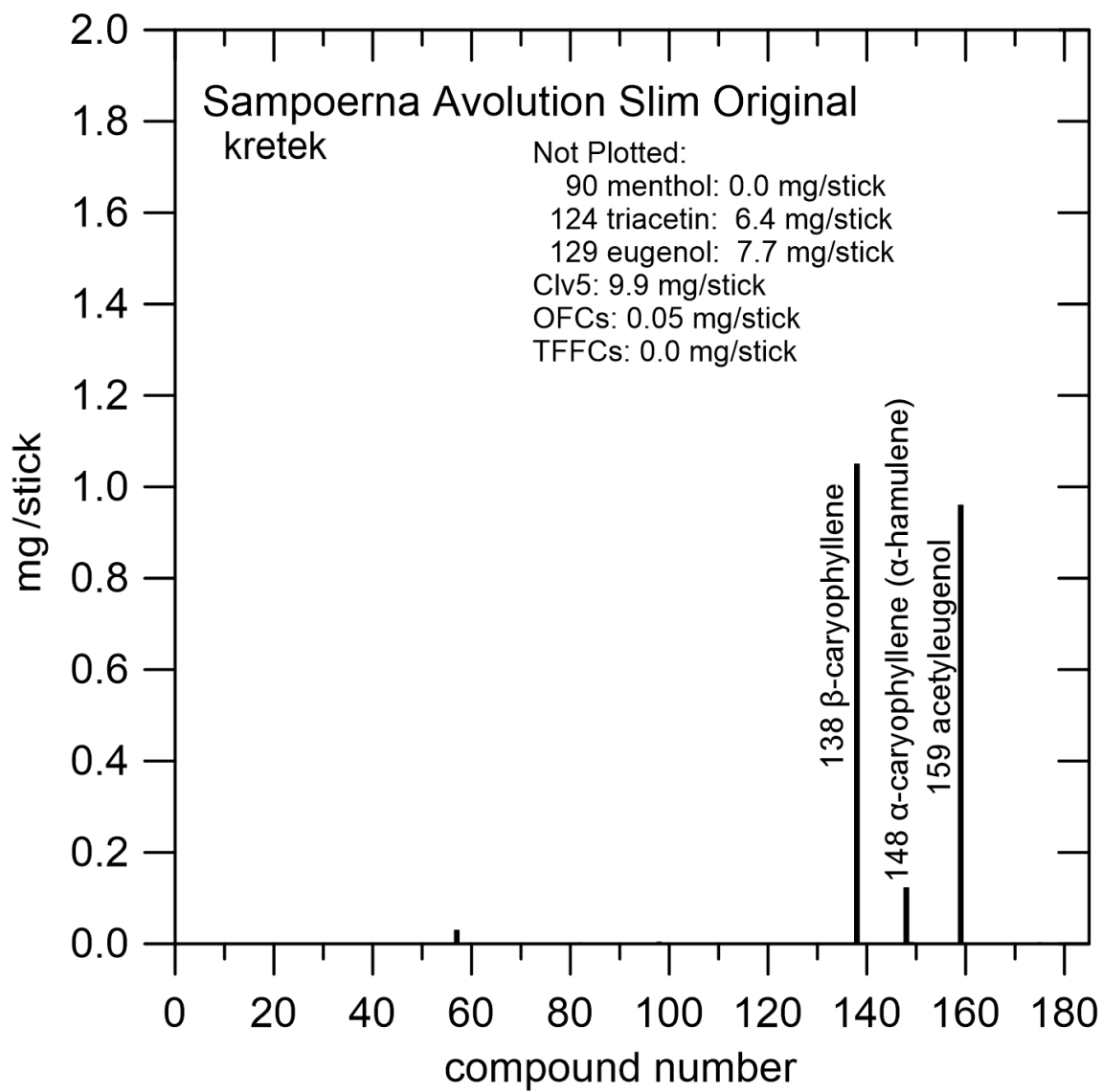


Figure S20.b. Sampoerna Avolution Slim Original (abbreviation: SASO) kretek; compound bar plot. OFCs = total flavor chemicals - (Clv5 + menthol + triacetin + triethyl citrate).



Figure S21.a. ESSE Change Applemint Capsule (abbreviation: ECAC) kretek; pack, opened filter, and un-opened stick.

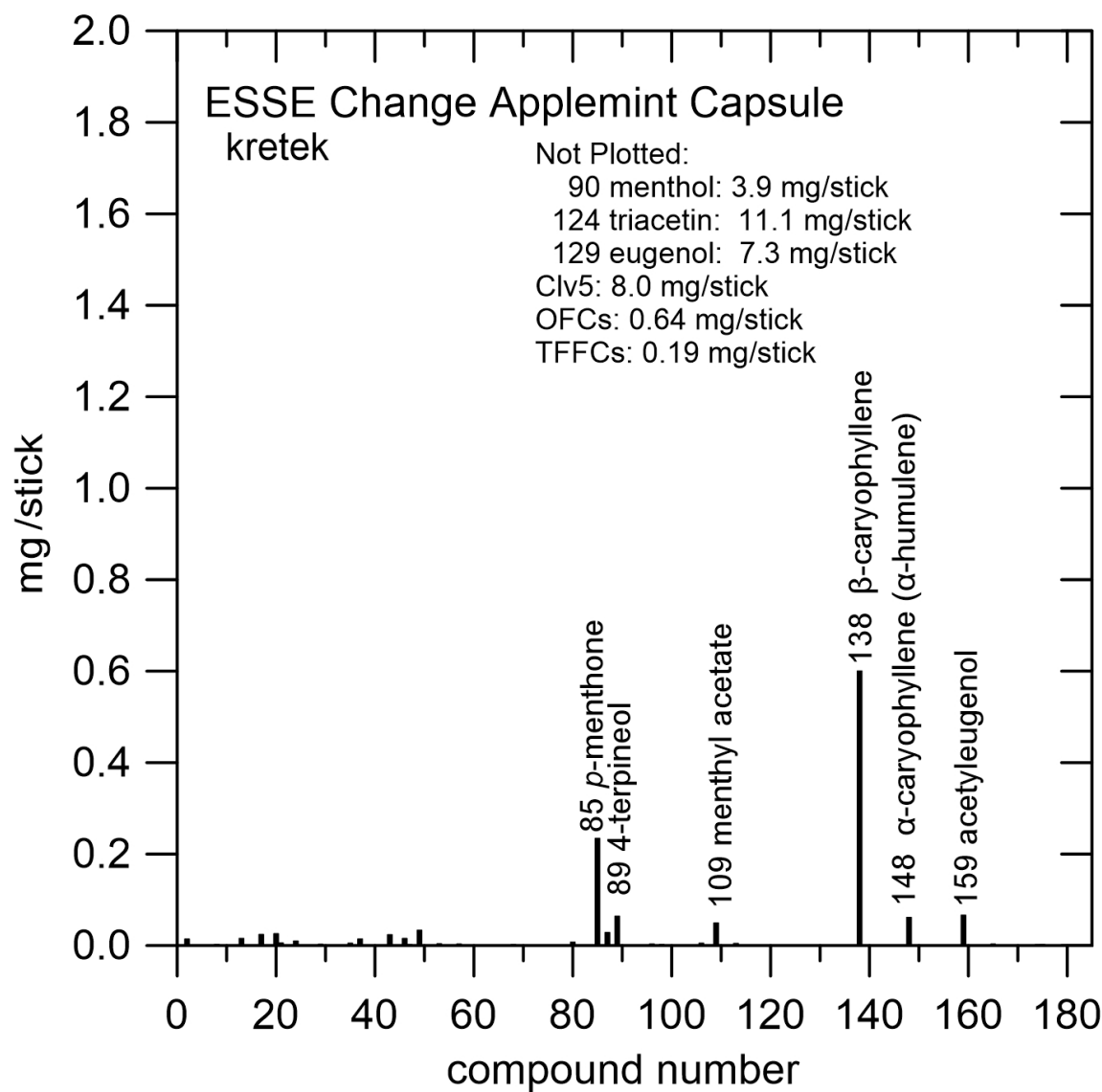


Figure S21.b. ESSE Change Applemint Capsule (abbreviation: ECAC) kretek; compound bar plot. OFCs = total flavor chemicals - (Clv5 + menthol + triacetin + triethyl citrate).



Figure S22.a. Sampoerna A Splash Tropical (abbreviation: SAST) kretek; pack, opened filter, and un-opened stick.

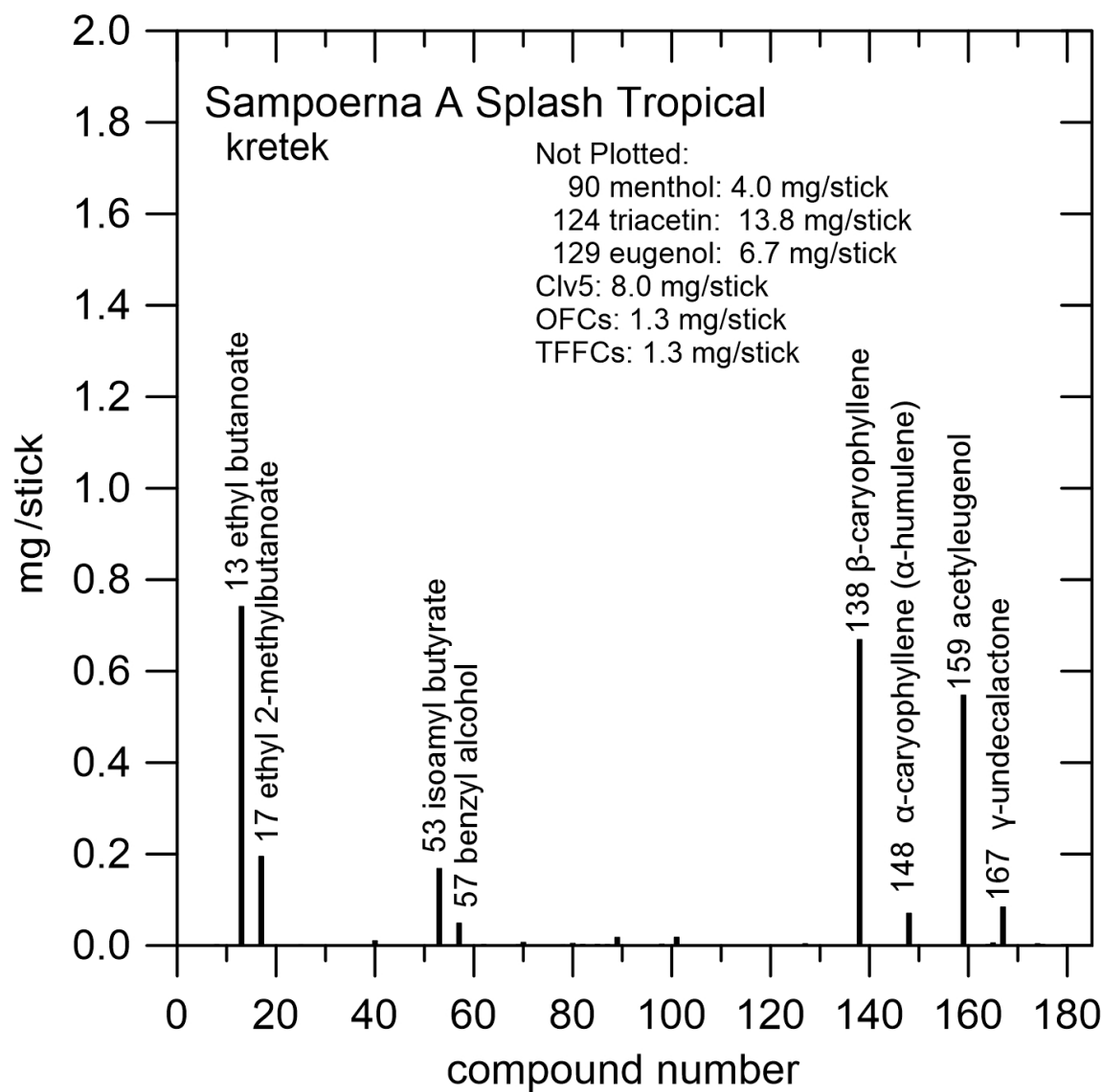


Figure S22.b. Sampoerna A Splash Tropical (abbreviation: SAST) kretek; compound bar plot. OFCs = total flavor chemicals - (Clv5 + menthol + triacetin + triethyl citrate).



Figure S23.a. Sampoerna A Splash Sunny (abbreviation: SASS) kretek; pack, opened filter, and un-opened stick.

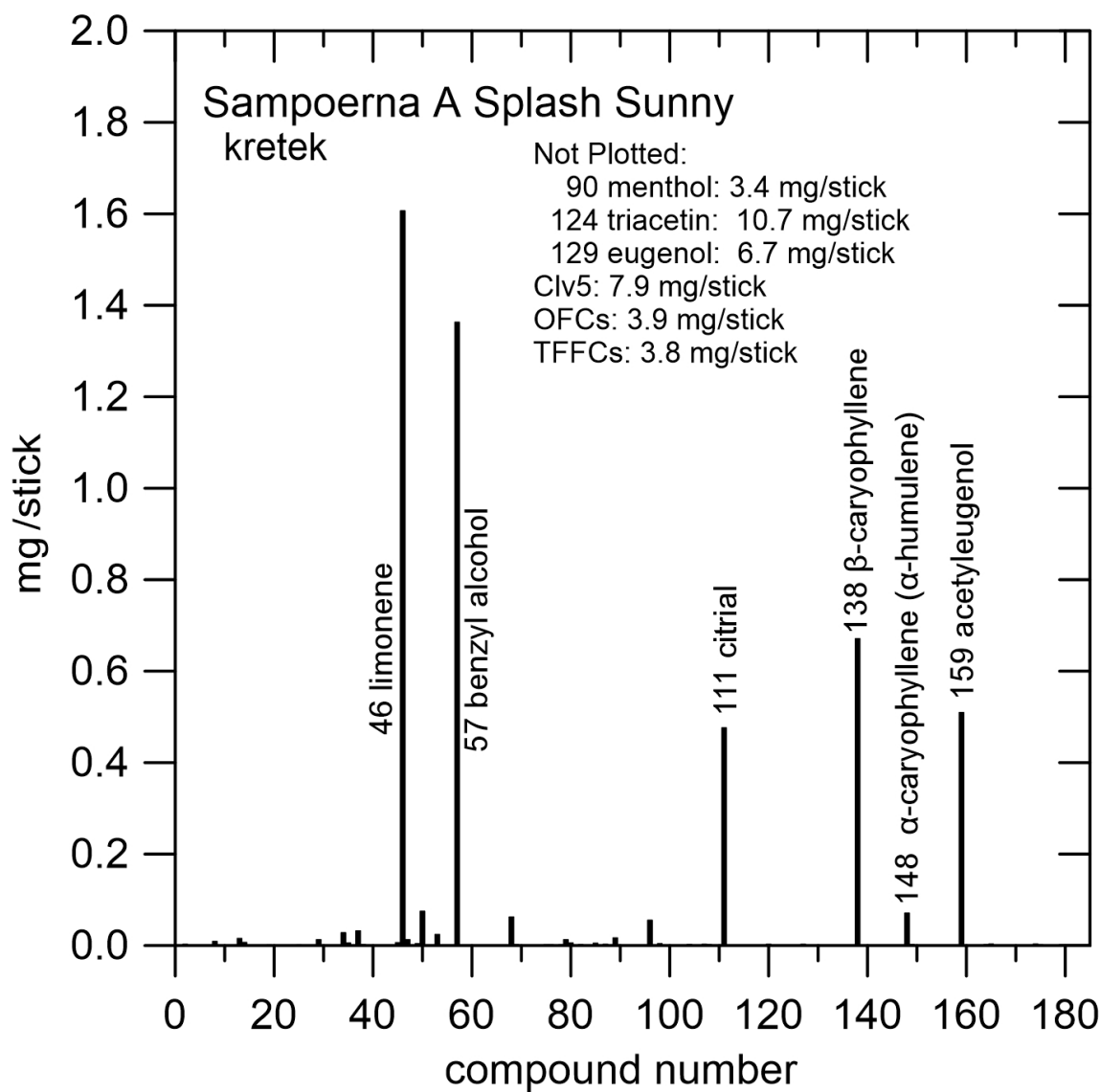


Figure S23.b. Sampoerna A Splash Sunny (abbreviation: SASS) kretek; compound bar plot. OFCs = total flavor chemicals - (Clv5 + menthol + triacetin + triethyl citrate).



Figure S24.a. Marlboro 12's Advance (abbreviation: MA) kretek; pack, opened filter, and un-opened stick.

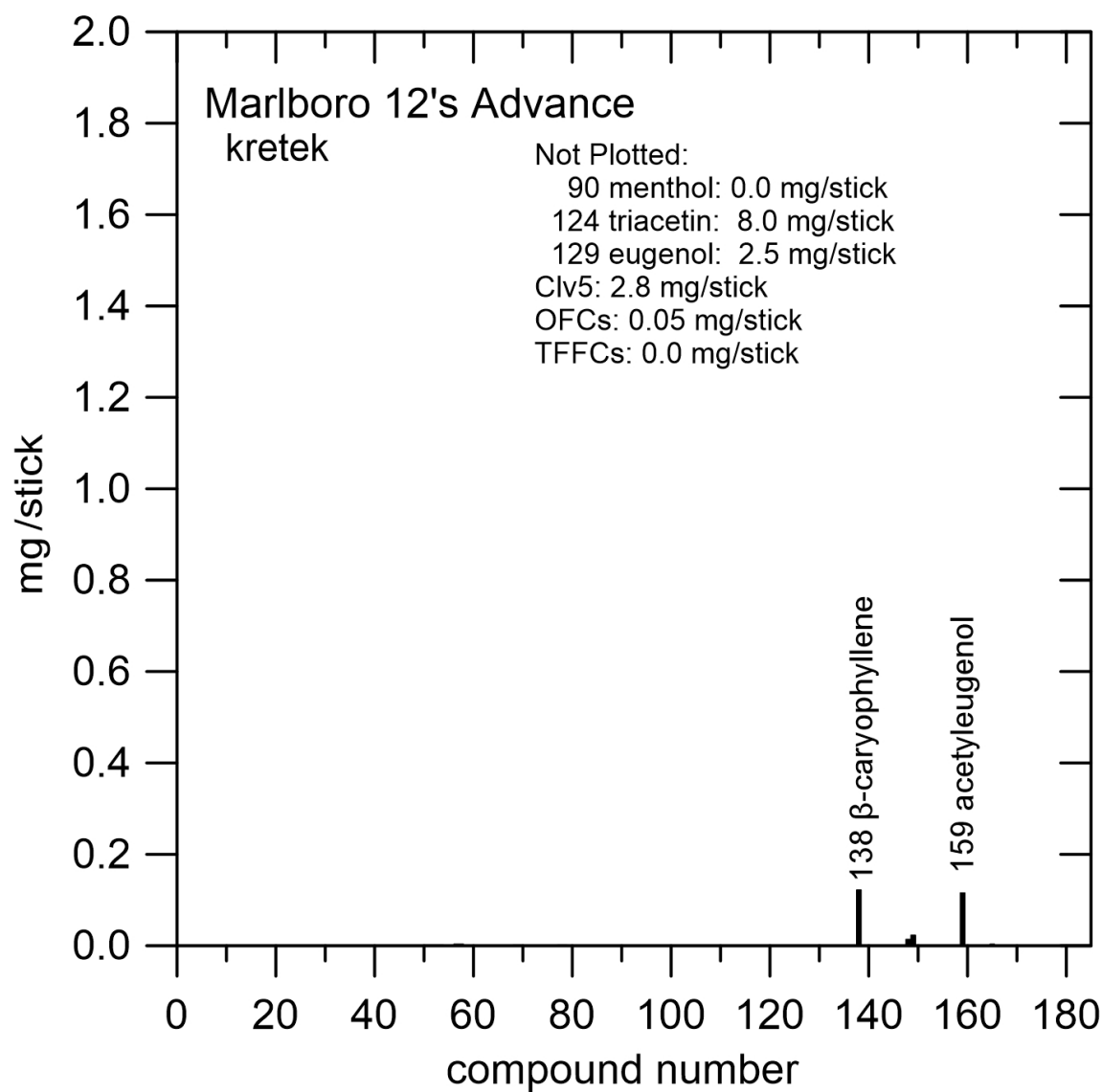


Figure S24.b. Marlboro 12's Advance (abbreviation: MA) kretek; compound bar plot.
OFCs = total flavor chemicals - (Clv5 + menthol + triacetin + triethyl citrate).



Figure S25.a. Marlboro Ice Burst (abbreviation: MIB) cigarette; pack, opened filter, and un-opened stick.

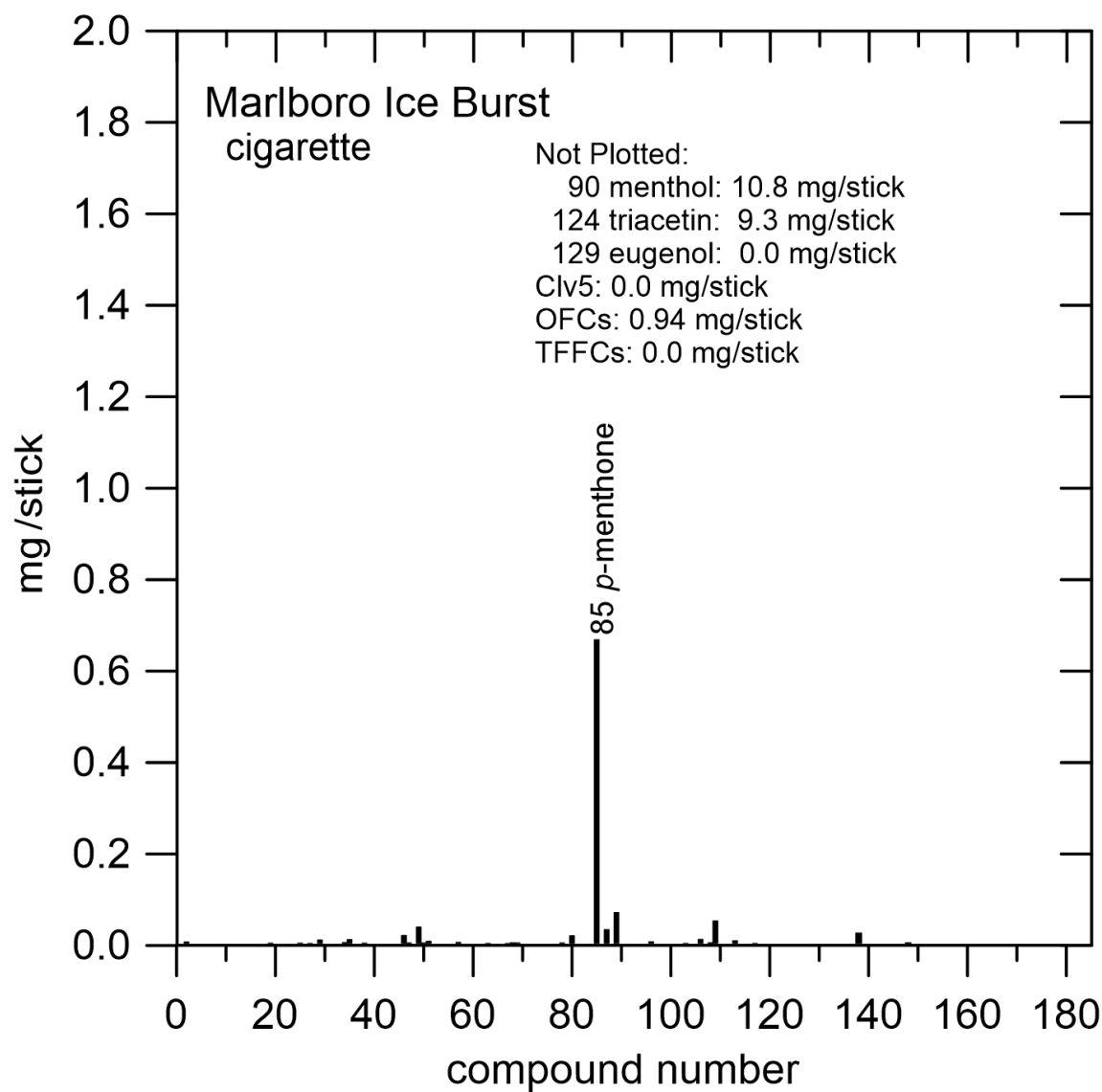


Figure S25.b. Marlboro Ice Burst (abbreviation: MIB) cigarette; compound bar plot.
OFCs = total flavor chemicals - (Clv5 + menthol + triacetin + triethyl citrate).



Figure S26.a. Camel Activate Purple Mint (abbreviation: CAPM) cigarette; pack, opened filter, and un-opened stick.

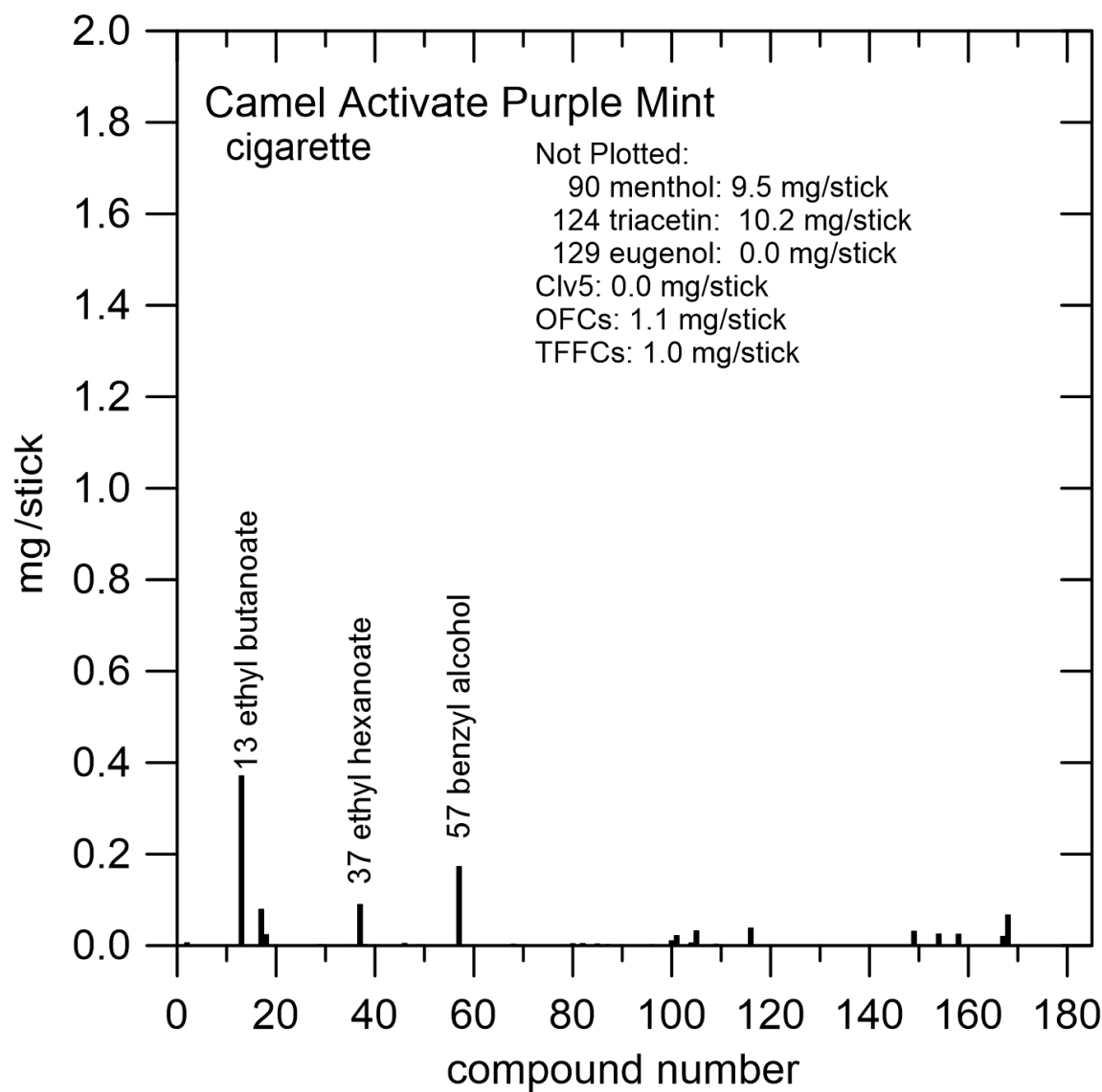


Figure S26.b. Camel Activate Purple Mint (abbreviation: CAPM) cigarette; compound bar plot. OFCs = total flavor chemicals - (Clv5 + menthol + triacetin + triethyl citrate).



Figure S27.a. Lucky Strike Cool Switch (abbreviation: LSCS) cigarette; pack, opened filter, and un-opened stick.

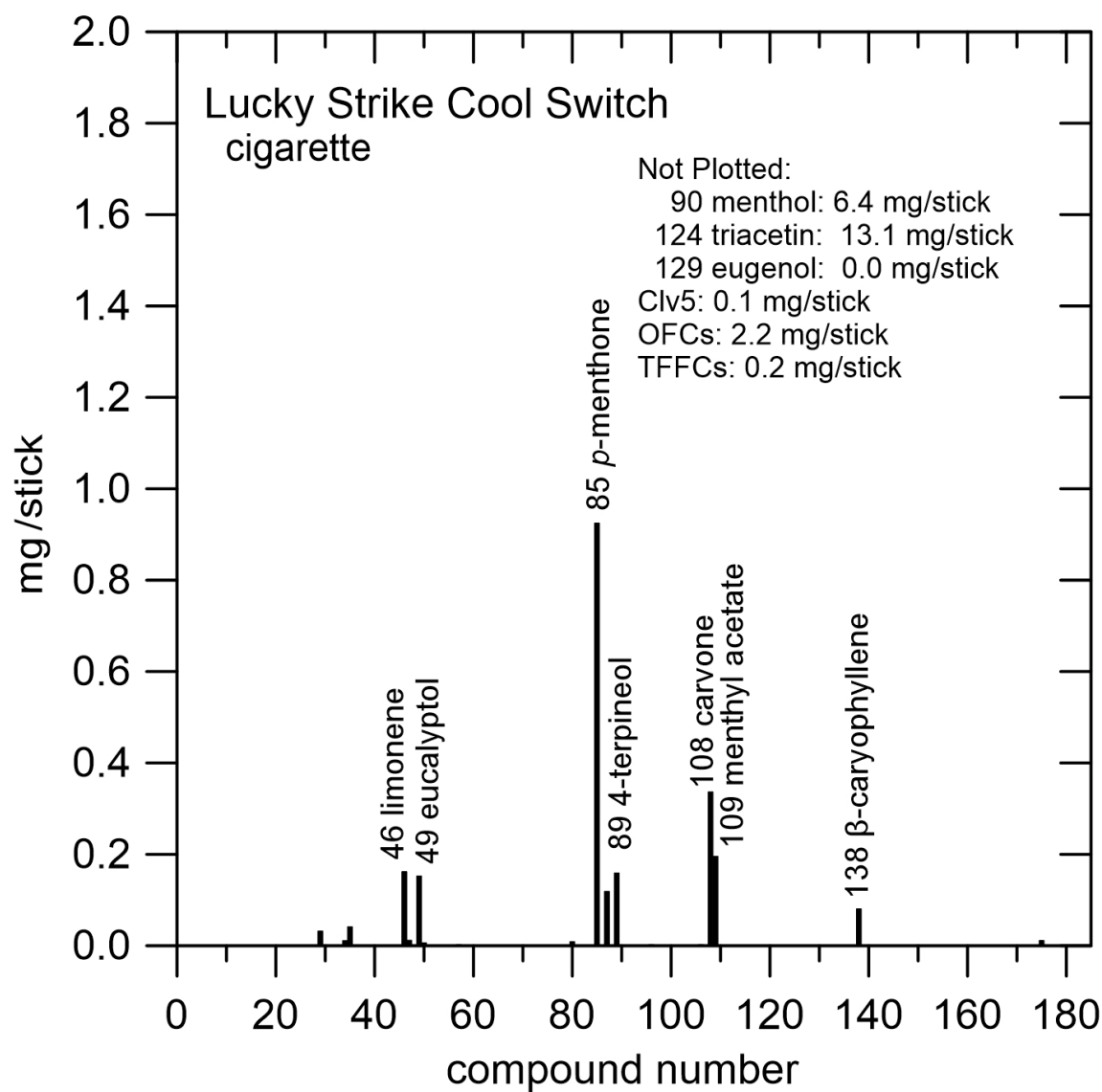


Figure S27.b. Lucky Strike Cool Switch (abbreviation: LSCS) cigarette; compound bar plot. OFCs = total flavor chemicals - (Clv5 + menthol + triacetin + triethyl citrate).



Figure S28.a. Forte Extra Breeze Menthol (abbreviation: FEBM) cigarette; pack, opened filter, and un-opened stick.

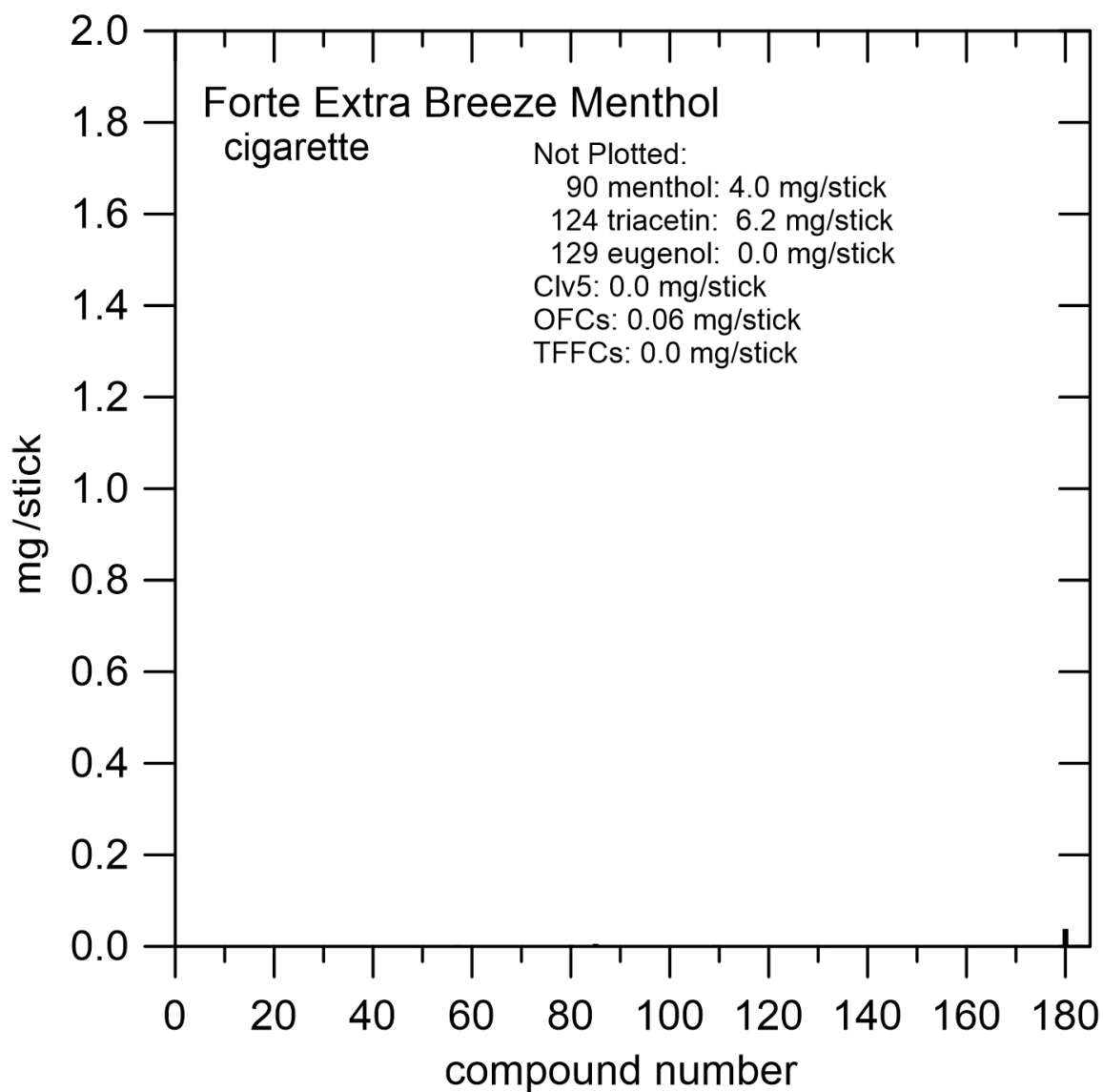


Figure S28.b. Forte Extra Breeze Menthol (abbreviation: FEBM) cigarette; compound bar plot. OFCs = total flavor chemicals - (Clv5 + menthol + triacetin + triethyl citrate).



Figure S29.a. Forte Menthol (abbreviation: FM) cigarette; pack, opened filter, and unopened stick.

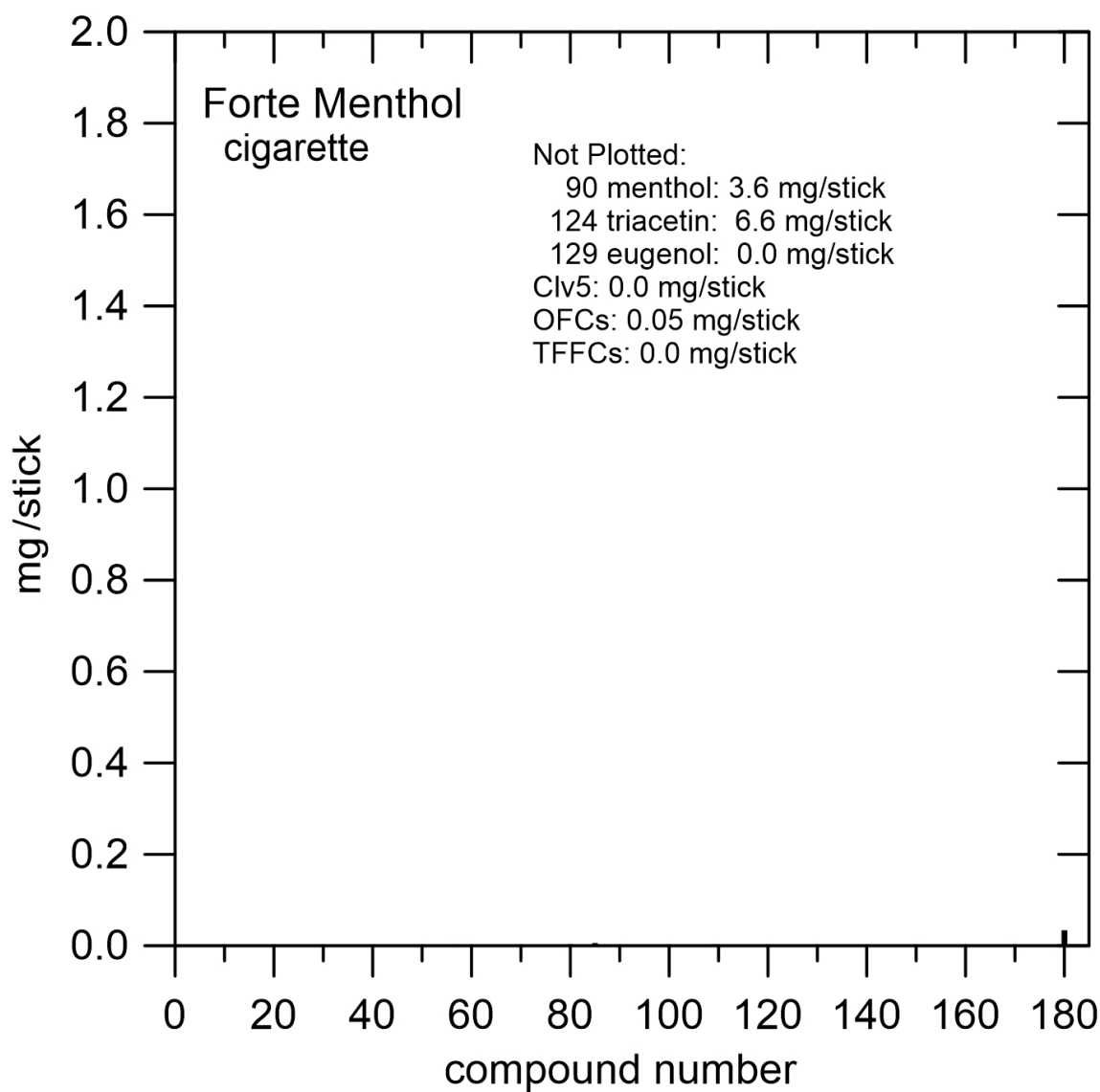


Figure S29.b. Forte Menthol (abbreviation: FM) cigarette; compound bar plot. OFCs = total flavor chemicals - (Clv5 + menthol + triacetin + triethyl citrate).



Figure S30.a. ESSE Golden Leaf (abbreviation: EGL) cigarette; pack, opened filter, and un-opened stick.

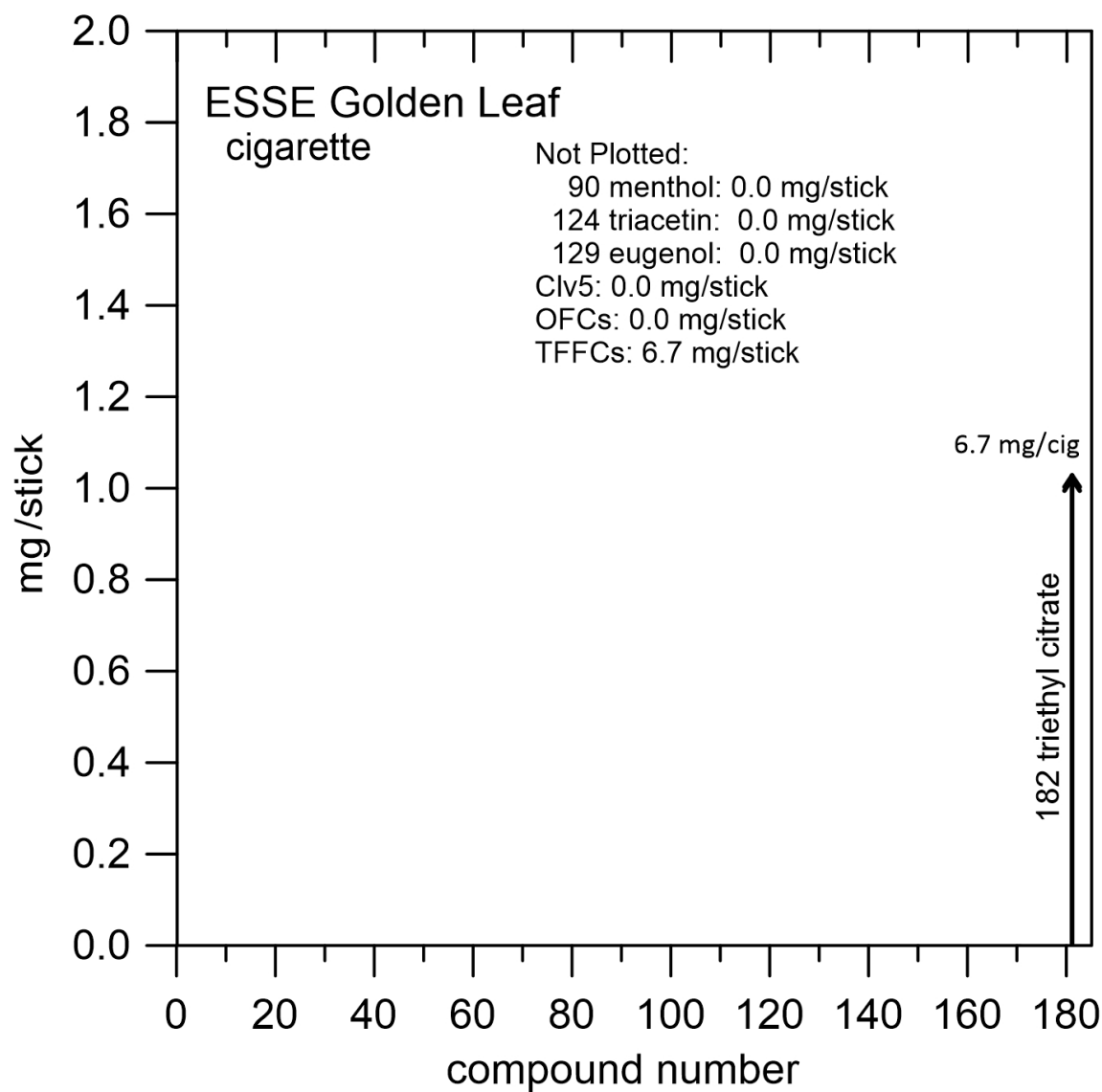


Figure S30.b. ESSE Golden Leaf (abbreviation: EGL) cigarette; compound bar plot. OFCs = total flavor chemicals - (Clv5 + menthol + triacetin + triethyl citrate).



Figure S31.a. Marlboro Gold Lights (abbreviation: MGL) cigarette; pack, opened filter, and un-opened stick.

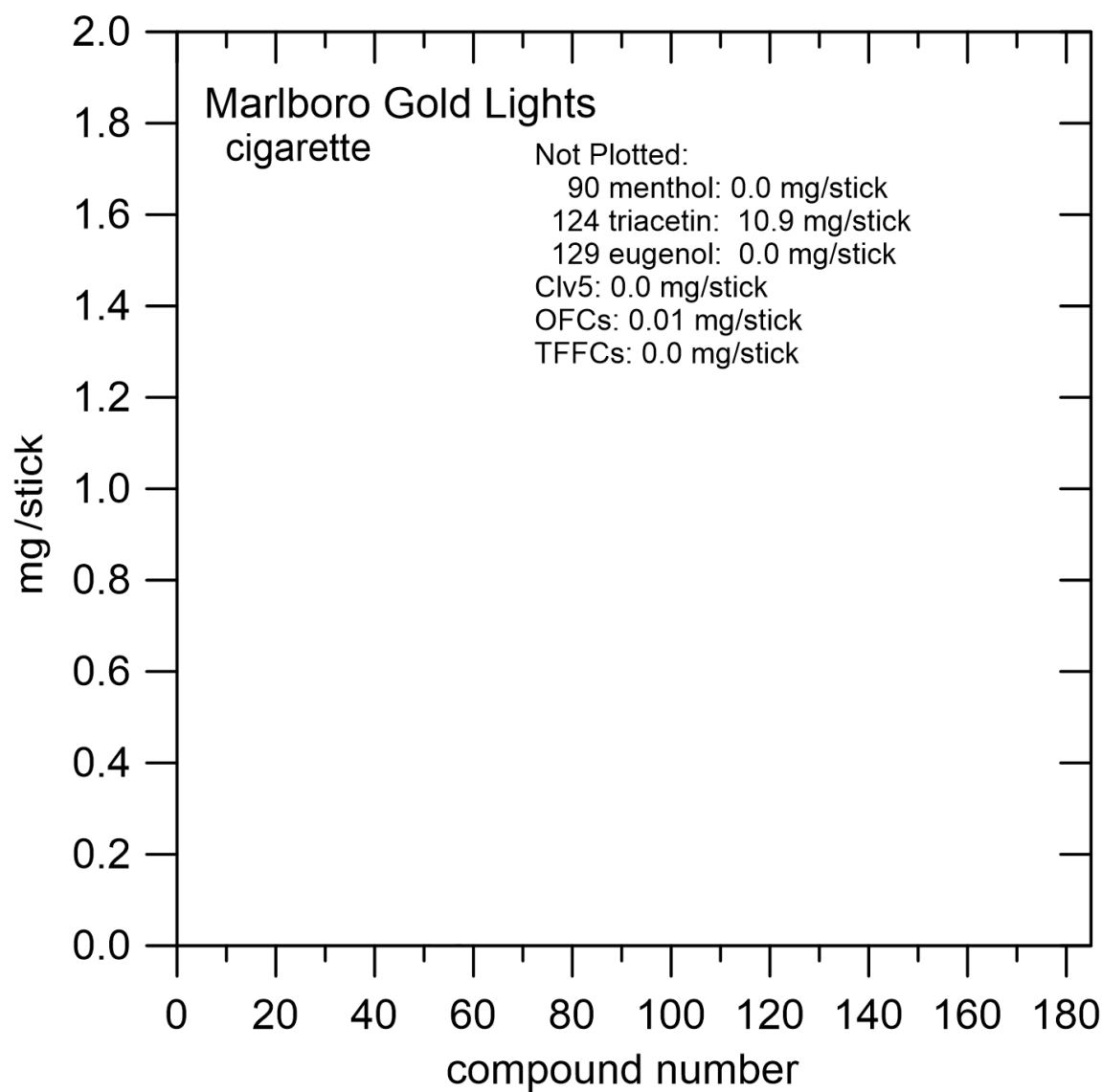


Figure S31.b. Marlboro Gold Lights (abbreviation: MGL) cigarette; compound bar plot.
OFCs = total flavor chemicals - (Clv5 + menthol + triacetin + triethyl citrate).



Figure S32.a. Marlboro Reds (Indonesia) (abbreviation: MRI) cigarette; pack, opened filter, and un-opened stick.

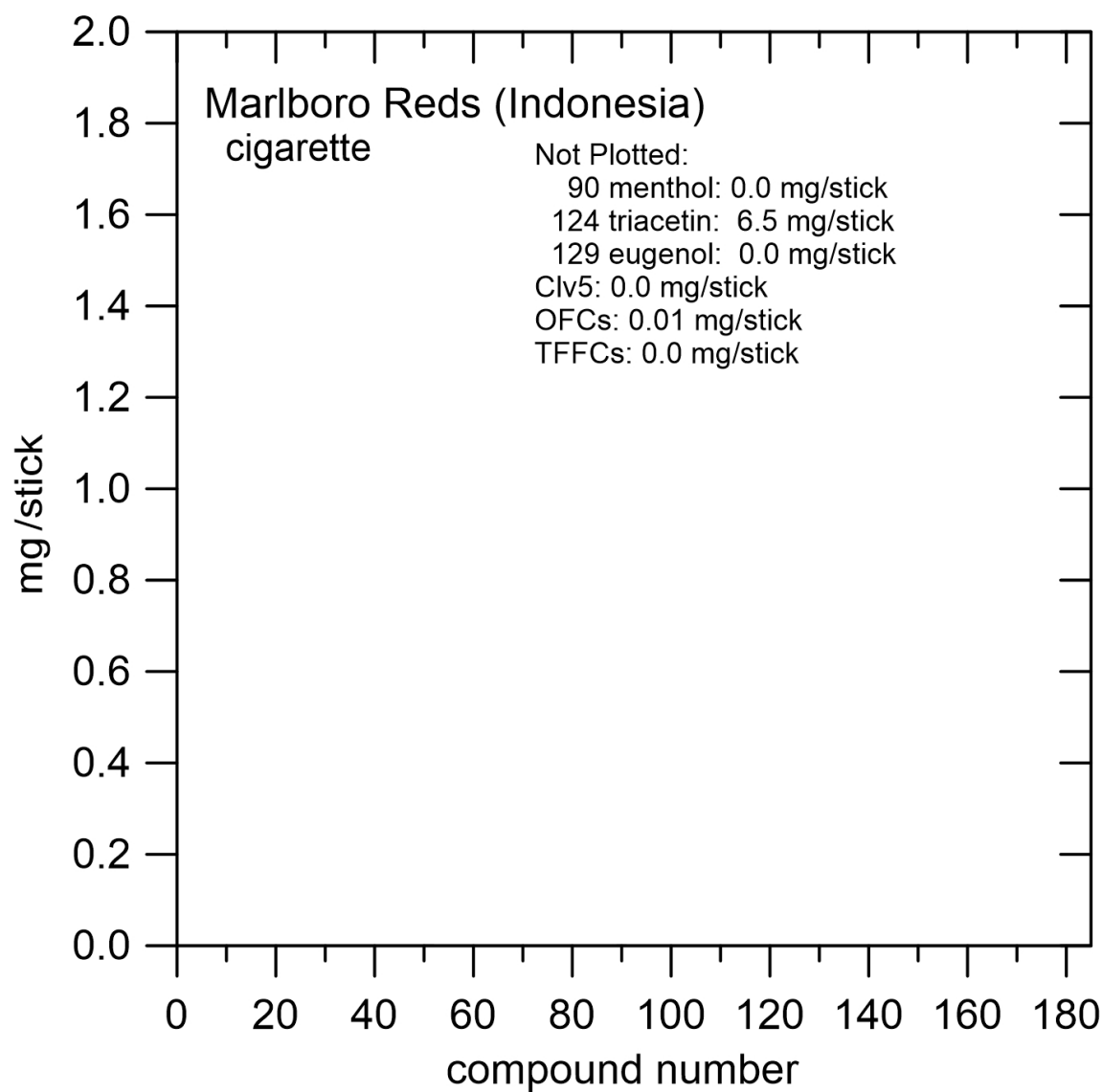


Figure S32.b. Marlboro Reds (Indonesia) (abbreviation: MRI) cigarette; compound bar plot. OFCs = total flavor chemicals - (Clv5 + menthol + triacetin + triethyl citrate).



Figure S33.a. Forte Extra Breeze (abbreviation: FEB) cigarette; pack, opened filter, and un-opened stick.

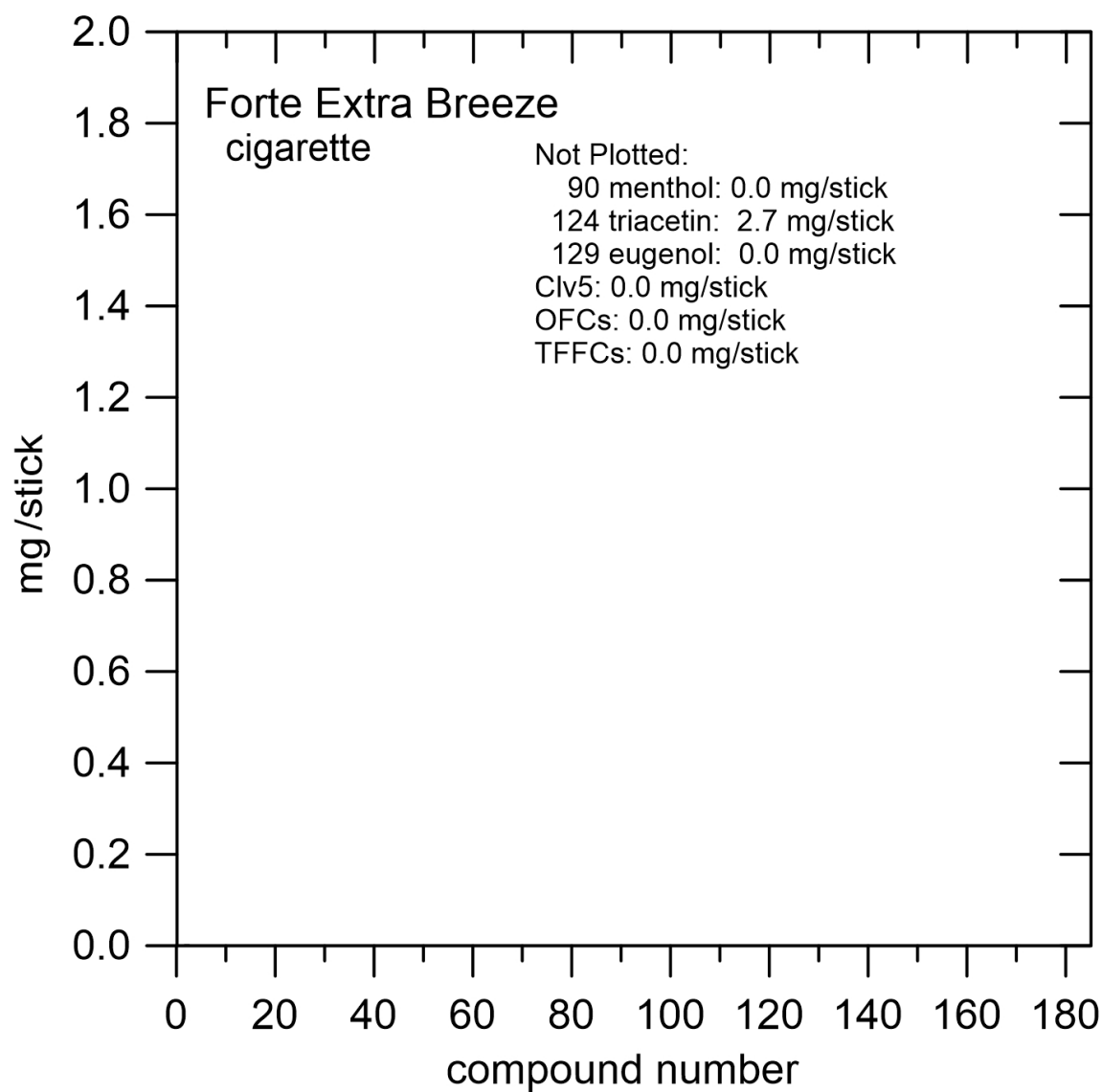


Figure S33.b. Forte Extra Breeze (abbreviation: FEB) cigarette; compound bar plot.
OFCs = total flavor chemicals - (Clv5 + menthol + triacetin + triethyl citrate).



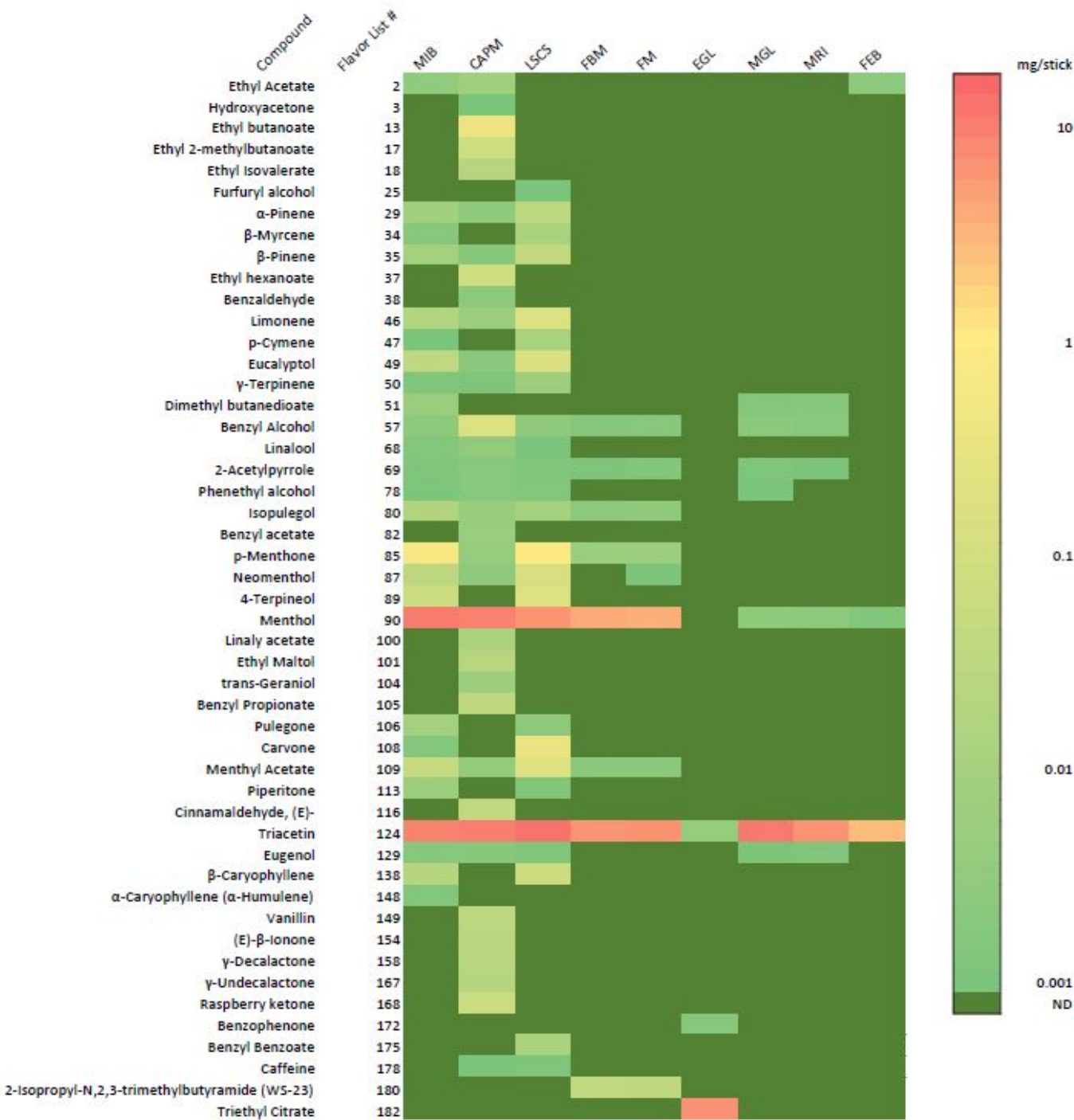


Figure S35. Flavour chemical heat map for cigarettes.

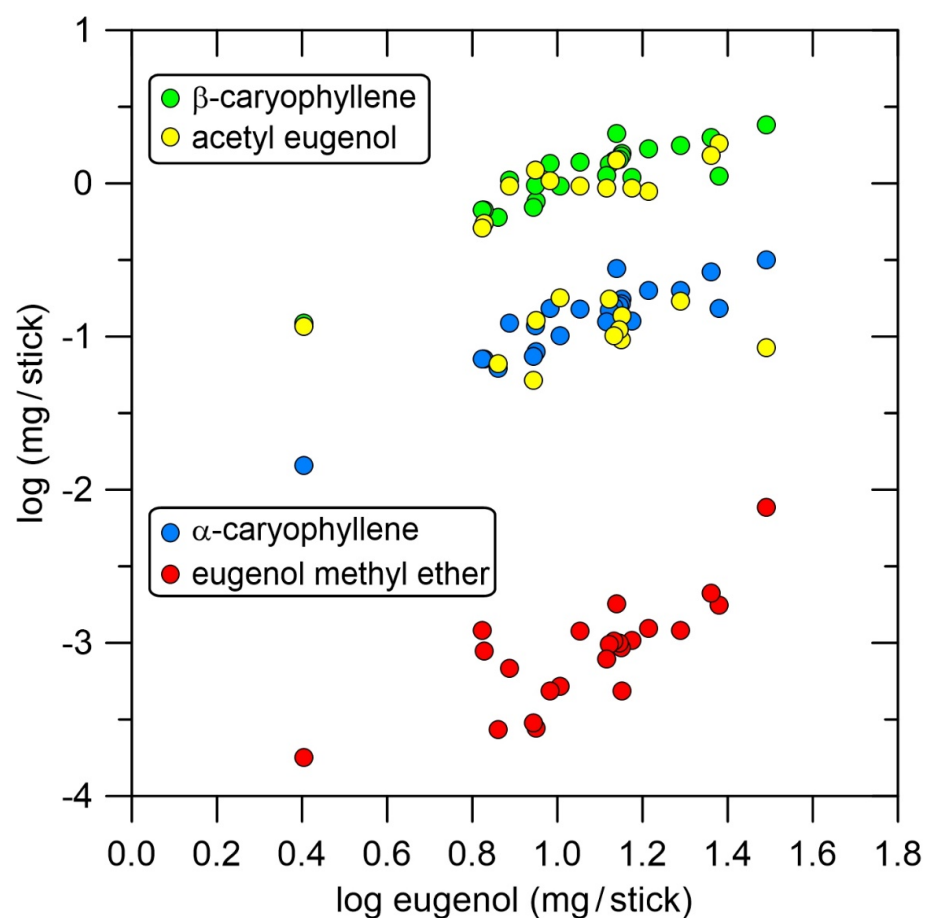


Figure S36. Flavour chemical levels (mg/stick) for four clove related compounds relative to eugenol in 24 Indonesian kreteks. The levels of acetyl eugenol suggest that two different sources of clove products were used with two different typical mass fraction ratios for acetyl eugenol relative to eugenol.